

1938

The Lion 1938

Langston University

Follow this and additional works at: http://dclu.langston.edu/archives_yearbooks_pre1960

Recommended Citation

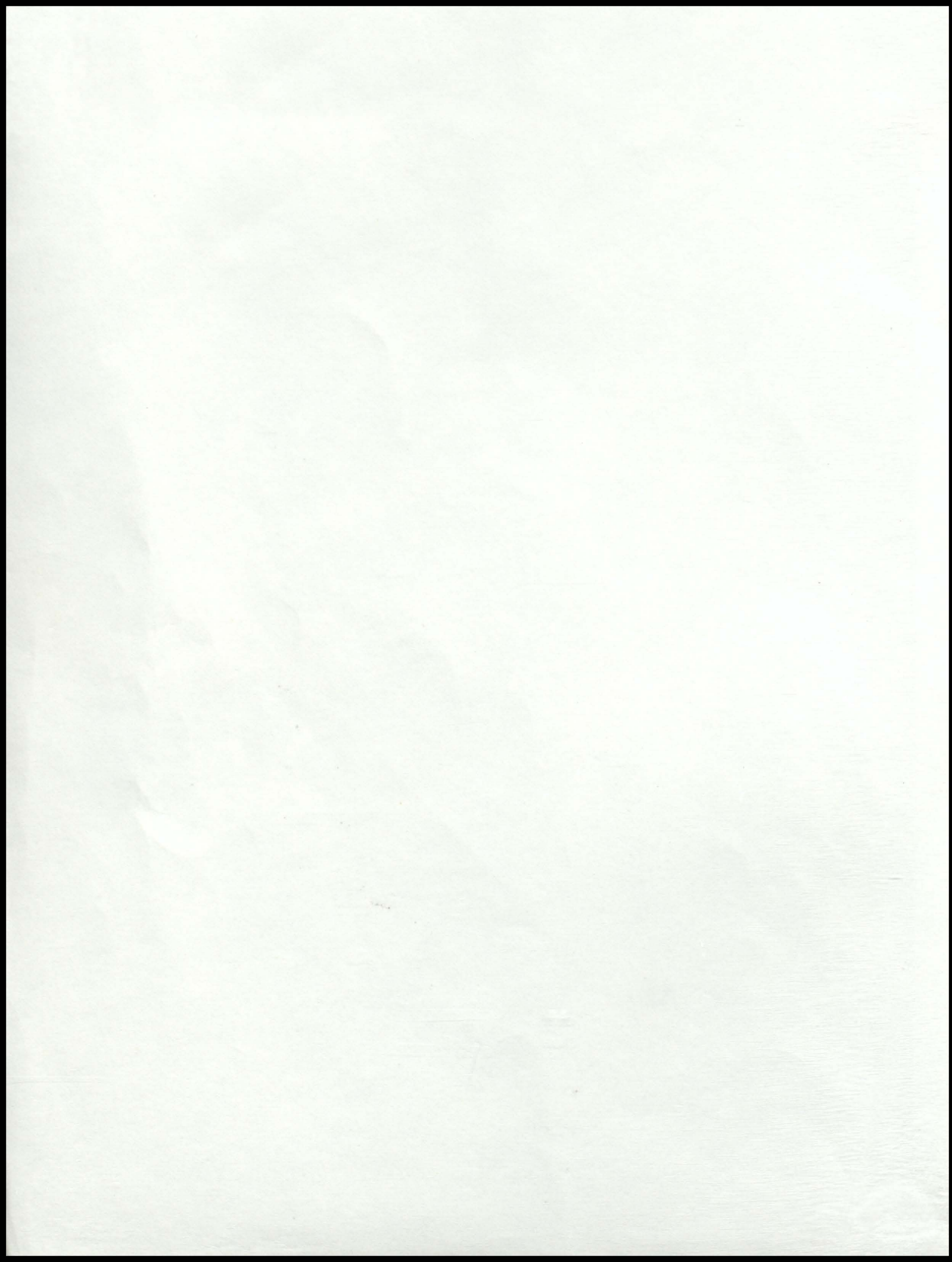
Langston University, "The Lion 1938" (1938). *LU Yearbooks, Pre-1960*. Book 4.
http://dclu.langston.edu/archives_yearbooks_pre1960/4

This Book is brought to you for free and open access by the LU Yearbooks at Digital Commons @ Langston University. It has been accepted for inclusion in LU Yearbooks, Pre-1960 by an authorized administrator of Digital Commons @ Langston University. For more information, please contact jblewis@langston.edu.

the
1938

LION





THE LION

1937-38



PUBLISHED BY
THE STUDENTS OF LANGSTON UNIVERSITY
LANGSTON, OKLAHOMA

FOREWORD

*Time goes fleeing by —
Life goes fleeing by —
Friends come — friends go —
Only memories remain.*



*I*T IS THE HOPE of the staff members for this book to be a constant friend and companion; a constant reminder of pleasant days spent at this University; and to recall old friends and acquaintances who have followed paths which have led them far apart.

To help instill those memories of the dear days spent in the many channels of our College Life and to help imprint on the minds of our many followers the worth and joy of college life — we do present this publication of "The Lion".

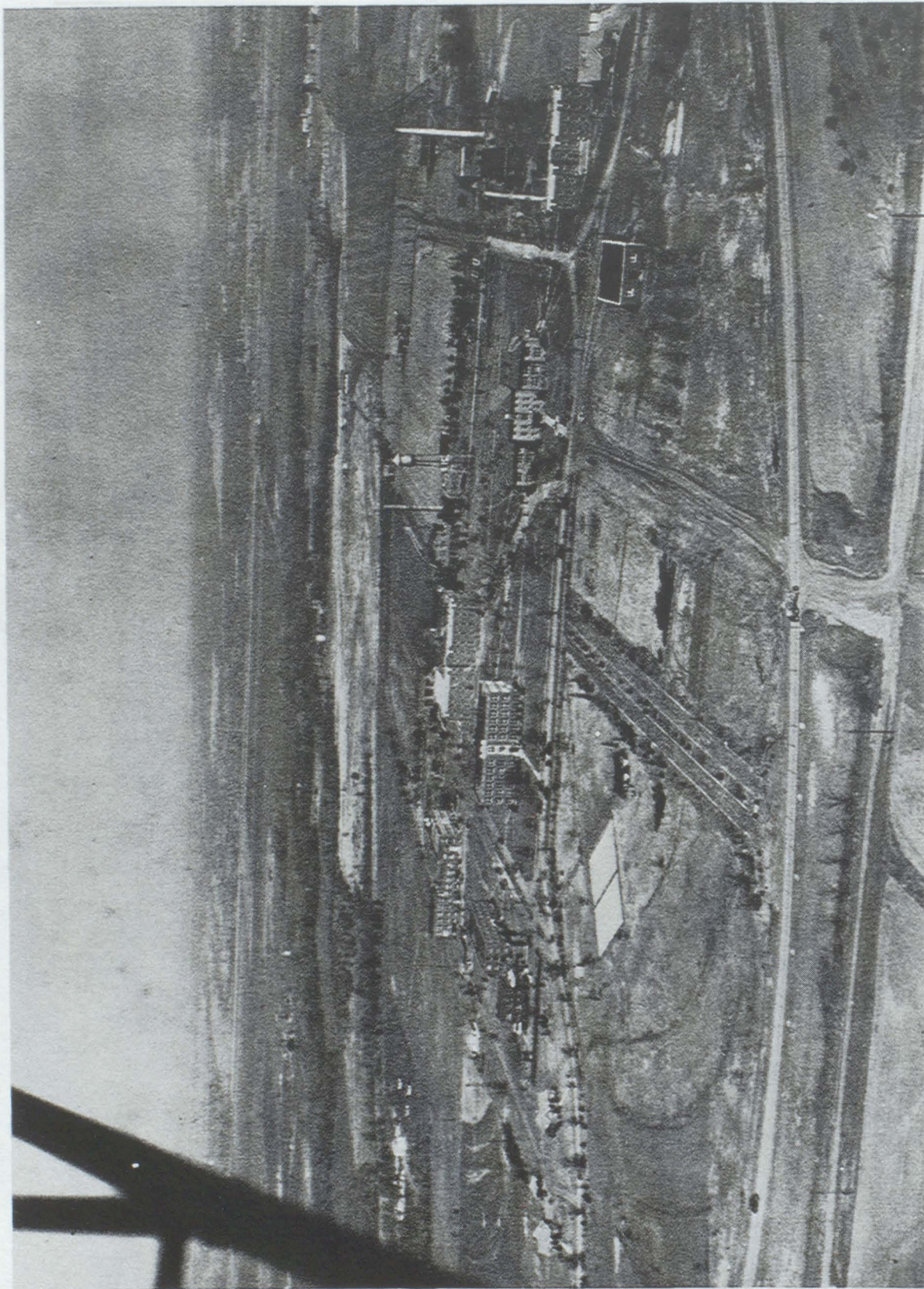
DEDICATION

In sincere appreciation of the sacrificial efforts on the part of the thousands of parents who make this institution possible—

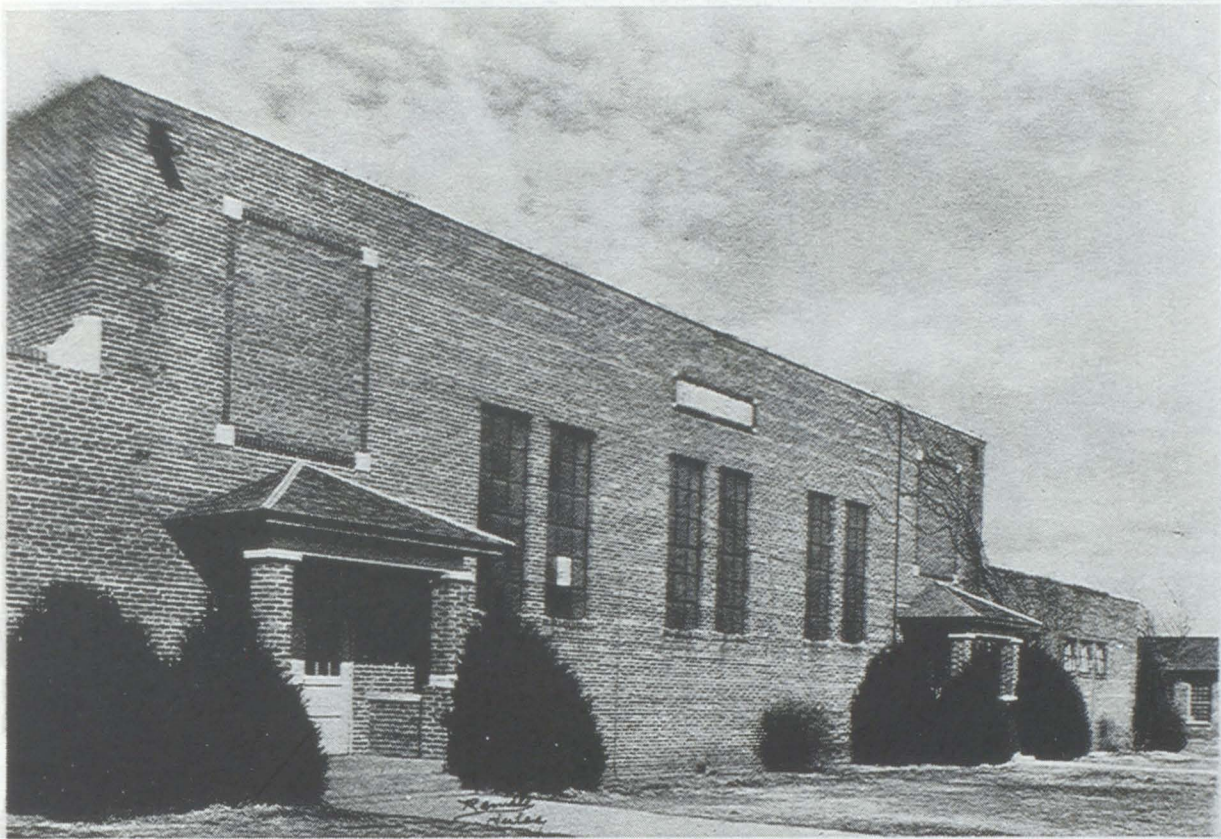
To our beloved President who by his exemplary life and desire for higher ideals makes his character worthy of emulation—

To the many persons who with their minor contributions have aided in no small manner the issuance of this publication—

WE DEDICATE
THE 1938 EDITION OF
"THE LION"



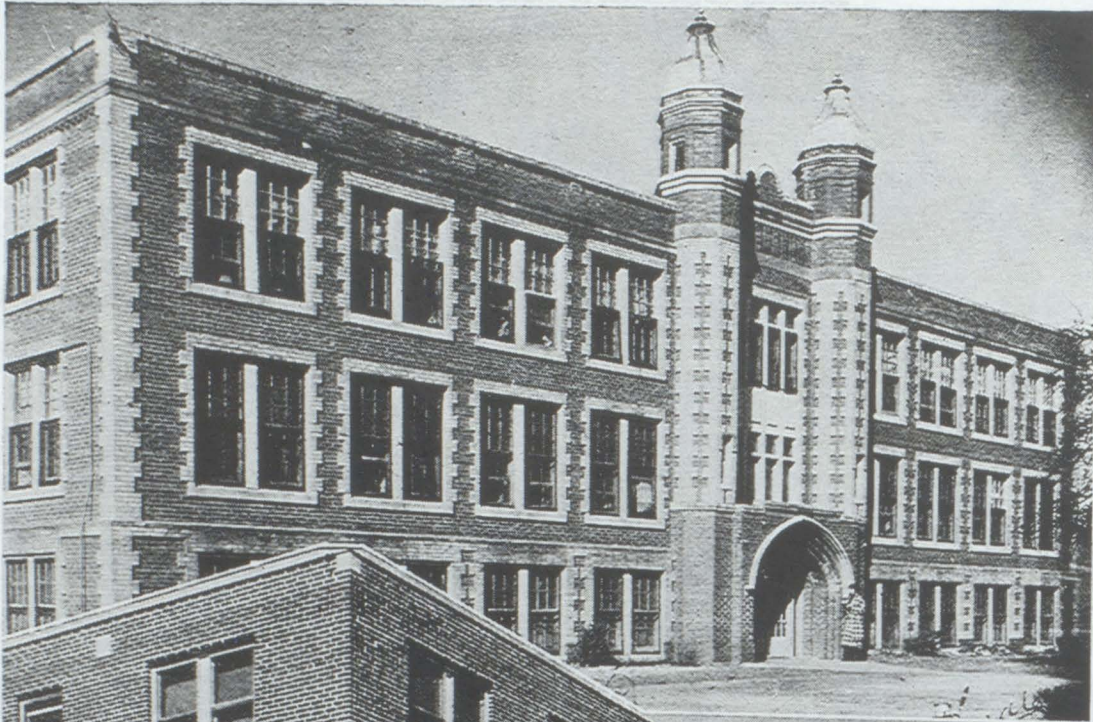
BIRDS-EYE VIEW OF THE CAMPUS



GYMNASIUM

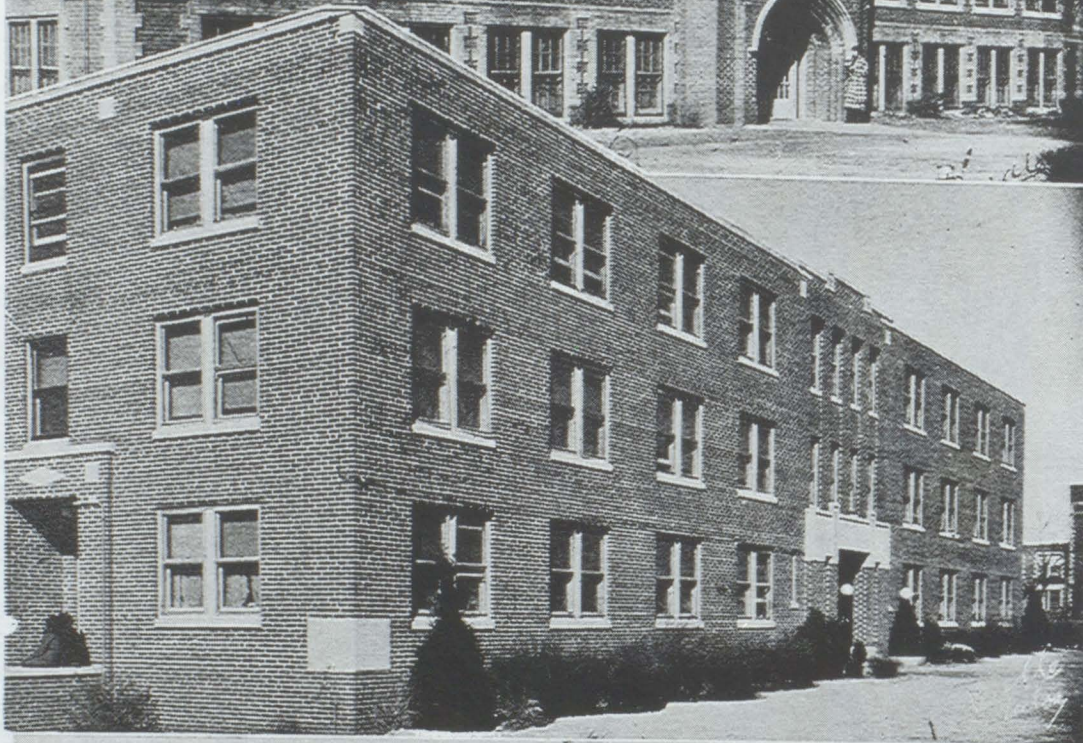


PAGE HALL



PHYLLIS
WHEATLEY
HALL

• • • • •

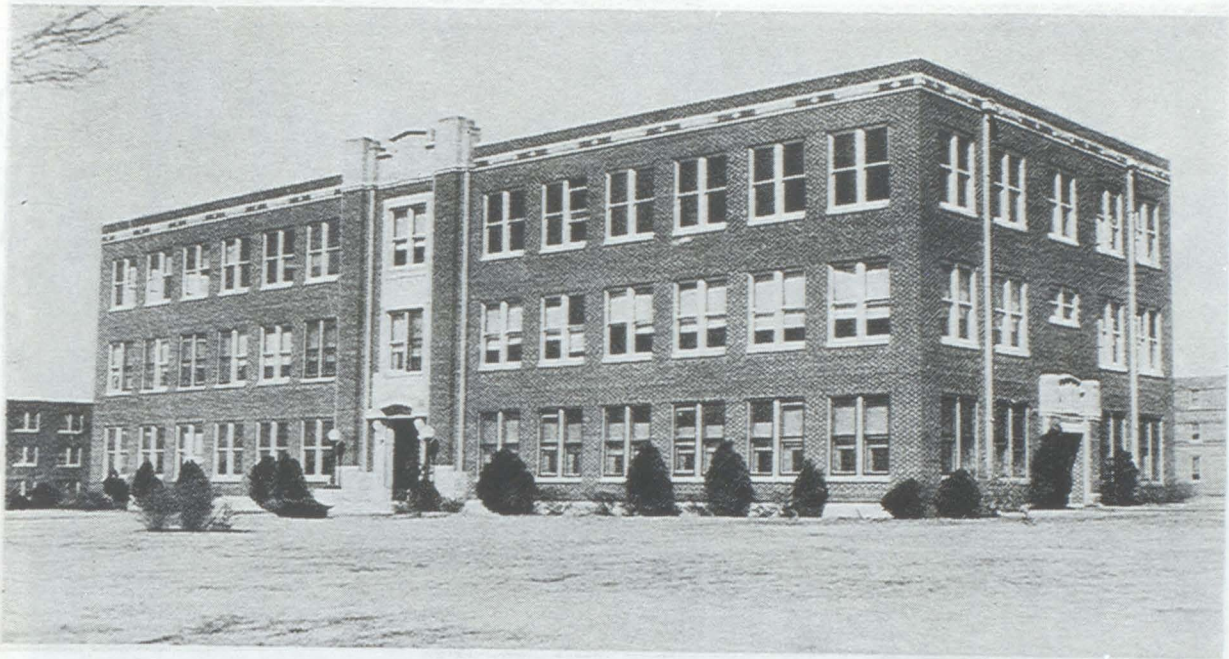


UNIVERSITY
WOMEN'S
HALL

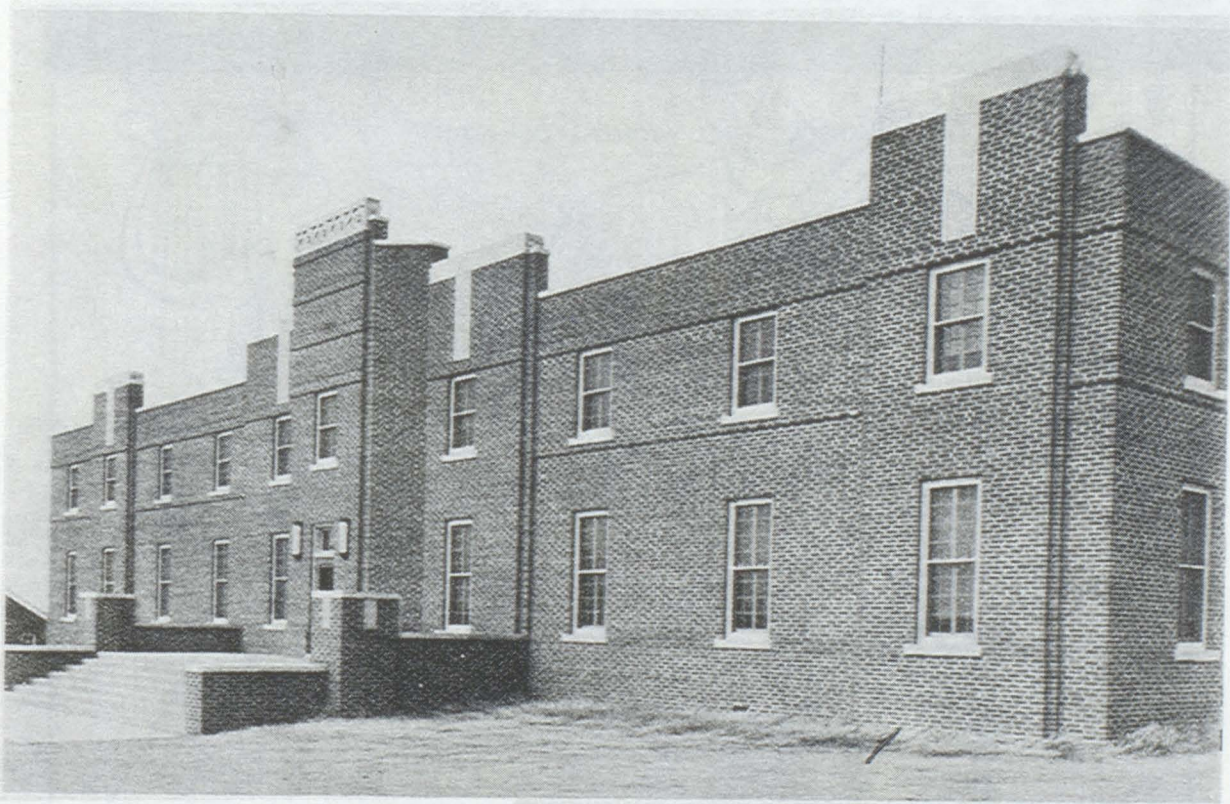
• • • • •



UNIVERSITY
MEN'S
HALL



ADMINISTRATION BUILDING



UNIVERSITY OF MEN ANNEX

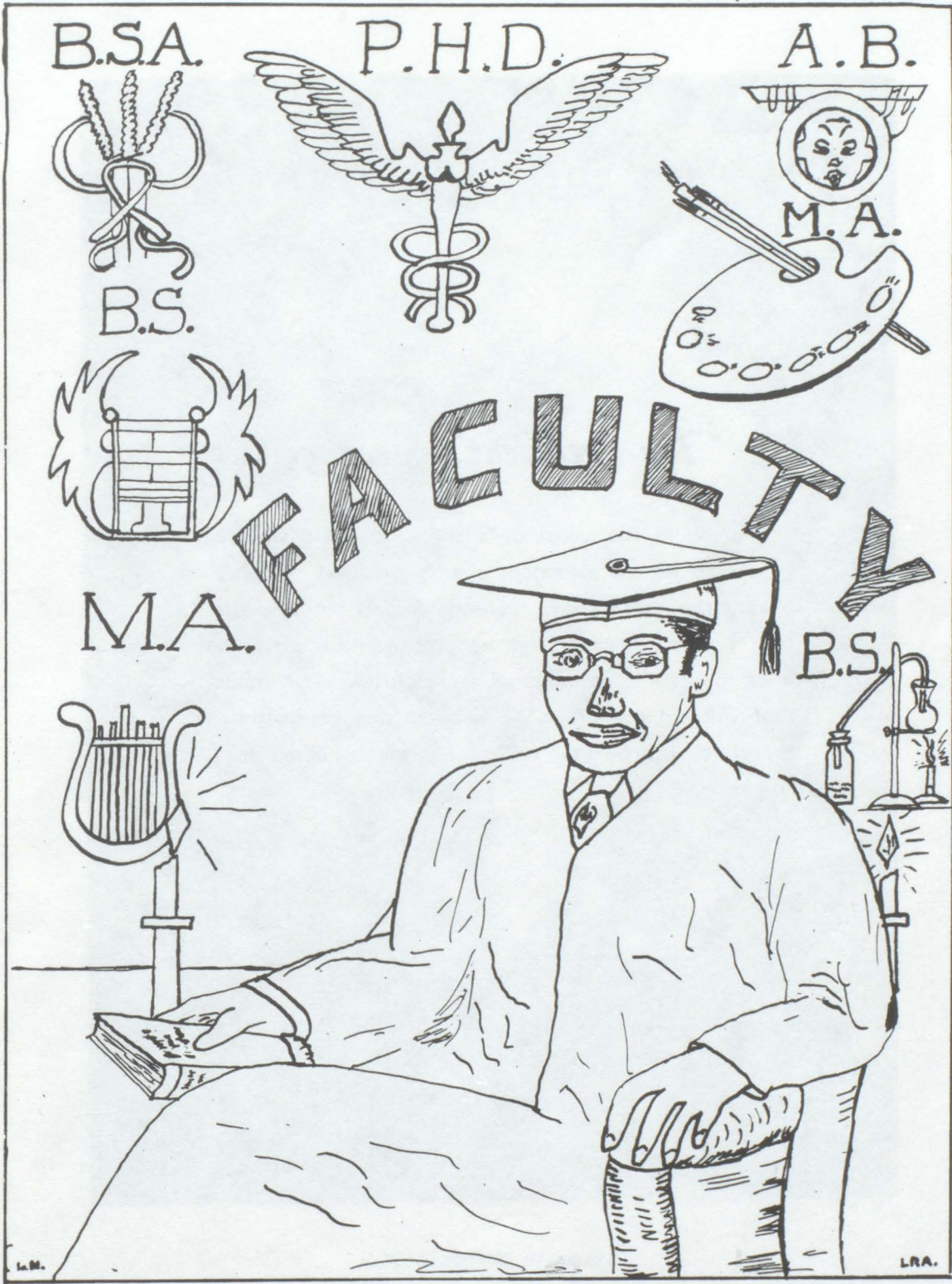
*Jean Marquess Alexander
Floyd Marguerite Alexander*



*Wells Muel Baucom
214
Buckston*

*Randy
Coley*

SANFORD HALL WOMENS DORMITORY





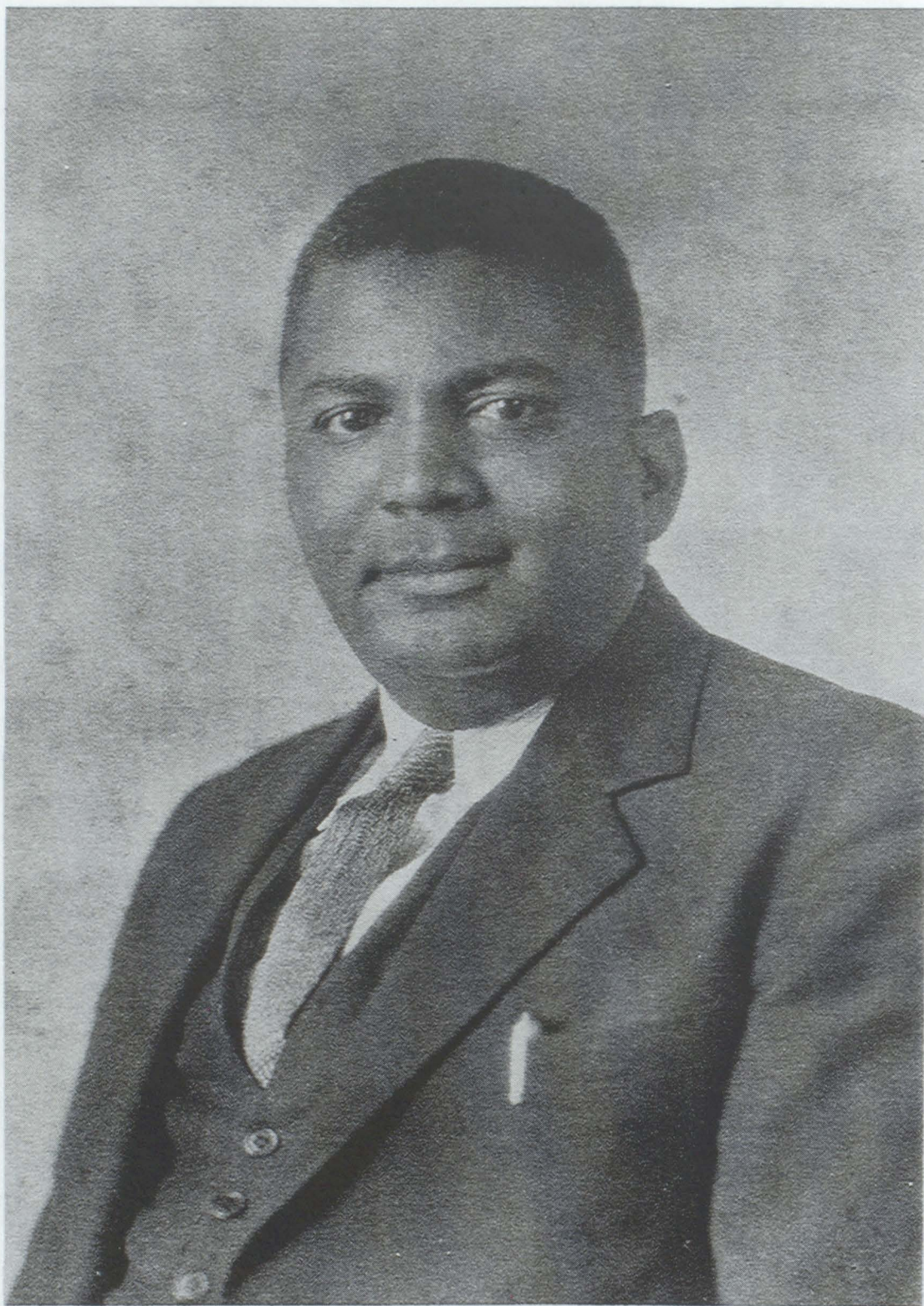
The President's Message

We are in the midst of a changing world when all around us we see evidences of upheaval and tendencies toward the breakdown of standards and moral virtues. It is a period of grave concern, and we must direct our lines to a fuller intellectual and spiritual development that will aid our group to weather this readjustment, therefore, I urge you to be courageous, hopeful and frugal.

J. W. SANFORD.



J. W. SANFORD, President



JOHN C. TINNER, Dean of College
B. S. Howard, 1921
University of Chicago
Junior Fellow, University of Chicago
M.S.—University Chicago



ELBERT LEE TATUM
Dean of Men
M.S.—University Illinois
Instructor Political Science

MRS. C. V. SANFORD
Sponsor, Philorati Club
Sponsor, Pep Squad





EVELYN I. ADAMS
Acting Registrar
A.B.—Wilberforce



W. E. HEBERT
Financial Secretary



K. L. JONES
Secretary to President
B. S. West Virginia State College
Alpha Delta Sigma Scholastic
Honorary Society



EVELYN R. WOFFORD
Instructor in Elementary Education
M.A.—Columbia University



EDWARD K. WEAVER
Instructor in Biology
M.S.—Iowa University



HOBART S. JARRETT
Instructor in English
M.A.—Syracuse University



GLADYS J. WYNNE
Instructor in Spanish
M.A.—Columbia University



R. B. WELCH
Store Room and Supply
B.S.—C. A. & N. University



CONSTANCE R. DAVIS
Instructor in Physical Education
B.S.—West Virginia State College



OPHELIA S. STEPHENSON
Secretary—Trades Department
B.S.—C.A.&N. University



PEGGY BROWN
Assistant Registrar
B.A.—C.A.&N. University



JACK H. JEFFERSON
Instructor in Chemistry
M.S.—Iowa University



HELEN A. ROUCE
Instructor in Mathematics
M.S. Colorado State Teachers College



J. C. McLAURIN
Instructor in Business Administration
M.A.—University of Kansas



IDA M. ROWLAND
Instructor in Education
M.A.—Omaha University



WILK S. PETERS
Librarian
B.L.S.—Hampton



B. L. CHATHAM (JACKSON)
School Nurse
R.N.—Prairie View College



GLADYS TILLMAN
Instructor in English
M.S.—Northwestern University



G. P. BENJAMIN
Band and Orchestra
Mus.B.—University of Michigan



Z. R. MILLS
Secretary—Agriculture Department



ROBERT F. SHORT
Instructor in Auto Mechanics
B.S.—Hampton



SADIE G. WASHINGTON
Instructor in
Home Economics
M.S.—Columbia University



H. FRANKLIN MELLS
Instructor in Music
A.B. Morehouse



Z. S. BROOKS
Instructor in English
B.L.I.



J. J. SEABROOK
Instructor in Social Science
M.L., M.S.



ZELLA J. BLACK
Instructor in
Home Economics
B.S.—C.A.G.N. University



HILLIARD A. BOWEN
Instructor in Education
M.A.—Ohio State University



G. C. HAMILTON
Instructor in Biology
M.S.—Kansas University
Acting Head of Natural
Science Dept.



A. D. BELLEGARDE
Instructor in French
D.V.M.



D. C. JONES
Instructor in Agriculture
M.S. Cornell University



NETTIE WHEAT
Matron—Phyllis Wheatley Dormitory



OTIS ISAAC
Instructor in Shoe Making



L. E. GANDY
State Field Agent of Home Economics
B.S.—Kansas State Teachers College



E. M. GOODLOW
Assistant—Laundry Department



LEGOLIAN GUDE
State Field Agent—Trades

STUDENT COUNCIL



A. C. HEBERT
Superintendent of Building
and Grounds
B. S. in E. E.



H. B. MILLER
Instructor in Music
M.S.—Northwestern University
M.Mus.—Northwestern University
Alpha Kappa Alpha Sorority
B.A.—Fisk



B. V. JOHNSON
Instructor in Agriculture
M.S.



A. H. ROBERTS
Clerk—Financial Office



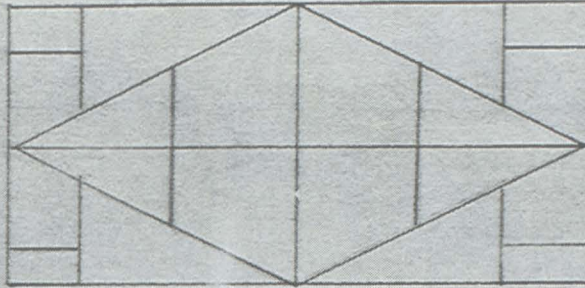
ALBERT PREWITT
Farm Foreman
B.S.C.A.N. University



EDITH IRENE TATE
Instructor in Home Economics
M.S.—Columbia University



Samuel Fuhr
(President)



James Mc Carr
(Treasurer)



Paul Strong
(Senior Class Representative)



Cecile V. Evans
(Secretary)



William Hale
(Councilman at Large)



Francis Ellis
(Junior Class Representative)



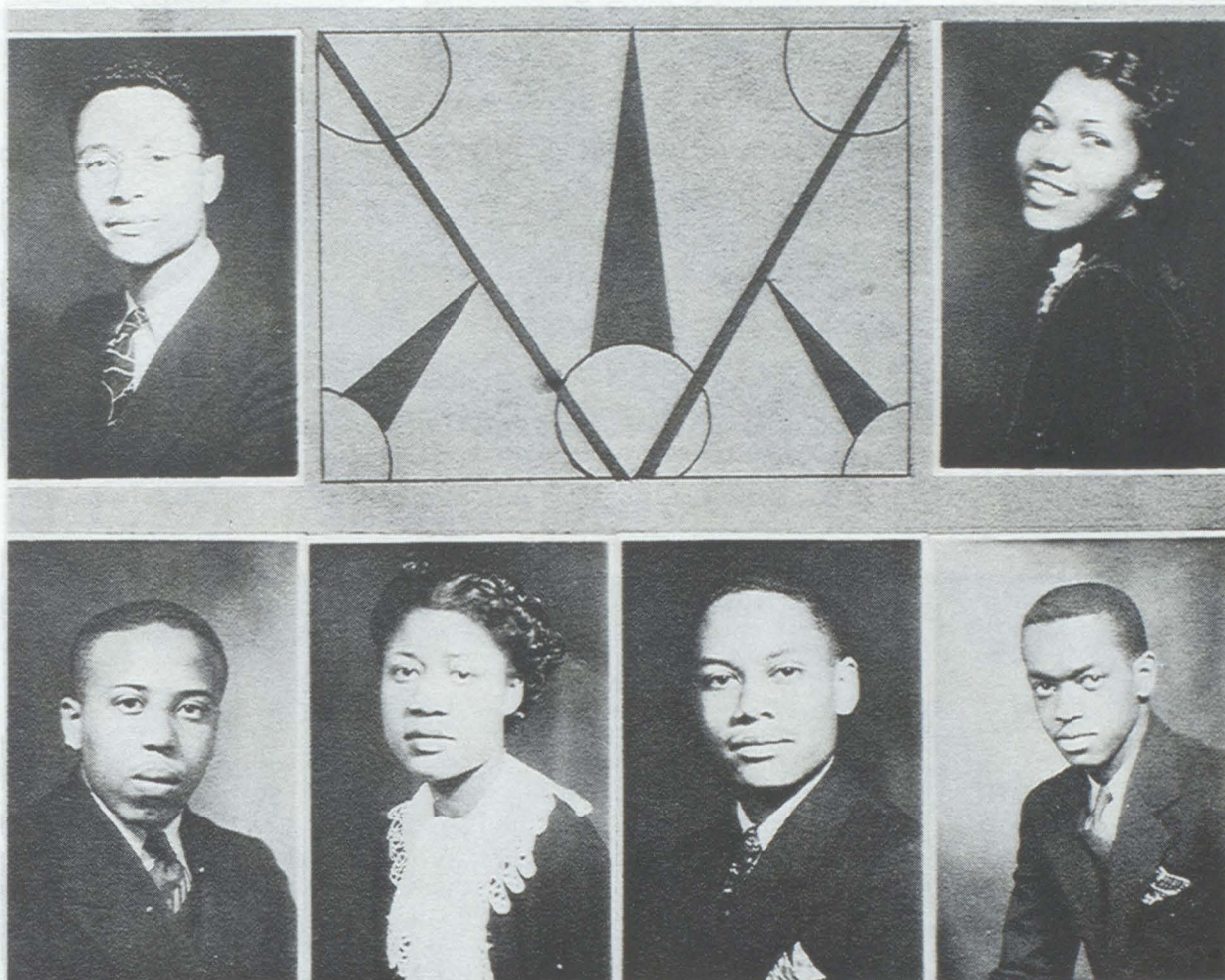
Wendell Gray
(Freshman Class Rep)



George M. Hubbard
(Sophomore Class Rep)

STUDENT COUNCIL





SENIOR CLASS OFFICERS:

LAWRENCE S. LACKEY "Stark", President (Top)

Chemistry and Mathematics—Major
Alpha Phi Alpha Fraternity
Y. M. C. A.
N. A. A. C. P. Pres.

MAXINE G. HUBBARD "Diane", V. P. (Top right)

Commerce and English—Major
Philorati Club
Y. W. C. A.—Annual Staff
Women's League

HENRY ELLIOTT "Wimpy", Sergeant at Arms

Chemistry and Biology
Alpha Phi Alpha
Y. M. C. A.

CLYDE M. LEATHERS, Treasurer

Chemistry and Biology—Major
Kappa Alpha Psi Fraternity
Y. M. C. A.—Annual Staff

SARAH JANE HODGES, Secretary (Bottom)

English—Major
Zeta Zeta Zeta Club
Women's League

PAUL L. STRONG "Stoney", Rep. of Stu. Council

Alpha Phi Alpha Fraternity
Chemistry and Biology—Major
Y. M. C. A.—Editor of Annual



ANITA ALLEN
"Neet"
Iota Beta Chi
Commerce



BOOKER T. TUCKER
"Big Tuck"
Omega Psi Phi



IRENE FITZGERALD
"Skippy"
Zeta Zeta Zeta
Home Economics Club



LESLIE HIMES
Industrial Arts
Omega Psi Phi
Y. M. C. A.



GUSSIE B. JOHNSON
Commerce
Philorati
Iota Beta Chi



EMMETT HART
"Chick"
Kappa Alpha Psi
Orchestra—Band



MARY TRICE
"Pete"
Commerce



LUTHER JOHNSON
"Doc"
Omega Psi Phi
Ind. Club, Orchestra, Band



ELESTA E. JONES
Home Economics
Music, Science, Literature



WILLIAM E. HIBLER
Biology and Mathematics
Kappa Alpha Psi



LAVERNE SCOTT



DELLA GRAY
Elementary Education
Philorati



BLANCHE McCUTCHEON
"Mackie"
Elementary Education
Social Science—C. O. C.



HAZEL LISTON "Doll"
Home Economics Club
A Cappella Choir
Dramatics—Y. W. C. A.



PALMA BRUNNER
Elementary Education
Entre Nous



WILHELMINA STARKS
Home Economics
Entre Nous



CORDELIA OWENS



FRANCES GRAY
"Tony"
Pep Squad
Physical Education, History



FANNIE ROGERS
"Baby"
Philorati; Y. W. C. A.
Student Council; Dram. Club



PERRY FULLER
Scroller
A Cappella Choir
Men's Quartette



GENIEVE WEAVER
Home Economics



SAMUEL McHENRY
"Mac"
Vocational Agriculture
Aggie Club



LUVENIA C. TAYLOR
"Baby Lue"
Elementary Education
Physical Education Club



HATTIE CROOK
"Me"
Home Economics Club



JUANITA HARRISTON
"Nita"
Social Science



HENRY L. PARKER
"Kid Luck"
Alpha Phi Alpha
Chem., Biol. Sc., Band, Deb.



LOIS MARSH
Elementary Education
Philorati



LEROY RANDOLPH
Social Science



BEN PEEVY
Vocational Agriculture
Omega Psi Phi
"O" Club



GRACE PERKINS
Elementary Education



WILLIARD RATLIFF
"Bill"
Lampodos
Agriculture



VIRGIL GIBBS



MITTIE JACKSON
Home Economics



JOHN IRONS
"Iron Man"
Industrial Arts
Dramatics



GERTRUDE FRANKLIN
"Frank"
Entre Nous
Art and Elementary Edu.



EVANS FOWLER
Chemistry and Mathematics
Y. M. C. A.



EUGENE ANDERSON
"Poet"
Agriculture



MAE DORIS COPELAND
Elementary Education
Iota Beta Chi
Pep Squad



ALPHONZO STRICKLIN
"Daddy Strick"
Industrial Arts
Lampodos



M. M. HUTTON
Home Economics



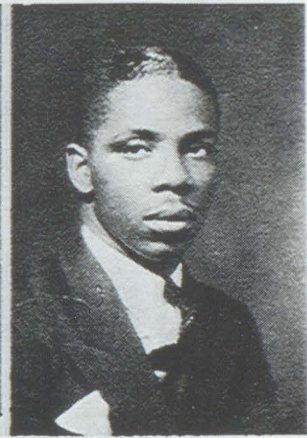
VIORA GRIMES
"Vi"
Home Economics Club



GEORGE R. RAGLAND
"Romeo"
Alpha Phi Alpha
YMCA; Pep Sq.; For. Soc.



ELLA V. GROSS
Iota Beta Chi
Pep Squad



T. M. ROBERTS
Kappa Alpha Psi
"O" Club; French Club
Forensic Society



MARION BARBER
Industrial Club



LEOLA RANDALL
"Lee"
Zeta Zeta Zeta
Elem. Educ.; English



HENRY JONES
Agriculture
Omega Psi Phi



JEFFRY CHATMAN
"Jeff"
Social Science
Tennis and Band



ORA J. MACKAY
Elementary Education
Zeta Zeta Zeta



TILBERT GREEN
Social Science



JEWEL CARTER
"Jewelly"
Iota Beta Chi
Elementary Education Club



F. M. MCGINNIS
Vocational Agriculture
Scroller
Aggie Club—Choral Club



THEODORE ROBERTS
Vocational Agriculture
Omega Psi Phi



BESSIE CRAWFORD
"Mama"
Elementary Education Club



ARTHUR G. JOHNSON
Football Captain "37"
Alpha Phi Alpha
"O" Club



MARY E. JANE TUCKER
"Tuck"
Philorati—Pep Squad
Women's League



SYVILLA WEATHERFORD
"Baby"
Philorati—Women's League
Asst. Sec. Senior Class



CHARLIE WEBB
"Wolf"
Kappa Alpha Psi
Industrial Club



MILDRED JACKSON
"Mirit"
Iota Beta Chi



R. E. OLIVER
"Pat"
Alpha Phi Alpha
Industrial Club



CARL PEEVY
"Little Peevy"
Omega Psi Phi
Industrial Club



JESSIE LYDAY
"Babe"
Iota Phi Lambda
Dramatic Club



HOYLE CARTER
"Kelley"
Biology



THELMA KING
Home Economics
Home Economics Club



GRACE CULLOM
Elementary Education
Y. W. C. A.



DORIS VANCE
Chemistry
A Cappella Choir



GERTHIA M. CULLOM
"Gert"
Elementary Education
Y. W. C. A.



REBECCA NOBLE
Zeta Phi Beta
Physical Education



RANDALL BAKER
Mathematics & Engineering
Alpha Phi Alpha
"O" Club



MARIE YOUNG
"Ree"
Zeta Zeta Zeta
Elementary Education



VIRGIL CHANDLER
"Mike"
Alpha Phi Alpha
Dram. Club—Forensic Soc.



LOYCE COOPER
Home Economics
Archonian



EFFIE HILDRETH
Commerce
Iota Beta Chi
Women's League—Y.W.C.A.



VICTOR WILSON
"Vic"
Kappa Alpha Psi
Agriculture



FLOSSIE CAWTHORNE
"Toots"
Elementary Education



OLIVA ROSS
"Levia"
Iota Phi Lambda
Women's Le.—Spanish Club



MANZELLA BROWN
"Man"
Industrial Arts
Industrial Arts Club



FLORA D. SWANSON
Home Economics



FLORENCE MILES
Y. W. C. A.



JOHNNIE M. LOVE
"J. Florine"
Physical Edu.—Y. W. C. A.
Archonian—Spanish Club



EVA MAE BUFORD
"Mutt"
Zeta Phi Beta
Soc. Sc. and Elem. Ed.



GAYNELLE TOLLIVER
Home Economics
Zeta Phi Beta



ETHEL ALFORD
"Smiley"
Elementary Education
Entre Nous.



JESSIE M. TIMMS
"Sweet"
Elementary Education
French Club—Ele. Ed. Club



ELVIE McGLORY
English
Y. W. C. A.



BOOKER PARKER
Voc. Agric.
Kappa Alpha Psi



HARRIET HUTSON
Elem. Ed.



RUBY JAGGERS
"Babe"
Iota Beta Chi
Elem. Ed.



GUY NEWTON
Social Science
Omega Psi Phi



MOLLYE JORDAN
Home Economics
Zeta Zeta Zeta



OPAL MOORE
Home Economics
Zeta Zeta Zeta



VELMA VICK
Commerce
Social Science



N. LEDSINGER HUGHES
"Ledsinger"
Elementary Education
Y. W. C. A. — O. E. S.



ZENOPIA B. TAYLOR
Alpha Kappa Alpha



EVA MAE JOHNSON
Elementary Education



RUTH MASON
Industrial Arts
Industrial Club



MYRA JEAN TURNER
Elementary Education
Iota Beta Chi
Women's League
Assistant Nurse

TOMMYE
FRANTINE GAYLES
"June"
Tri-Zeta Club
Elementary Education

JAMES ELDRIDGE McCANN
"Mac"
Alpha Phi Alpha
Y. M. C. A.
Stu. Coun.—Forensic Soc.
Biological Science

This space is dedicated to the Seniors
whose picture does not appear:

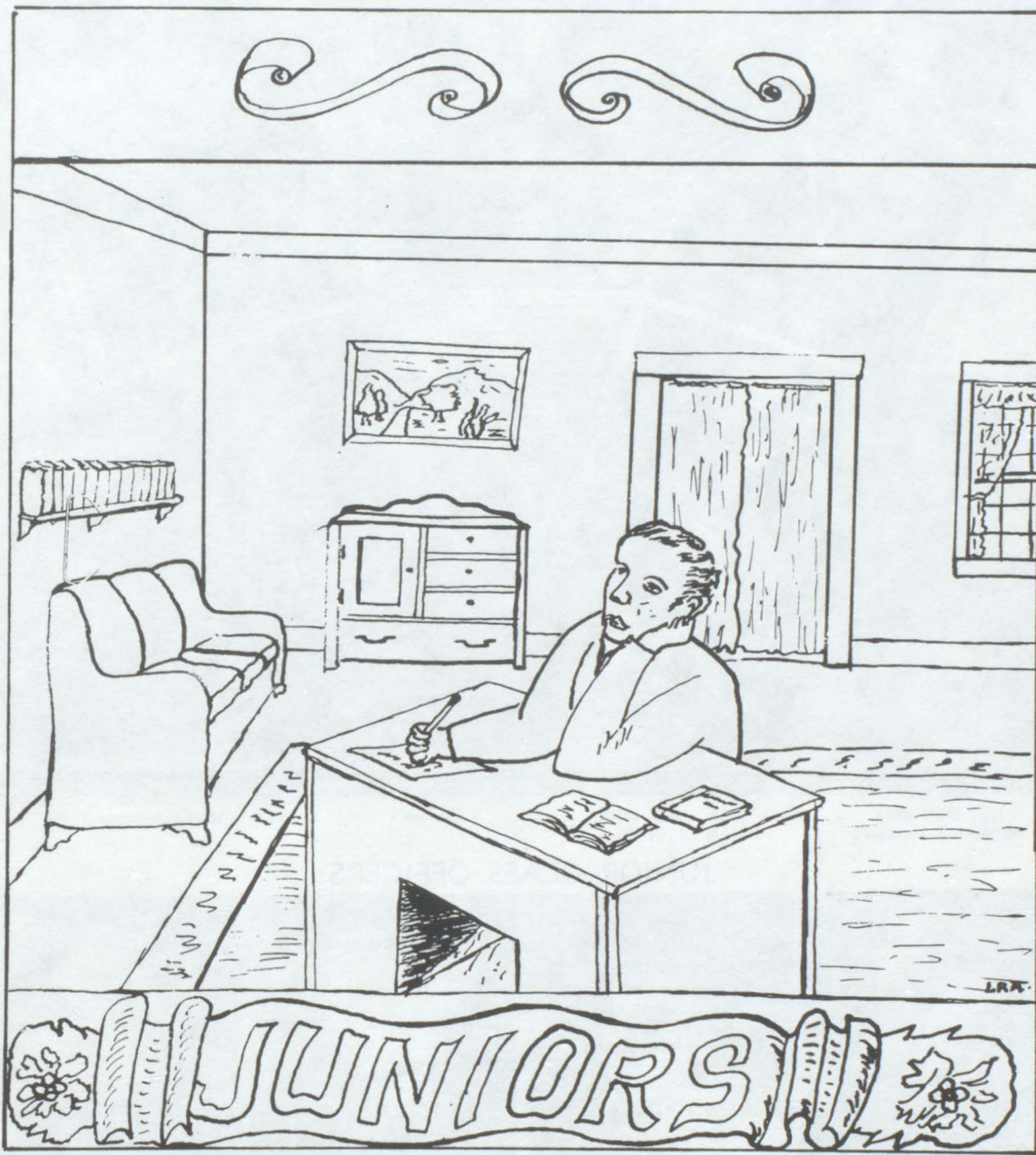
- CORTEZ E. COX
- ELZIE COLBERT
- LORENZO W. SNEED
- ELLA MAE BROWN
- MINUS CAMPBELL
- ALASKA HOWELL
- PAULINE EARLS



TO THE FACULTY, PRESIDENT AND STUDENT BODY:

To have been a Langstonite, and helped others to have lived better and happier, we hope to leave some inspiration, and glow of character never to grow dim, in a world all too dark to many, any way.

*"We are no longer hopeless,
We have opened our minds to hope,
Our hearts to joy,
And our souls to faith,
We choose to be happy,
We choose to be free.*





JUNIOR CLASS OFFICERS:

SAMUEL E. FUHR "Curley", Pres. (Middle top)
Agriculture
Alpha Phi Alpha Fraternity
President, Student Council
Y. M. C. A.
Athletic Association

ELMER C. JACKSON "Little Jack", V.P. (Left top)
Chemistry and Biology
Alpha Phi Alpha Fraternity
Y. M. C. A.
Assistant Chemistry Teacher

ROBERT KING, Jr., "Rail", Treas. (Right top)
Chemistry and Mathematics
Y. M. C. A.

VALRIE PARKER "Val", Secretary (Bottom left)
English
Philorati Club
Y. W. C. A.

BERNICE McINTYRE, Asst. Sec'y. (Bottom right)
Elementary Education
Zeta Phi Beta Sorority
Choral Club



CECILLE VINITA EVANS
"Cecil"
Zeta Zeta Zeta; YWCA;
Stu. Coun.; A Cap.; W. Lea.



EMERY H. JENNINGS
"Chico"
Alpha Phi Alpha—YMCA
An. Staff; NAACP; For. Soc.



BLANCHE BROWN
Elementary Education
Philorati



ARTHUR HOLT
"Slats"
Sphinx



ALMADGE NEWKIRK
Sphinx
A Cappella Choir



VIRGINIA WASHINGTON
"V-A"
Key



WILLA MUSGROVE
"Bill"
Zeta Zeta Zeta
Y. W. C. A.



MURIEL JONES
"Jonesie"
Iota Beta Chi
Physical Education



INEZ STUBBLEFIELD
"Stubby"
Zeta Zeta Zeta
A Cappella Choir



GARLAND HAILEY



TERESA McGEE
Music
Dramatic Club
Y. W. C. A.



OSCAR ATKINSON
Industrial Arts
Industrial Club



BEULAHMAE BAKER
"Boots"
Philorati; YWCA
A Cap. Choir; Women's Lea.



WILLIE D. SMITH
"Smittie"
Agriculture
Track Team



THELMA M. COOPER
Elementary Education
Zeta Phi Beta



FRANCIS E. ELLIS
"Phil"
Alpha Phi Alpha
Stu. Council; YMCA; Band



LOUISE E. BROWN
"Baby Face"
Iota Beta Chi
A Cappella Choir



LESLIE PITTMAN
"Mama"
Kappa Alpha Psi
A Cappella Choir



BONNIE H. GOOSEBY
Commerce
Iota Phi Lambda
Y. W. C. A.



ORA KEMP
Biology
Alpha Phi Alpha
Y. M. C. A.; Pep Squad



AGNES E. ELLISON
"Brownie"
Alpha Kappa Alpha
Dramatic Club



RICHARD D. JONES
"Fat"
Sphinx; Y. M. C. A.
Orchestra; Pep Squad



CLARA E. HIBLER
Commerce
Zeta Zeta Zeta
N. A. A. C. P.



FULTON MORRIS
Industrial Arts
Omega Psi Phi
Y. M. C. A.



HELEN LEE
Home Economics
Archonian



CURTIS HALL
"Curly Top"
Sphinx
Dramatic Club



OLLIE M. McDANIELS
Commerce
Entre Nous



AUDREY PRUITT
"The Texas Terror"
Omega Psi Phi
Industrial Club



T. H. SUDDUTH
"Paddy"
Kappa Alpha Psi
Pep Squad



MABEL RICHARDSON
Home Economics



FREEMAN CRAWFORD
"Jake"
Omega Psi Phi
Ind. Club; "O" Club



MARIE MILLER
Archonian



STELLA BURLIEGH
Elementary Education
Entre Nous



THEO McINTOSH
Elementary Education
Lampados



LUCILLE WRIGHT
"Wrighty Girl"
Elementary Education Club



HOYT McINTOSH
Aggie Club



BERNICE MARSHBANKS
Y. W. C. A.
Commerce



VERNELL SUDDUTH
English
Debate Club



EUGENE MOORE
"Agnie"
Kappa Alpha Psi
Dramatic; Chorus



ORA D. GREER
"Dee"
Zeta Zeta Zeta
W. Lea.; YWCA; Fr. Club



NEVADA AMOS
Commerce
Iota Beta Chi
Women's League; YWCA



HASKO ELLIS
"Red"
Alpha Phi Alpha
Aggie Club



LOTTIE MONROE
Home Economics
Philorati
Y. W. C. A.



CHARLES WELDON
"Shang"
Sphinx
Ind. Arts; "O" Club



W. T. MCKENZIE
Industrial Arts
Alpha Phi Alpha
Y. M. C. A.



ODELL JOHNSON
Music
Iota Beta Chi



ALPHONZO PYLE
"Funny"
Kappa Alpha Psi
Industrial Club



IMOGENE PONDEXTER
"Jean"
Industrial Arts
Ind. Arts Club; Entre Nous



LEANDER WEST
Biology
Sphinx
Pep Squad



EVELYN RICHARDSON
Music
Philorati; YWCA
School Pianist



BEN LOVE
"The Doctor"
Alpha Phi Alpha
Forensic Society



CAMILLE HUDSON
"Kay"
Elementary Education
Elementary Club



PARALEE FOWLER
"Popeye"
Home Economics Club



JOE THOMAS
"Little Joe"
Industrial Club



THIRKIELD MOON
"Theek"
A Cappella Choir
Dramatic Club



MILDRED EVANS
Home Economics
Home Economics Club
Y. W. C. A.



RICHARD BRADFORD
"Buddie"
Kappa Alpha Psi
Industrial Club; Pep Squad



ANN DAVIS
Social Science
Y. W. C. A.



CORDIE DAVIS
"Square"
Vocational Agriculture
Aggie Club



HOWARD CLAY
Music and History
Band



E. W. MOORE
"Father"
Alpha Phi Alpha
Orchestra



JUANITA FOSTER
"Apples"
Archonian
Elem. Education and Art



ROBERT LOVE
"Bob"
Sphinx; YMCA
Spanish Club



GOLDIE C. NORMAN
"Venus"
Iota Beta Chi
French Club; Tennis Club



FREDONIA RICHARDSON
Music
A Cappella Choir



ODIE BROOKS
Biology



MENTORIA WALKER
Entre Nous



W. F. TALTON
"Jimmie"
Sphinx
Mathematics



VELMA B. McCORMICK
"Vel"
Iota Beta Chi



KING TAYLOR
"Red Onion"
Kappa Alpha Psi
Dramatic Club



LOLA PARKER
Home Economics
Zeta Zeta Zeta



ETHEL BURNS
Biology
Zeta Phi Beta
Spanish Club



OTIS WILLIAMS
Math. and Biological Science
Sphinx
Y. M. C. A.



LYDIA D. SMITH
Commerce
Lomepa



THEODORE DANIELS
Elementary Education



CLAUDIA GILKY
Elementary Education
English
Y. W. C. A.



MINNIE PEARL CORBIN
"Mooche"
Iota Beta Chi
Annual Staff



JOHN YOUNG
Biology
Kappa Alpha Psi
Orchestra; Band



ROSALYND NOBLE
"Rose"
Philorati
Elementary Education



J.D. LAVERNE ALEXANDER
"Chicago"
Kappa Alpha Psi
A Cappella Choir



CLEMON ASHLEY
Vocational Agriculture
Alpha Phi Alpha
Aggie Club



GAY BERTHA HADDOX
"Bert"
Zeta Phi Beta
Y. W. C. A.



LESLIE MINFIELD
"Minnie"
Scroller



BEATRICE WILLIAMS
"Bee"
Dramatic Club; Entre Nous;
Elem. Edu. and Phy. Edu.



ESTELLE ALEXANDER
Commercial Education
Social Science
Home Making



ELHUE J. PACKARD
"Pack"
Scroller
Industrial Club



ALVAH LOYCE HYNSON
Physical Education
Strata
Physical Education Club



CLARENCE BELL
Agriculture
Alpha Phi Alpha



ANDERSON LONIAN
"Dean"
Alpha Phi Alpha
Y. M. C. A.



FLETA MARGIE HENSON
"Verg"
Zeta Phi Beta
Home Economics



FRED DAVIS
English
Social Science
Choral Club



CLEMINTINE WASHINGTON
Elementary Education
Entre Nous



MARY LEE WALLACE
"Baby Sis"
Entre Nous
Elem. Edu. and Art



JOSEPH WESLEY
Mathematics



KATHERINE JACKSON
"Kat"
Archonian
Home Ec. Club; Dram. Club



HYVA GRIFFIN
"Joe Louis"
Chemistry
Omega Psi Phi; YMCA



MARY ANN WILLIAMS
"Ma-Ann"
Zeta Phi Beta
Forensic Society



SENOVA HOLBERT
"Von"
Zeta Phi Beta



MYRTLE SIMMS
"Mirt"
Zeta Zeta Zeta
Home Economics Club



HUGH M. SHERMAN
"Ginger Rogers"
Art and History



KATHERINE JOHNSON
"Kat"
Forensic Society



EMMA ROYSTER
"Gate"
Home Economics
Home Economics Club



ELIZABETH HENDERSON
"Lizzie"
Archonian



VIVIAN NASH
Home Economics
Home Economics Club



JUAN N. GREEN
"Bootsie"
English



WILLIE B. ODOM
"Bob"
Social Science



PAULINE BARR



MAE ETTA FOSTER
Elementary Education Club
Y. W. C. A.



DOROTHY WILLIAMS
"Dot"
Zeta Phi Beta



IDA M. BURNS
"I.T."
Zeta Zeta Zeta
A Cappella Choir



NOREE SUTTON
"No"
Philorati
Home Economics Club



ESTELLA JAGGERS
"Lil One"
Zeta Phi Beta
Elementary Education



ERNESTINE WESLEY
"Ernie"
Commerce
Iota Phi Lambda



RUBY HIGHTOWER
"Sweetheart"
Home Economics Club
A Cappella Choir



BENNIE BROWN
Social Science
Dramatic Club



SARAH MORAN



ARCILLE DOAKES
"Arcil"
Dramatic Club



EDITH SMITH
Commerce

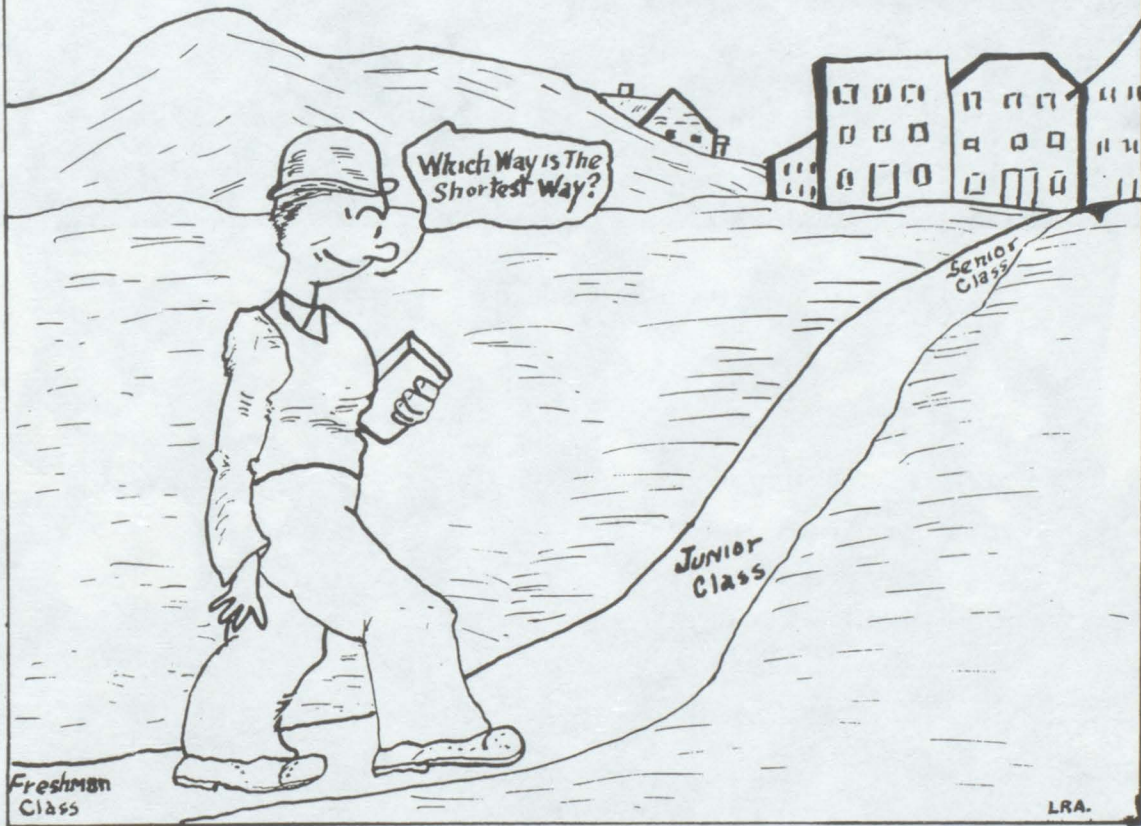


WESLEY SIMS
Social Science
Tennis and Pep Squad
Sphinx



BEATRICE N. WILLIAMS
Elementary Education

SOPHOMORES





SOPHOMORES OF 1938

William H. Hale	President
Edmonia Elliott	Secretary
Leo L. Woody	Treasurer
Prof. E. J. Brown	Sponsor



Jessie

SOPHOMORES OF 1938

FRESHMEN





FRESHMEN CLASS OFFICERS

Thomas English	-	-	-	President
Leodus Banks	-	-	-	Vice President
Frankie Wafer	-	-	-	Secretary
James Avery	-	-	-	Treasurer



FRESHMEN OF 1938



FEATURES



MISS HOME-COMING
Miss Lucille Hamilton "40"



MISS BAND QUEEN
Miss Corrine Perryman "40"



MOST BEAUTIFUL
Miss Maxine Hubbard "38"



MOST HANDSOME
John Young "39"



MOST POPULAR GIRL
Beulah Mae Baker "39"

MOST POPULAR BOY
William H. Hale "40"





MOST BRILLIANT GIRL
Larzette Golden "40"



MOST BRILLIANT BOY
Lawrence Lackey "38"

SENIOR PERSONALITIES



Clyde Leathers
Best Dressed Boy

Myra Turner
Best Dressed Girl

Maxine G. Hubbard
Most Beautiful

Leslie Himes
Most Popular Boy

Mildred Johnson Jackson
Most Popular Girl

John Irons
Most Non-Chalant

Ella V. Gross
Best Athlete

Luther A. Johnson
Most Handsome

Booker T. Tucker
Most Personality

Marye Jayne Tucker
Most Personality

Lawrence Lackey
Most Brilliant

T. M. Roberts
Best Athlete

SENIOR PERSONALITIES



ORGANIZATIONS



Luther A. Johnson
Business Manager



Paul L. Strong
Editor in Chief



William H. Hale
Associate Editor



C. Martin Leathers
Treasurer

The Lion Staff '38



Minnie Pearl Corbin
Staff Secretary



Emery H. Jenkins
Sales Manager



Maxine G. Hubbard
Society Editor



Beville U. Evans
Stenographer



S. P. Benjamin - Sponsor



John Dungee
Asst. Business Mgr.



Emmitt Hart
Sports Editor



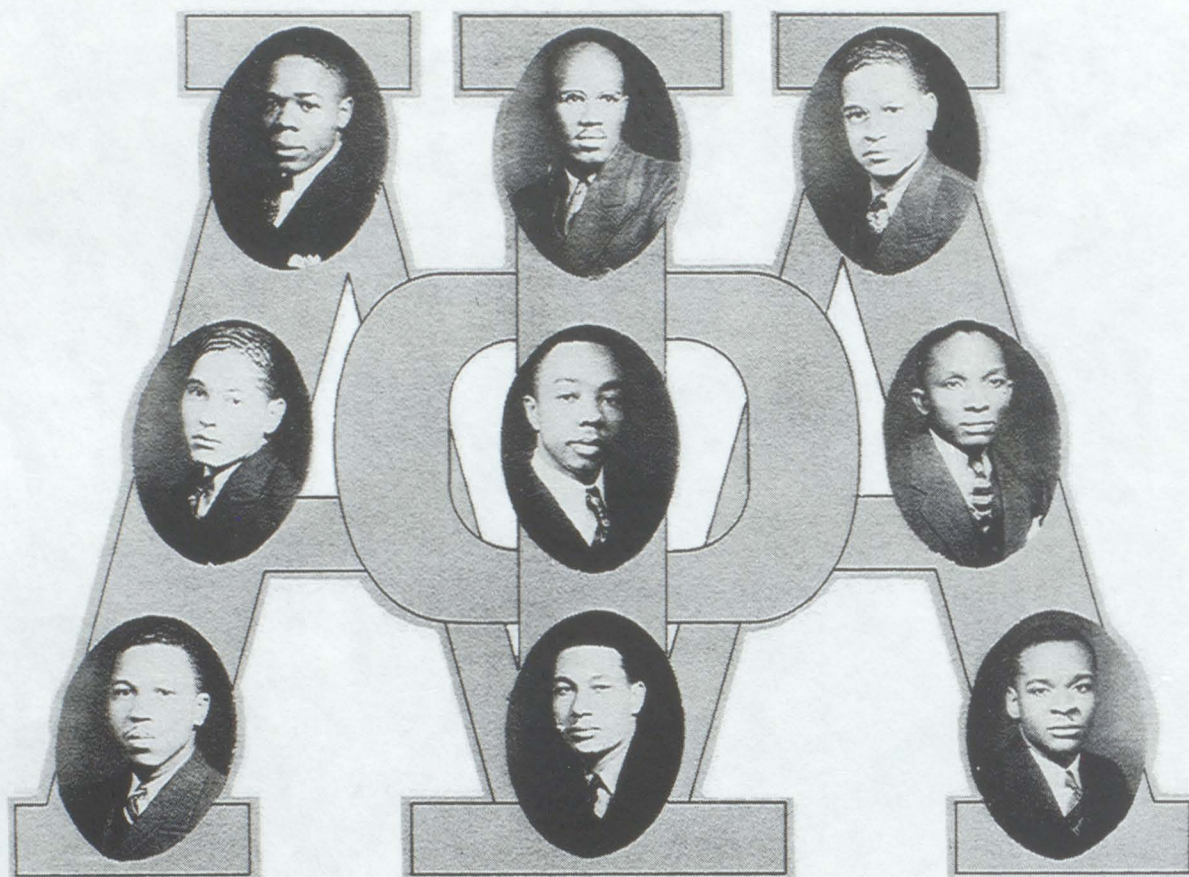
Henry L. Jones
Humorist



Levi Huff
Art Editor



Leslie R. Austin
Art Editor



Founded 1906 at
Cornell University — 116 Chapters
Internationally Located

Beta Kappa Chapter
(14 Charter Members)
Founded March 12, 1932

ALPHA PHI ALPHA

Strong, P. L.
Lackey, L. S.
Kemp, Ora
Ragland, G. R.
Elliott, H. W.
Ellis, Ora H.
McCann, James E.
Hubbard, George M.
Hale, Wm. H.
Johnson, A. G.

O F F I C E R S

President	- - - - -	Samuel E. Fuhr
Vice President	- - - - -	Hasko V. Ellis
Secretary	- - - - -	Elmer Chas. Jackson
Assistant Secretary	- - - - -	Francis E. Ellis
Treasurer	- - - - -	Clemon D. Ashley
Ed. to Sphinx	- - - - -	Ben D. Love
Sergeant-At-Arms	- - - - -	William T. McKenzie
Chaplain	- - - - -	Anderson Lonian
Historian	- - - - -	Ed. Wallace Moore

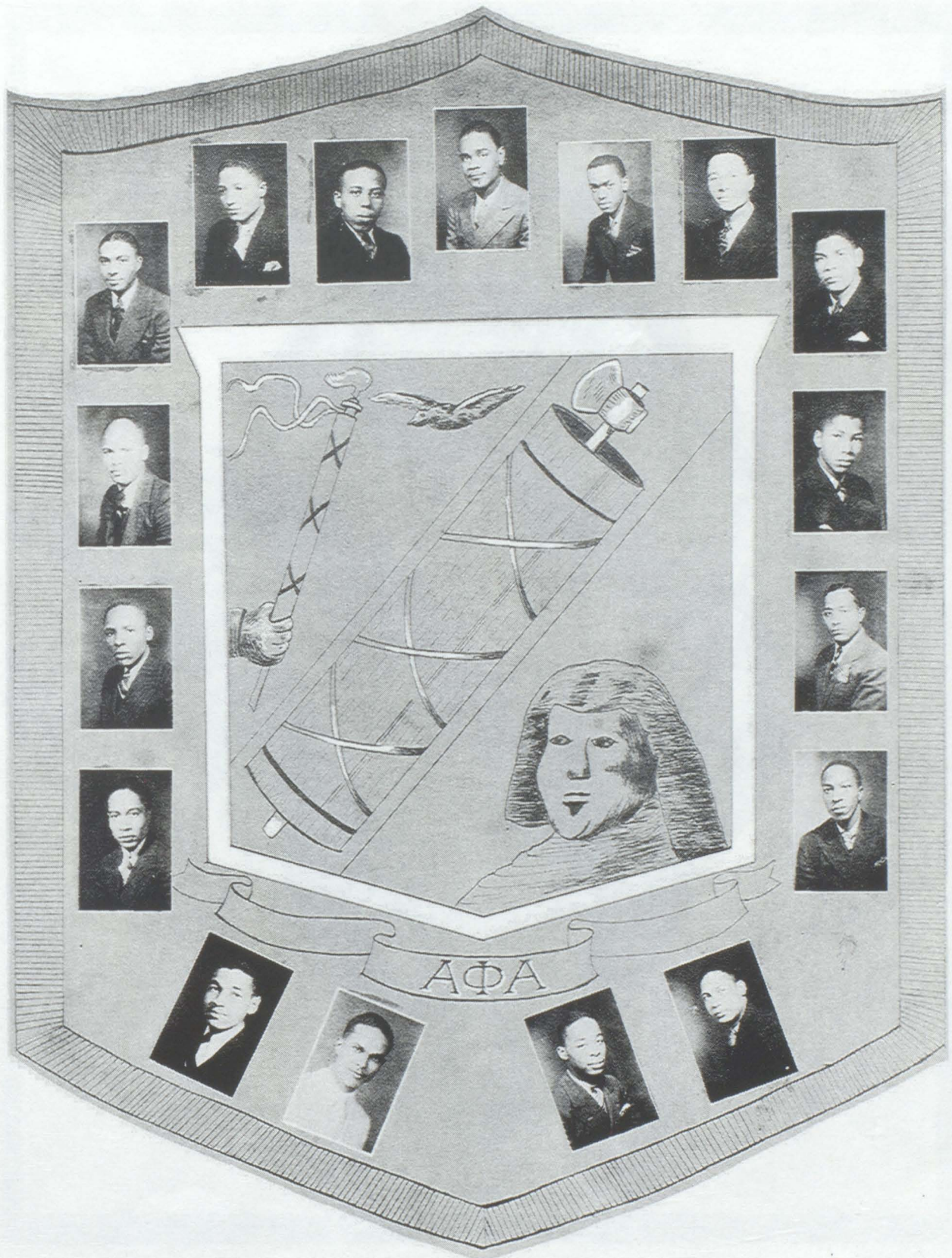
Parker, H. L.
Chandler, V. R.
Jennings, E. H.
Nolan, P. C.
Oliver, R. E.
Cox, Cortez
Baker, R. A.
Person, Theodore
Sneed, Lorenza
Bell, Clarence E.

BROTHERS ON THE FACULTY

Wilson, R. A.
Jones, K. L.
Brown, E. J.
Benjamin, G. P.
Short, R. S.

Hamilton, Gomez C.
Taylor, J. E.
Jarrett, H. S.
Jefferson, J. H.
Tatum, E. L.

J. J. Seabrook





Founded at Indiana University
January 5, 1911

Local Chapter Alpha Pi Chapter
Founded October 28, 1933

KAPPA ALPHA PSI FRATERNITY

OFFICERS

Clyde M. Leathers	-	-	-	-	-	Polemarch
Thomas Suddeth	-	-	-	-	-	Vice-Polemarch
William Gayles	-	-	-	-	-	Keeper of Records
J. D. Laverne Alexander	-	-	-	-	-	Keeper of Exchequer
Leo Adams	-	-	-	-	-	Strategus
Victor Wilson	-	-	-	-	-	Dean of Pledges
Leslie Pittman	-	-	-	-	-	Historian

R O S T E R

Richard Bradford	Alphonso Pyles
Everett Hibler	T. M. Roberts
Eugene Moore	King Taylor
Booker T. Parker	Charlie Webb

John Young





Founded November 11, 1911
At Howard University — 100 Charters
in United States and Canada

Phi Psi Chapter
Founded July 21, 1933

OMEGA PSI PHI

CHAPTER OFFICERS

Leslie Himes	-	-	-	-	-	-	-	Basileus
Luther Johnson	-	-	-	-	-	-	-	Vice Basileus
Audrey Pruitt	-	-	-	-	-	-	-	Keeper of Finance
Hyva Griffin	-	-	-	-	-	-	-	Keeper of Records and Seal
Henry L. Jones	-	-	-	-	-	-	-	Reporter
Booker Tucker	-	-	-	-	-	-	-	Chaplain
Ben Peevy	-	-	-	-	-	-	-	Keeper of Peace
Carl Peevy	-	-	-	-	-	-	-	Dean of Pledges

CHAPTER ROSTER

Leslie Himes

Luther Johnson

Audrey Pruitt

Carl Peevy

Freeman Crawford

B. F. Smith

Guy Newton

Chester A. Spears

Robert Clegg

E. A. Miller

John Garrett

Hyva Griffin

Booker Tucker

Henry L. Jones

Ben Peevy

Theodore Roberts

Levi Huff

Elmer Jenkins

Fulton Morris

Otis Isaac

C. D. Batchlor





R O S T E R

Marye Jayne Tucker
Maxine Hubbard Valrie Parker

Beulah Mae Baker
Rosalynde Noble
Fannie Belle Rogers

Sylvilla Weatherford
Della Gray
Corrine Perryman

P
H
I
L
O
R
A
T
I
C
L
U
B

O F F I C E R S

Marye Jayne Tucker - President
Maxine Hubbard - Vice Pres.
Mildred Morton - Secretary
Valrie Parker - Asst. Secretary
Sylvilla Weatherford - Treas.
Beulah Mae Baker - Reporter
Della Gray - - - - Chaplin
Noree Sutton - Sgt.-At-Arms
Rosalynde Noble - - - - Pianist

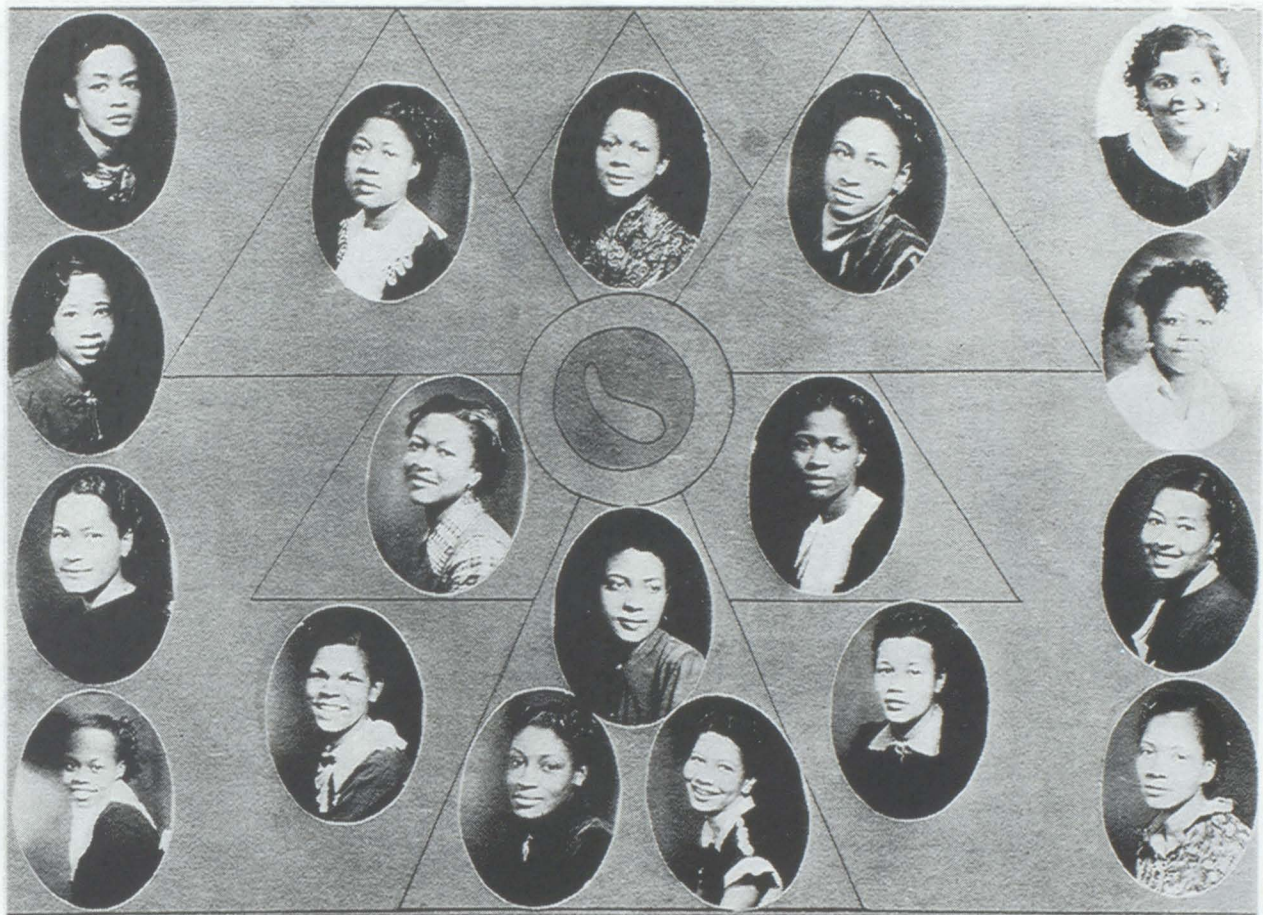
I
M
O
G
E
N
E
R
E
E
C
E

Blanche Brown
Edmonia Elliott
Evelyn Richardson

O T H E R M E M B E R S

Verna Mae Buckner
Mildred Morton

Zella Black Lois Scott Marsh
Lottie Monroe



ZETA ZETA ZETA CLUB

OFFICERS

Sarah Jane Hodges	- - - - -	President
Cecille V. Evans	- - - - -	Vice President
Ora D. Greer	- - - - -	Secretary
Myrtle L. Sims	- - - - -	Treasurer
F. Marie Young	- - - - -	Sergeant-At-Arms
Leola J. Randall	- - - - -	Assistant Secretary
Bertha A. Black	- - - - -	Pledge Mistress

OTHER MEMBERS

Irene Fitzgerald	Tommye F. Gayles
Clara Hibler	Willa Mae Musgrove
Lola Helen Parker	Molly S. Jordan
Ida M. Burns	Lorene Austin
Jewel Johnson	Ora J. Mackey
Inez Stubblefield	Opal J. Moore



IOTA BETA CHI CLUB

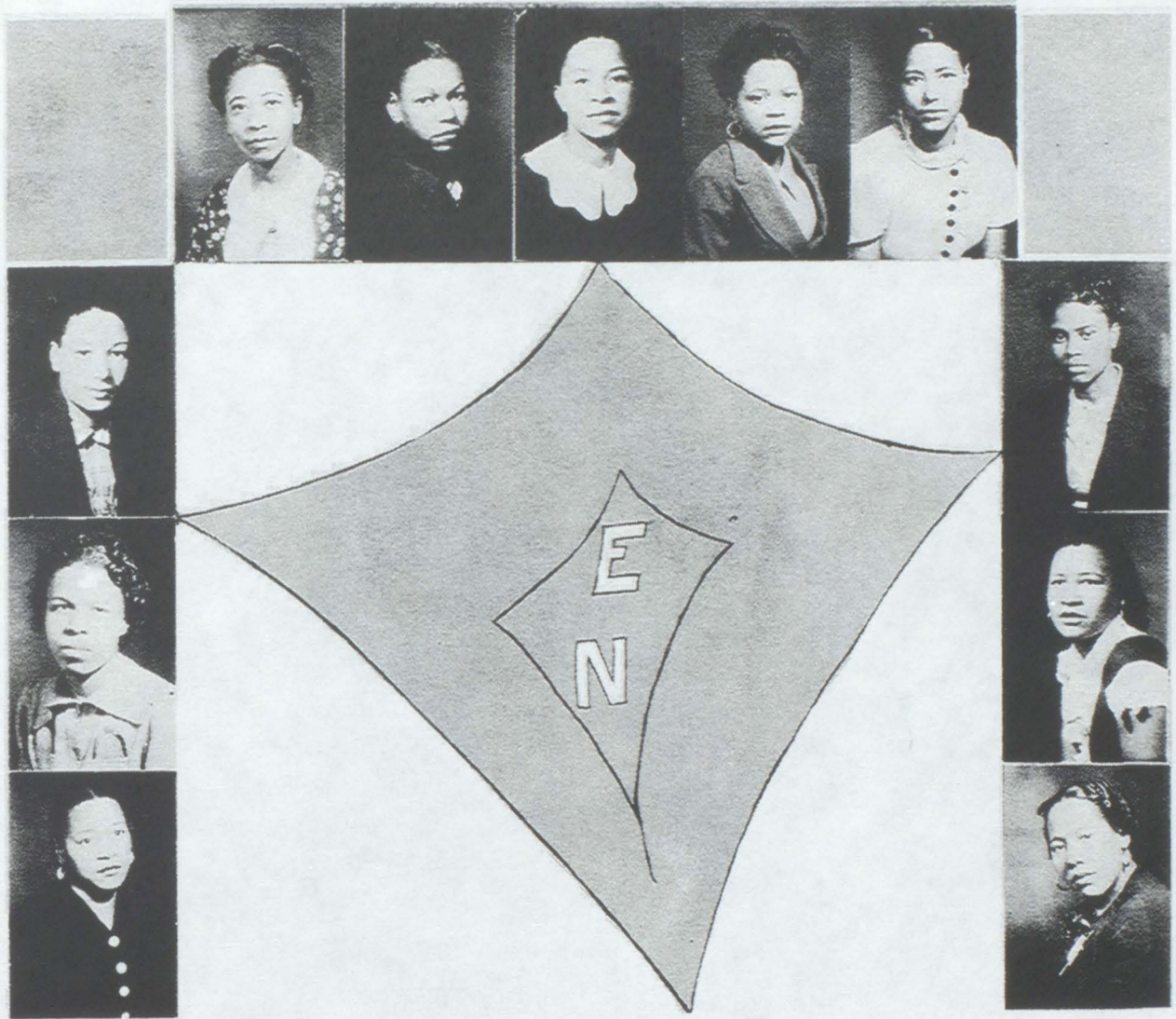
OFFICERS

President	- - - - -	Myra Jeanne Turner
Vice President	- - - - -	Goldie C. Norman
Secretary	- - - - -	Effie L. Hildreth
Treasurer	- - - - -	Mildred Johnson
Dean of Pledges	- - - - -	Mae Doris Copeland

OTHER MEMBERS

Anita Louise Allen	Ruby Jagers
Nevada K. Amos	Odelle Johnson
Ella Louise Brown	Muriel Elizabeth Jones
Jewel Carter	Velma McCormick
Minnie Pearl Corbin	Arnetta Perry
Ella V. Gross	Cazine Reece

Vivian Behn
Odessa H. Bell



ENTRE NOUS CLUB

OFFICERS

President	- - - - -	Beatrice E. Williams
Vice President	- - - - -	Mentoria Walker
Secretary	- - - - -	Imogene Pondexter
Assistant Secretary	- - - - -	Ollie Mae McDaniels
Treasurer	- - - - -	Sarah J. Moran
Historian	- - - - -	Ethel G. Alford
Pledge Mistress	- - - - -	Stella M. Burleigh
News Reporter	- - - - -	Clematine Washington
Business Manager	- - - - -	Gertrude M. Franklin

OTHER MEMBERS

Wilhemenia Starks

Mary Lee Wallace



Founded January, 1920
at Howard University

Founded December 11, 1938
Seventeen Members

ZETA PHI BETA SORORITY
LAMBDA ALPHA CHAPTER



OFFICERS

Thelma Cooper	-	-	-	-	Basileus
Senova Holbert	-	-	-	-	Anti-Basileus
Majorie Henson	-	-	-	-	Grammateus
Mary Ann Boone	-	-	-	-	Tamiouches
Zenobia R. Mills	-	-	-	-	Epistolean

MEMBERS

Willie Patterson	Rebecca Noble
Bernice McIntyre	Gay Bertha Haddox
Eva M. Bufford	Gaynelle Tolliver
Mentoria Bunn	Marietta Yarber
Estella Jaggars	Dorothy L. Williams
Ethel Burns	Leora Harmon



SPHINX CLUB

Reading From Left to Right:

Bottom Row: Richard Jones, Sergeant-At-Arms; Alonza McKenzie, Assistant Secretary and Treasurer; Frank Swain, President; La Fayette Tilford, Vice President; Thomas Johnson, Secretary; Leo Woody, Chairman, Program Committee.

Middle Row: Otis Williams, Curtis Hall, Charles "Shanghai" Weldon, Coy Franklin, Ellsworth Spears, Arthur Holt, Robert Love.

Top Row: Leander West, William Talton, Roland Kerry, and William Parker.



THE SCROLLER CLUB

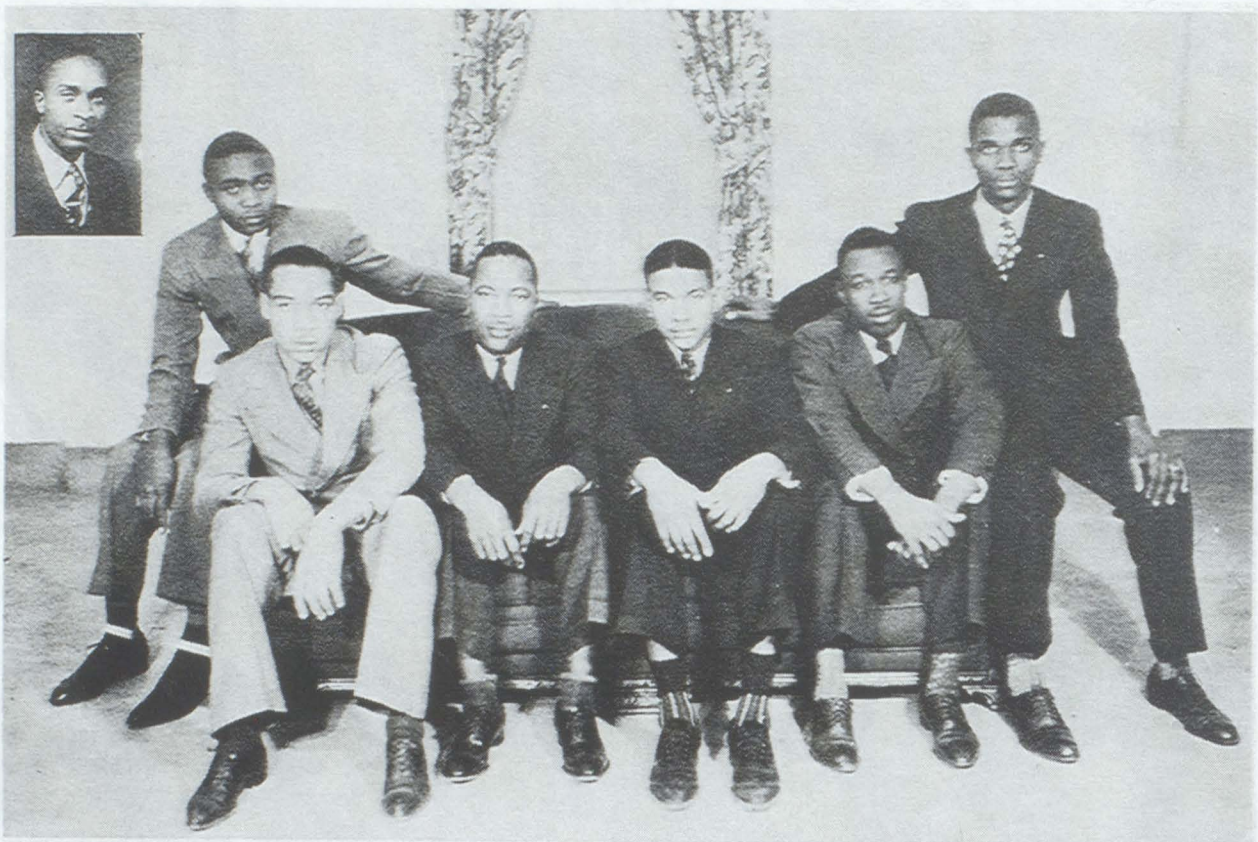
OFFICERS

- Leslie Minfield, President
- Felix McGinnis,
Vice-Pres.
- Cladius Britt, Secretary
- Russell Patterson, Treasurer
- Nathan Sams, Reporter
- Elehue Packard,
Sergeant-At-Arms

OTHER MEMBERS

- Perry Fuller
- Howard Smith
- Jason Taylor
- Thadeaus Logan





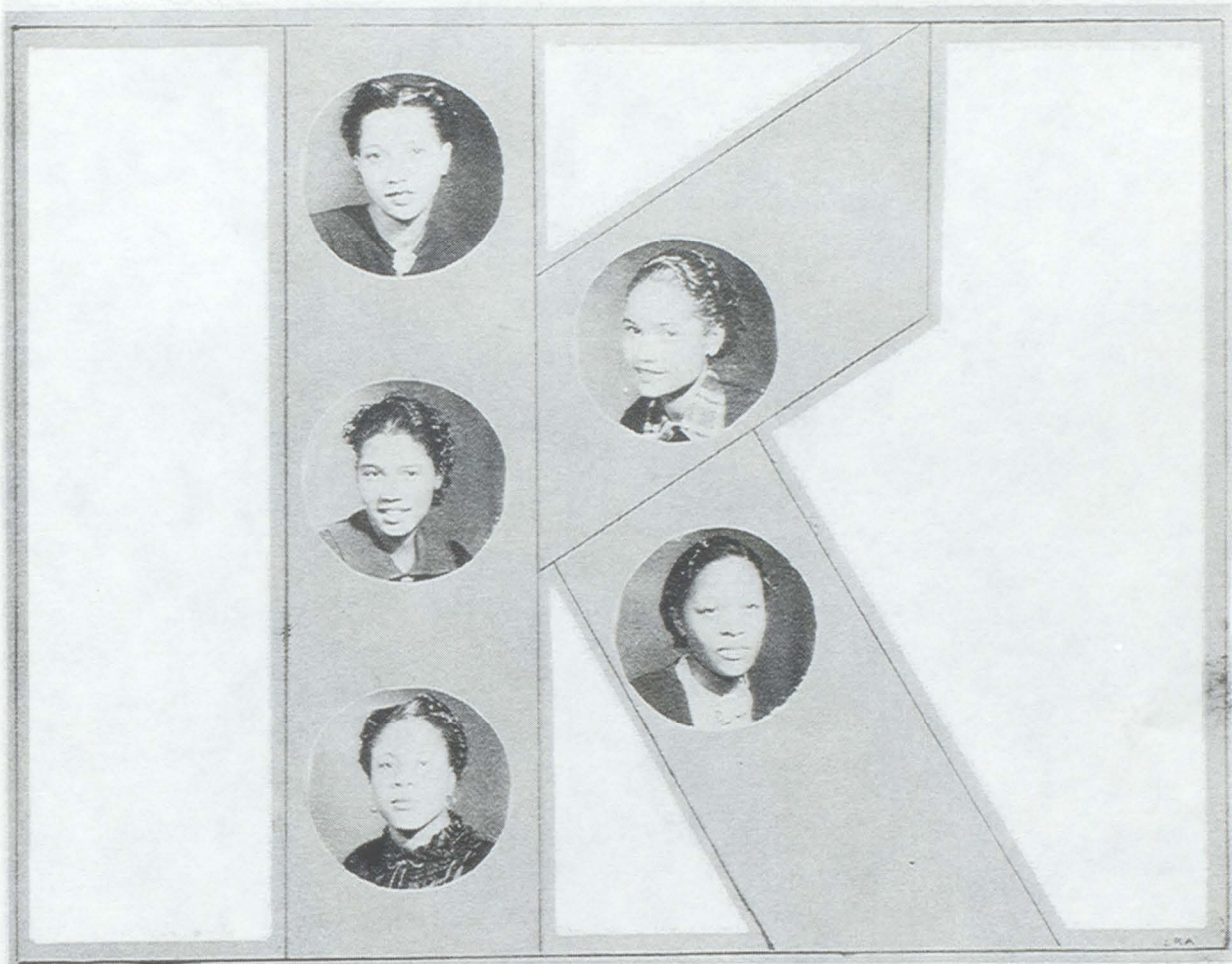
LAMPDOS PLEDGE CLUB

Reading from left to right:

- Theodus McIntosh - - - Treasurer
- William Slaten - - - - -
- Alfonza Stricklin - - - Vice President
- J. D. Graham - - - - - President
- Emmitt James - - - - - Secretary
- Fred Waters - - - - -

Alphonza Taylor (Inset)

Member not on picture:
Willard Ratliff



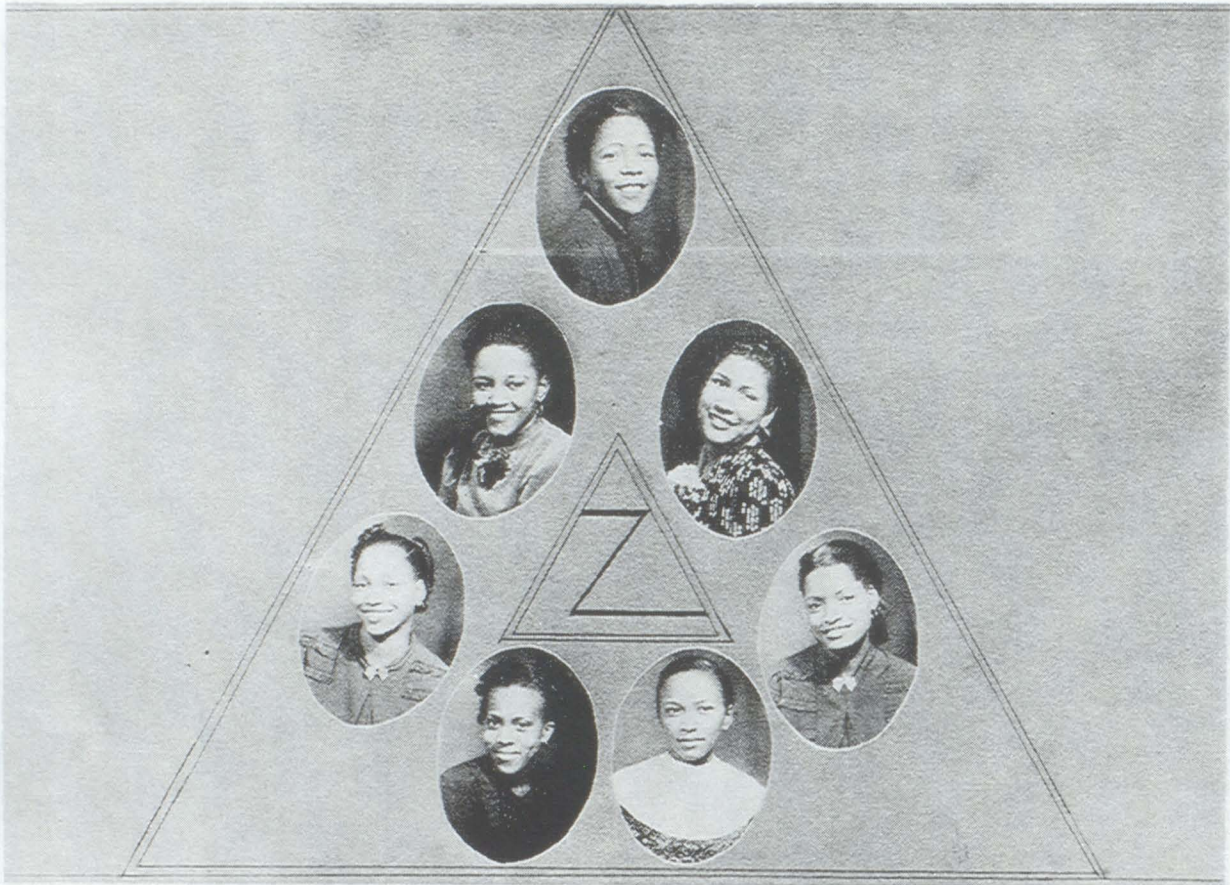
THE KEY CLUB

OFFICERS

Iznola Herndon	- - - - -	President
Larzette Golden	- - - - -	Vice President
Robbie Chappell	- - - - -	Chaplain
Eugene Chiles	- - - - -	Secretary
Virginia Washington	- - - - -	Treasurer

NEW MEMBERS NOT IN PICTURE

Electa Moore	Geraldine Courtney
Edwina Morrison	Myrtle Fegan
Noneta White	Edna Woffard



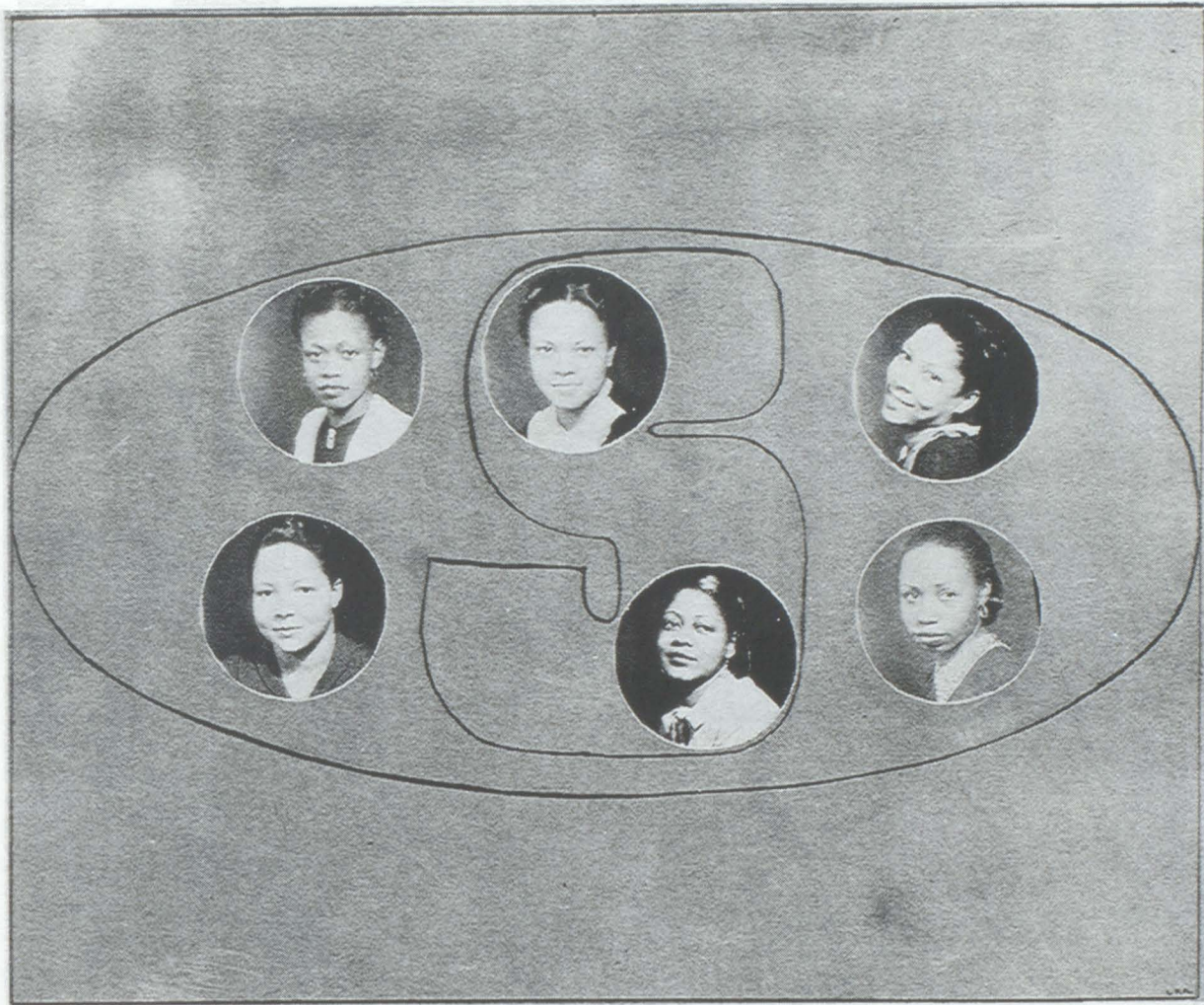
THE ANGLE CLUB

OFFICERS

Mable Joan Wilson - - - - President
 Thera Russell - - - - Vice President
 Flossie Rogers - - - - Secretary
 Vera Russell - - - - Treasurer
 Mildred Matthews - - Assistant Secretary

ROSTER

Mable J. Wilson	Wausie Cox
Flossie Rogers	Thera Russell
Vera Russell	Grace Guest
Mildred Matthews	



THE STRATA CLUB

OFFICERS

Wy'ene Yvonne Evans - - - President
 Alvah Loyce Hynson - - - Secretary
 Lottie Marie Dennis - - - Treasurer

OTHER MEMBERS

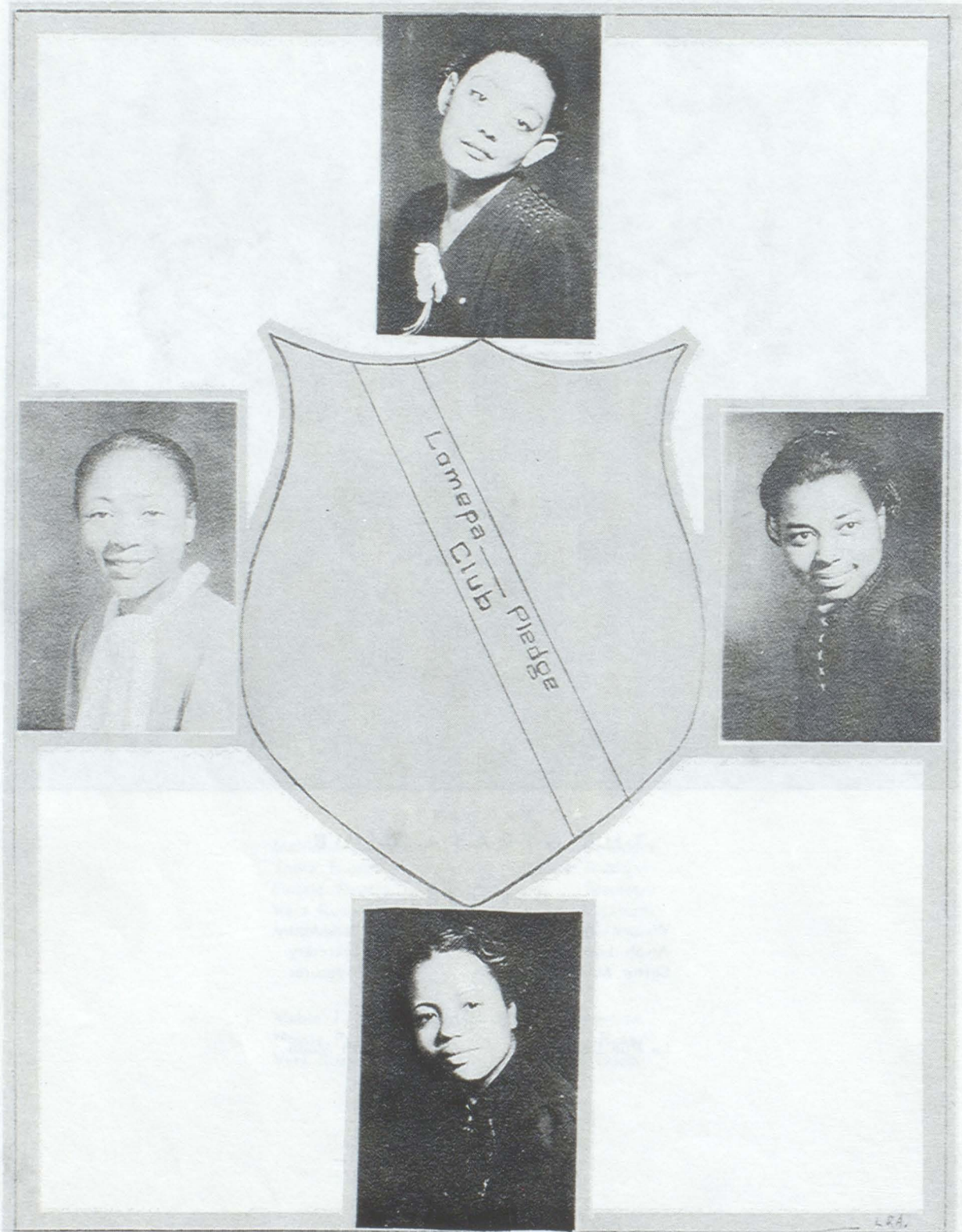
La Rue Dedmon Alice Ruth Moon
 Etta Gwinavier Evans

CLUB COLORS

Blue and Gold

CLUB MOTTO

*"We ask not for rest,
 but strength to labor on."*



THE LOMEPA PLEDGE CLUB

- Essie V. Golden - - - - - President
- Lucille Burton - - - - - Assistant Secretary
- Lydia Smith - - - - - Treasurer
- Ruth Jordan - - - - - Chairman of Committees



THE YOUNG WOMEN'S CHRISTIAN ASSOCIATION

OFFICERS

Beulah Mae Baker	-	-	-	-	-	-	-	President
Larzett Golden	-	-	-	-	-	-	-	Secretary
Janie Morris	-	-	-	-	-	-	-	Treasurer
Miss Evelyn I. Adams	-	-	-	-	-	-	-	Regional Sponsor
Mrs. Cameron	-	-	-	-	-	-	-	Advisor
Mrs. Weaver	-	-	-	-	-	-	-	Advisor
Miss Ellis	-	-	-	-	-	-	-	Advisor*

CABINET MEMBERS

Ora D. Greer	Maxine Hubbard
Cecille Evans	Navada Amos
Gertha Cullom	Evelyn Richardson
Lillie Stallworth	Anne Davis

Seated Left to Right:

Janie Morris, Cecille Evans, Ora D. Greer, Larzett Golden, Miss E. I. Adams, Beulah Mae Baker, Lillie Stallworth, Evelyn Richardson, Maxine Hubbard.

Second Row:

Mrs. Weaver, Fredonia Richardson, Florence Miles, Gertha Cullom, Grace Cullom, Mrs. Cameron, Johnie Mae Love, Estella Long, Sylvia Austin, Nevada Amos.

Third Row:

Anne Davis, Essie Golden, Be Ester Moore, Blossom Hodges, Lottie Monroe, Marie Miller, Mae Etta Foster.

*—Not in Picture.



THE YOUNG MEN'S CHRISTIAN ASSOCIATION

C A B I N E T M E M B E R S

William Hale	-	-	-	-	-	-	-	-	President
Anderson Lonian	-	-	-	-	-	-	-	-	Corresponding Secretary
Emery Jennings	-	-	-	-	-	-	-	-	Chairman Activity Committee
Lawrence Lackey	-	-	-	-	-	-	-	-	Vice President
Clyde Leathers	-	-	-	-	-	-	-	-	Recording Secretary
Leslie Himes	-	-	-	-	-	-	-	-	Chaplain*
Eugene Anderson	-	-	-	-	-	-	-	-	Treasurer
Dr. A. D. Bellegarde	-	-	-	-	-	-	-	-	Sponsor (Regional)
J. J. Seabrook	-	-	-	-	-	-	-	-	Advisor

Seated from Left to Right:

Daniel Wynn, Paul Strong, Clyde Leathers, Anderson Lonian, Dr. A. D. Bellegarde, William Hale, James McCann, Emery Jennings, Samuel Fuhr, Mazola Crossley, Clemon Ashley.

Second Row:

Hasko Ellis, James Avery, Ora Kemp, Felix McGinnis, Lawrence Lackey, Coy Franklin, J. D. Smith, Henry Elliott, Richard Jones, W. C. Moore, J. Gresham, Earnest King.

Third Row:

Jason Taylor, Elmer Jackson, Fulton Morris, Evans Fowler, Eugene Moore, Ora Ellis, George Hubbard, Francis Ellis, George Ragland, Charles Jones, Cecil Ryan, Newman Buttler, Robert Love.

*—Not in Picture.



DRAMATIC CLUB



CHORAL CLUB



MEN'S QUARTETTE
WOMEN'S SEXTETTE



ORCHESTRA



BAND

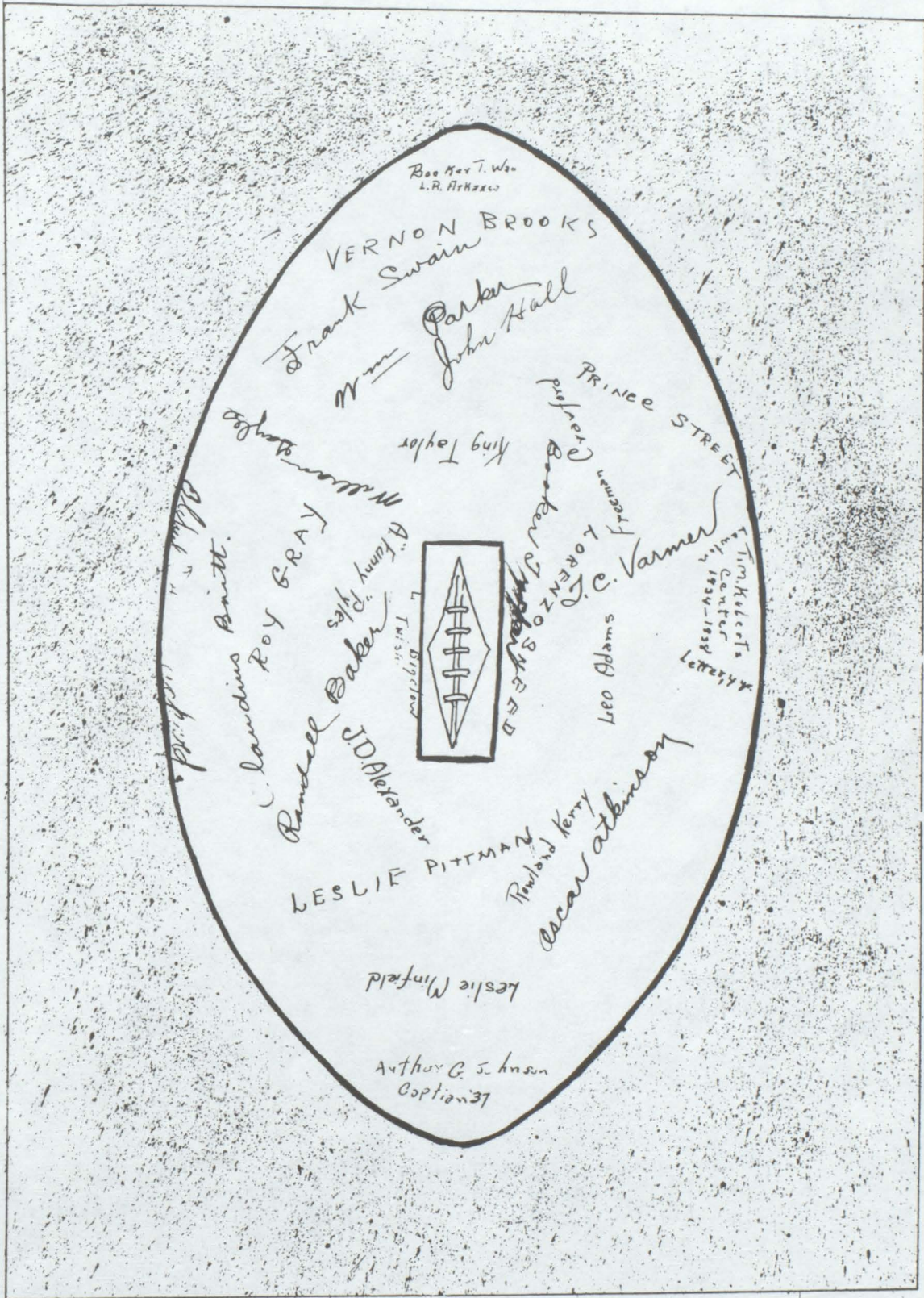
Added
Winter
Music
Photo



INDUSTRIAL CLUB



PEP SQUAD



Rev. Mr. T. W. L. R. Arkansas

VERNON BROOKS

Frank Swain
Parker
John Hall

PRINCE STREET

King Taylor

ROY GRAY



J.D. Alexander

LESLIE PITTMAN

Oscar Atkinson

Leslie Winfield

Arthur G. Johnson
Capt. '37

LEO ADAMS

L. C. Varner
Lorenz
Tim Kester's
Center
1930-1937
Lester



FOOTBALL

With the Southwestern conference growing stronger each year and already recognized as one of the strongest conferences in the country, the Lions were able to maintain their own for the first half of the season but were defeated three in a row in the closing half but even with this they emerged with a .500 rating for the season. A record that is not bad and definitely makes the Lions a team that must always be considered no matter who the adversary may be.

All games were won by a very close margin and the same may be said for those that were lost. The score sheet shows that the Lions scored 45 points to 59 for their opponents in conference games and 185 points to 71 points for their opponents in non-conference and conference games.

For attendance a new record for all years was made and an all time high was made in attendance and paid admissions to the Homecoming Game, November 13.

For the 1938 season athletic relations will be renewed with Morehouse College by opening the season (Oct. 8) with them on the Lions home field and following through with games for each week-end except Nov. 7, an open date. Making a total of five home games and three on foreign fields.



BASKETBALL

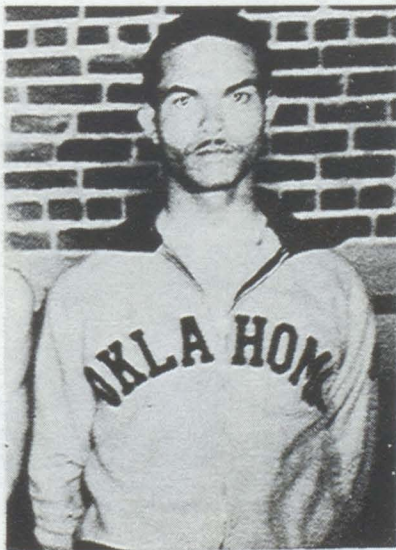
Basketball presents a better picture for the 1938 season. The Lions running true to form and early season predictions dominated the Southwestern Conference. Won every conference game and scored a clean sweep of the Southwestern conference tournament held in Pine Bluff, Ark. March 11 and 12 by defeating Bishop twice in the finals thereby bringing to Oklahoma the championship twice in a span of three years. Last year with equally as strong a team the Lions were runner-up. With this season ended a brief review of the past two seasons shows that the Lions have lost eight out of a total of thirty-eight games. This record stands as an accomplishment against the best teams that the mid-west has to offer. It is a record that speaks well for the progress that basketball has made since 1930 when Langston began competing on an expanding scale in inter-collegiate circles. The Lions' strength lies in the fact that their reputation as a clean, square and hard fighting group of players attracts the outstanding High School basketball players in Oklahoma, and this in itself speaks well to show the high level that basketball has reached in Oklahoma's High Schools.



ARTHUR JOHNSON
Football Captain, 1937



ALPHONSO PYLES
Basketball Captain, 1938



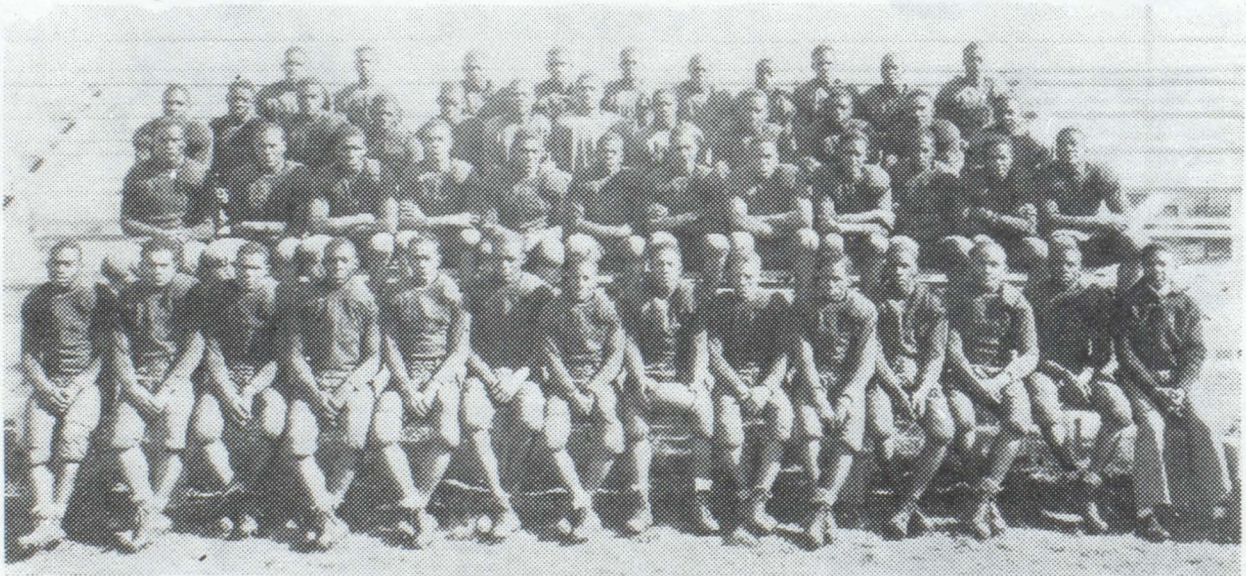
RANDALL BAKER
Track Captain, 1938



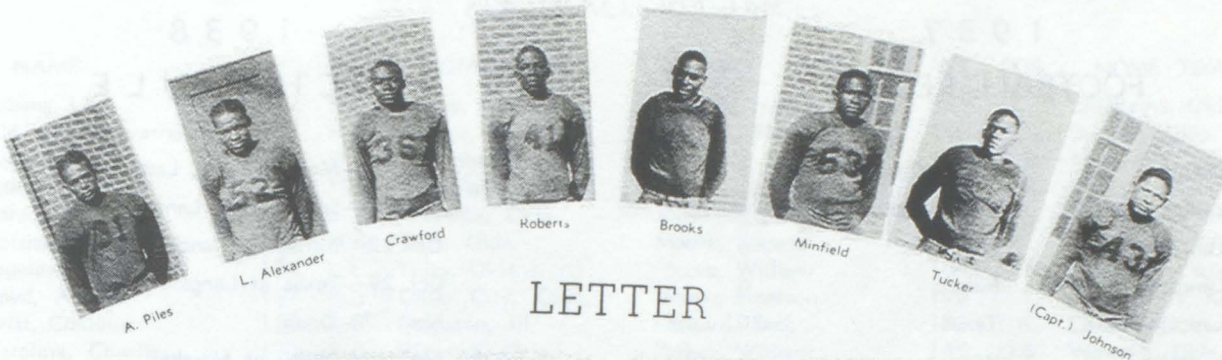
KING TAYLOR
Captain Elect, 1938



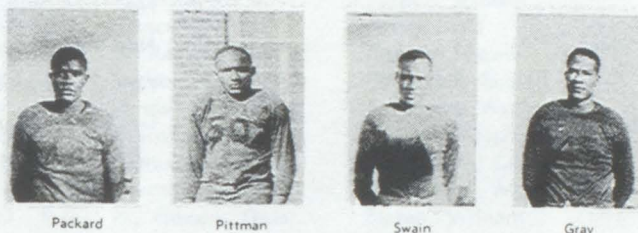
SOUTHWESTERN CONFERENCE — 1938



FOOTBALL SQUAD — 1937



LETTER



MEN



1937



Maxie (Trainer)

C. F. Gayles - - - - - Coach
 W. Slaughter - - - - - Asst. Coach
 R. B. Welch - - - - - Secy.-Pub. Director



Webb (Mgr.)



1937
FOOTBALL RECORD

Langston	68	K. C. Collegians	6
Langston	72	Sam Houston	0
Langston	7	Southern	6
Langston	9	Bishop	6
Langston	13	Texas	20
Langston	7	Wiley	0
Langston	9	Prairie View	13
Langston	0	Xavier	7
Langston	0	Arkansas State	13

1938
SCHEDULE

Oct. 8—Morehouse at Langston.
Oct. 15—Southern at Langston.
Oct. 22—Bishop at Langston.
Oct. 29—Texas at Langston.
Nov. 7—Open.
Nov. 12—Wiley at Marshall.
Nov. 19—Prairie View at Langston.
Nov. 24—Xavier at New Orleans.
Dec. 3—Arkansas State at Pine Bluff.



1938
BASKETBALL RECORD

Langston	54	Alumni	24
Langston	32	Xavier	31
Langston	36	Xavier	42
Langston	45	Hunter Ind.	29
Langston	58	Pond Creek	26
Langston	38	Lincoln	47
Langston	33	Lincoln	44
Langston	58	Lincoln	36
Langston	40	Lincoln	41
Langston	49	Pond Creek	34
Langston	58	Wiley	28
Langston	43	Wiley	24
Langston	40	Bishop	38
Langston	47	Bishop	40
Langston	31	Wiley	26
Langston	50	Bishop	41
Langston	33	Chicago Collegians	44



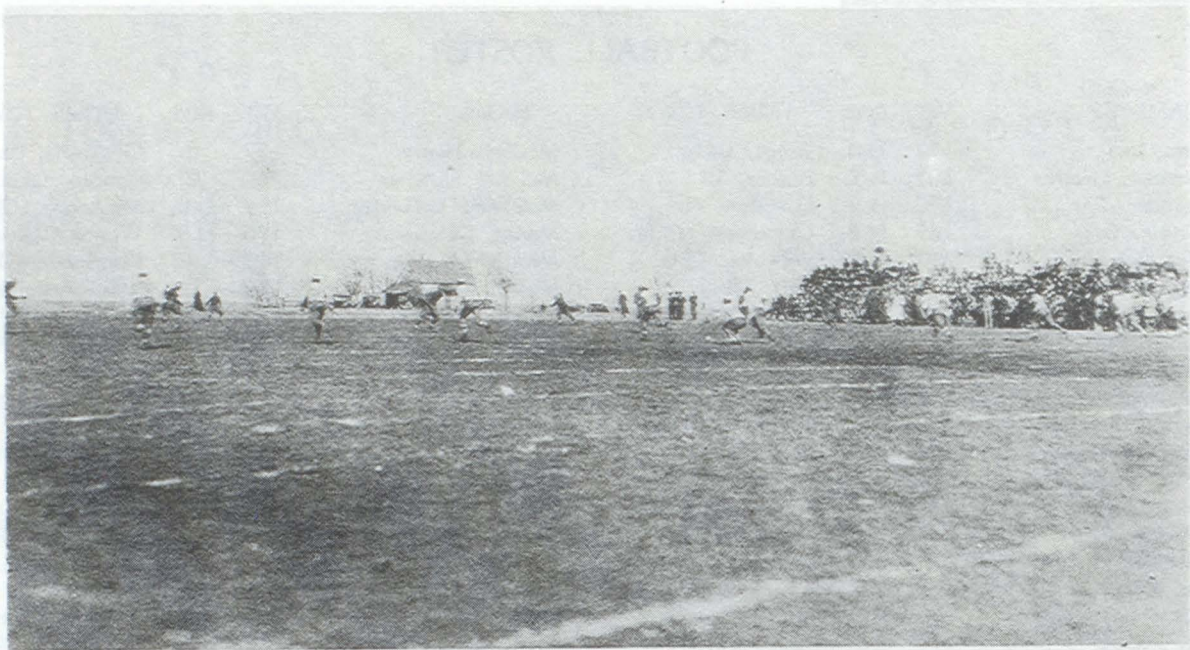
FOOTBALL ROSTER

NAME	WT.	POS.	HOME TOWN	NAME	WT.	POS.	HOME TOWN
Adams, Leo	172	H.B.	Beggs, Okla.	McCary, Henry	187	C.	Chickasha, Okla.
Alexander, Laverne	207	R.T.	Aurora, Ill.	McCoin, Fletcher	160	C.	Duncan, Okla.
Alexander, Ben	170	H.B.	Evanston, Ill.	McGinnis, Lafayette	155	Q.B.	Muskogee, Okla.
Atkinson, Oscar	165	H.B.	Okmulgee, Okla.	Mence, George	186	H.B.	Wewoka, Okla.
Banks, Leodus	212	L.T.	Wewoka, Okla.	Minifield, Leslie	193	L.G.	Kingfisher, Okla.
Bettis, Nathaniel	135	H.B.	Taft, Okla.	Moore, Eugene	174	C.	Kingfisher, Okla.
Bigelow, Limuel	176	L.E.	Tulsa, Okla.	Moore, William	164	H.B.	Ardmore, Okla.
Boyd, Arthur	197	R.G.	Okla. City, Okla.	Morris, Emerson	179	R.T.	Kansas City, Kans.
Britt, Claudius	158	Q.B.	Evanston, Ill.	Packard, Jack	178	L.G.	Lawton, Okla.
Carolina, Charlie	170	R.E.	Wewoka, Okla.	Parker, William	145	Q.B.	Wewoka, Okla.
Crawford, Freeman	170	R.G.	Crescent, Okla.	Peevy, Carl	151	Q.B.	Bristow, Okla.
Deloney, Lawrence	168	H.B.	El Reno, Okla.	Pittman, Leslie	189	L.G.	Wewoka, Okla.
Dulan, Narva	170	Q.B.	Luther, Okla.	Patterson, Russell	168	H.B.	Aurora, Ill.
Franklin, Grant	181	R.T.	Ponca City, Okla.	Patterson, Warren	172	L.G.	Okla. City, Okla.
Gayles, William	165	H.B.	Evanston, Ill.	Reaves, Joseph	135	Q.B.	Chickasha, Okla.
Gatewood, Harry	210	L.T.	Okmulgee, Okla.	Richardson, Claude	160	L.E.	Evanston, Ill.
Gross, Coleridge	171	L.E.	Wewoka, Okla.	Roberts, T. M.	182	C.	Lawton, Okla.
Hall, John	190	R.G.	Ft. Gibson, Okla.	Slaten, William	182	R.G.	Anadarko, Okla.
Hart, Albert	170	R.E.	Beggs, Okla.	Scott, Eugene	151	H.B.	McAlester, Okla.
Hibler, Herbert	164	L.E.	Guthrie, Okla.	Sloss, Curley	172	L.G.	Tulsa, Okla.
Hines, Ralph	178	L.T.	Drumright, Okla.	Shields, Raymond	147	C.	Kansas City, Kans.
Hollins, M. C.	153	H.B.	Drumright, Okla.	Swain, Frank	180	R.G.	McAlester, Okla.
Holloway, Charlie	184	R.E.	Tulsa, Okla.	Sneed, Lorenzo	155	H.B.	Ft. Worth, Texas
Hopwood, Tyler	158	H.B.	Seminole, Okla.	Taylor, King	165	H.B.	Chickasha, Okla.
Johnson, Arthur (Capt.)	173	L.E.	Ardmore, Okla.	Tucker, Booker	190	R.E.	Haskell, Okla.
Johnson, R. G.	178	R.G.	Seminole, Okla.	Varner, T. C.	124	H.B.	Ardmore, Okla.
Jackson, Bozie	177	R.G.	Wewoka, Okla.	Walker, Roy	169	R.E.	Anadarko, Okla.
King, Hershall	157	H.B.	Boley, Okla.	Waugh, Booker	165	R.E.	Little Rock, Ark.
Kerry, Rowland	150	Q.B.	Tulsa, Okla.	Welch, Jimmie	169	L.E.	Hillsboro, Texas
Lewis, Arthur	165	L.G.	Crescent, Okla.	Brooks, Vernon	175	C.	Wewoka, Okla.
Lyle, Lafayette	158	Q.B.	Holdenville, Okla.	Pyle, Alphonzo	168	R.E.	Tulsa, Okla.
Mackey, Odest	177	L.G.	Beggs, Okla.	Gray, Roy	178	L.T.	Tulsa, Okla.



BASKETBALL ROSTER

NAME	CLASSIFICATION	NO. YRS. PLAYED
Alphonso Pyle (Capt.)	Jr.	2
Charley Webb	Sr.	3
Charles Weldon	Soph.	2
George Homer	Soph.	1
Charles Burton	Freshman	0
Joseph William Haynes	Soph.	1
Randall Baker	Sr.	3
Freeman Crawford	Jr.	2
Roland Kerry	Soph.	1
Russell Patterson	Soph.	1
Leo Adams	Soph.	1
Leodus Banks	Freshman	0
Steve Kinney	Freshman	0
David Scott	Freshman	0
Hershell King	Freshman	0
Curley Sloss	Freshman	0



THE KICK-OFF



SCENES FROM THE HOMECOMING
WILEY VS. LANGSTON

The Staff Writes

Dear Reader:

To the Administration and Student Body of
this University:

We, the members of the Annual Staff, greatly
appreciate your loyal cooperation given us in the
editing of this publication.

This the second edition of the "Lion" in the
history of the University is not one without faults.
With an apology for our faults we leave the rest of
our efforts to those who are to follow so that they
may steer clear of those obstacles which mark for
our mistakes. It has been our aim to depict life
as it is found on the campus. By close and careful
observation of the pages that you have turned, many
milestones of progress of our ever and fast
growing Langston University are clearly found.

"The Staff"

Rich. T. Strong (Editor) Emery N. Jennings
Clyde M. Leathers (Treasurer) Ruthie L. Hubbert
F. Sher A. Johnson (Bus. Mgr.) Beville V. Evans
Minnie Paul Corbin (Secy.) Henry Jones
John F. D. Wasee - Wm. H. Hale
Ernest Hart Jesse T. Austin



Chem. Boys



The Snow Matters



Brendell of The Gang



The Three Musketeers



Are They Crabs?



See You, Tack



Let's go fishing



Just a Sweetheart



Oh- I'm so HAPPY



Shame face



So many memories



Real Lovers



Cute- Hixt he?



I mean it



The Tacks - Sharp



HAPPY



WIT AND HUMOR

Dean Tatum—Gatewood, I understand you found a man in your wife's bedroom the other night.

Gatewood—Oh that was nothing, he was a W.P.A. man, and everybody knows they never do nothing.

Father—I had a note from your teacher today, son.

Son—O.K. dad, I won't tell mother.

Patient—"Doc, I asked that nurse to put a hot water bath to my feet and she walked away."

Doctor—"Why, you couldn't expect her to do that, she's the head nurse."

Patient—"Well, send me the foot nurse."

Lecturer—Three thousand four hundred and twenty elephants were needed last year to make billiard balls.

Strickland—How do they train the beast to do such delicate work?

A student from Langston was in a stationery shop one day in Guthrie, and asked for some floor wax.

Waiter—"I'm sorry, sir, we sell only sealing wax."

Student—"Don't try to be funny, who ever heard of anyone waxing a ceiling?"

First Roommate—Is your best girl friend busy tonight?

Second Roommate—No.

Third Roommate—Well call her up and I'll get another old hag and we'll go slumming.

Traffic Cop—"Come on, what's the matter with you?"

Rufus Johnson—"I'm well thanks, but my engine's dead."

Night Watchman—I've just shot a dog.

Carpenter—Was he mad?

Night Watchman—Well, he wasn't well pleased.

Preacher—I want to thank you all for the kind and generous presents that so many of you have given me and the services on this Easter Sunday—and what pleased me most was when little Evelyn Tinner walked up the aisle and laid an egg on the altar.

Instructor—"Little boy, why aren't you in school?"

Little Boy—"Hell, Lady, I ain't but three years old."

Botany Teacher—Have you heard how the old rose greets the young rose?

Student—Yes, H'ya bud.

I understand you are looking for a new maid.

Yes, the last one handled China like Japan.

Teacher—Why was Solomon the wisest man in the world?

Susie—Because he had so many wives to advise him.

Teacher—Your mouth reminds me of a river.

Student—How?

Teacher—It runs all the time.

<p>CAMPUS GROCERY MEATS & NOTIONS</p> <p>J. Scott Prop.</p> <p>LANGSTON, OKLA.</p>	<p>DINE ^{AND} DANCE AT CREAMY'S JOLLY TAVERN</p> <p>LANGSTON, OKLA.</p>	<p>THE FAIRMONT CREAMERY CO.</p> <p>ESTABLISHED 1884 QUALITY-BUTTER-EGGS CHEESE-POULTRY</p> <p>GUTHRIE, OKLA.</p>
<p>DELANEY'S GROCERY AND MARKET</p> <p>GUTHRIE, OKLA PHONE 453</p>	<p>ANDERSON CLEANERS</p> <p>OWNED AND OPERATED BY STUDENTS</p> <p>EUGINE "POET" ANDERSON LANGSTON, OKLA.</p>	<p>SCHULER FRUIT COMPANY</p> <p>DELICIOUS FRUITS</p> <p>GUTHRIE, OKLA.</p>
<p>GUTHRIE ICE COMPANY</p> <p>GUTHRIE, OKLA</p>	<p>PHONE 1431 RES PHONE 6048</p> <p>HATS-EXCLUSIVELY-HATS!</p> <p>WE MAKE THEM-BLOCK ^{AND} CLEAN THEM</p> <p>HATS-JUST HATS</p> <p>M.C. GORDON PROP.</p> <p>201 S. SECOND MUSKOGEE, OKLA.</p>	
<p>REASONABLE PHONE 2611 RATES</p> <p>PEOPLES HOTEL ^{AND} CAFE</p> <p>N. FULLER PROP.</p> <p>316 N. 2ND STREET MUSKOGEE, OKLA.</p>		<p>218 N. SECOND</p> <p>JONES DRUG STORE</p> <p>DRUGS ^{AND} DRUG SUNDRIES</p> <p>MUSKOGEE, OKLA.</p>

<p>220 2nd ST. PHONE 415 MIDWAY HAT SHOP HATS CLEANED, BLOCKED, REPAIRED SUITS CLEANED AND PRESSED C. D. MARTIN AND SON OWNERS MUSKOGEE, OKLA.</p>	<p>SHOE REPAIRING NEATLY DONE WHILE YOU WAIT NEW STATE SHOE SHOP 111 COURT ST. PHONE 3611 MUSKOGEE, OKLA.</p>
<p>113 SOUTH SECOND T. J. ELLIOTS THE HOUSE OF QUALITY MERCHANDISE THE LARGEST AND OLDEST NEGRO CLOTHIER'S IN AMERICA MUSKOGEE OKLA.</p>	<p>CHICKEN DINNERS ARE SOMETHING TO GROW ABOUT BARBECUE MEATS MY SPECIALTY JIM YOUNG 319 N. 2nd PHONE 4618 MUSKOGEE, OKLA.</p>
<p>BUS. PHONE 1714 O. C. WILLIAMS PROP. WILLIAMS CLEANERS SATISFACTION GUARANTEED OKLAHOMA'S LARGEST NEGRO CLEANERS 321 NORTH SECOND ST. MUSKOGEE OKLA.</p>	<p>GRANGER FUNERAL HOME 812 EMPORIA MUSKOGEE, OKLA. MR. AND MRS. R. L. GANGER PHONE 596</p>
<p>TED DUNHAM OWNER 4-SQUARE LUMBER DUNHAM-PRICE LUMBER PHONE 278-274 GEORGE FUNNELL Mgr. SEE US FOR QUALITY BUILDING MATERIAL</p>	<p>ROLAND PRICE OWNER MARTIN SENIOR PAINTS VARNISHES ENAMELS CONOCO GAS-OILS CIGARETTES SODA CANDIES UNIVERSITY SERVICE STATION PROPTS. JIMMIE TAYLOR M. C. ALLEN</p>
<p>FIRST NATIONAL BANK STRENGTH-SAFETY-COURTESY M. E. FRUIN PRES. COYLE, OKLA.</p>	<p>THESE PICTURES WERE MADE BY RANDLE'S STUDIO TULSA OKLA. PHONE 20281 GREENWOOD</p>

By L. K. A.

Louise Jonas
R. 2, Box 12
Wagoner, Okla.

Dear Tess:
It's was grand
being a roommate
7 years. Don't forget
the checker a friend
a friend
Missor Grant
523 E. Hwy 27
Tulsa, Okla.

Dear Tess.
Autographs T'is nice to be
sweet at all
times as you
are. I have en-
joyed knowing you

Lovingly
Fal.

411 S. Cheek
Claremore

Dear Tess:
"Beware!"
a friend,
Heta W. Ward
Box 343
Boley, Okla

