

1959

The Lion 1959

Langston University

Follow this and additional works at: http://dclu.langston.edu/archives_yearbooks_pre1960

Recommended Citation

Langston University, "The Lion 1959" (1959). *LU Yearbooks, Pre-1960*. Book 5.
http://dclu.langston.edu/archives_yearbooks_pre1960/5

This Book is brought to you for free and open access by the LU Yearbooks at Digital Commons @ Langston University. It has been accepted for inclusion in LU Yearbooks, Pre-1960 by an authorized administrator of Digital Commons @ Langston University. For more information, please contact jblewis@langston.edu.

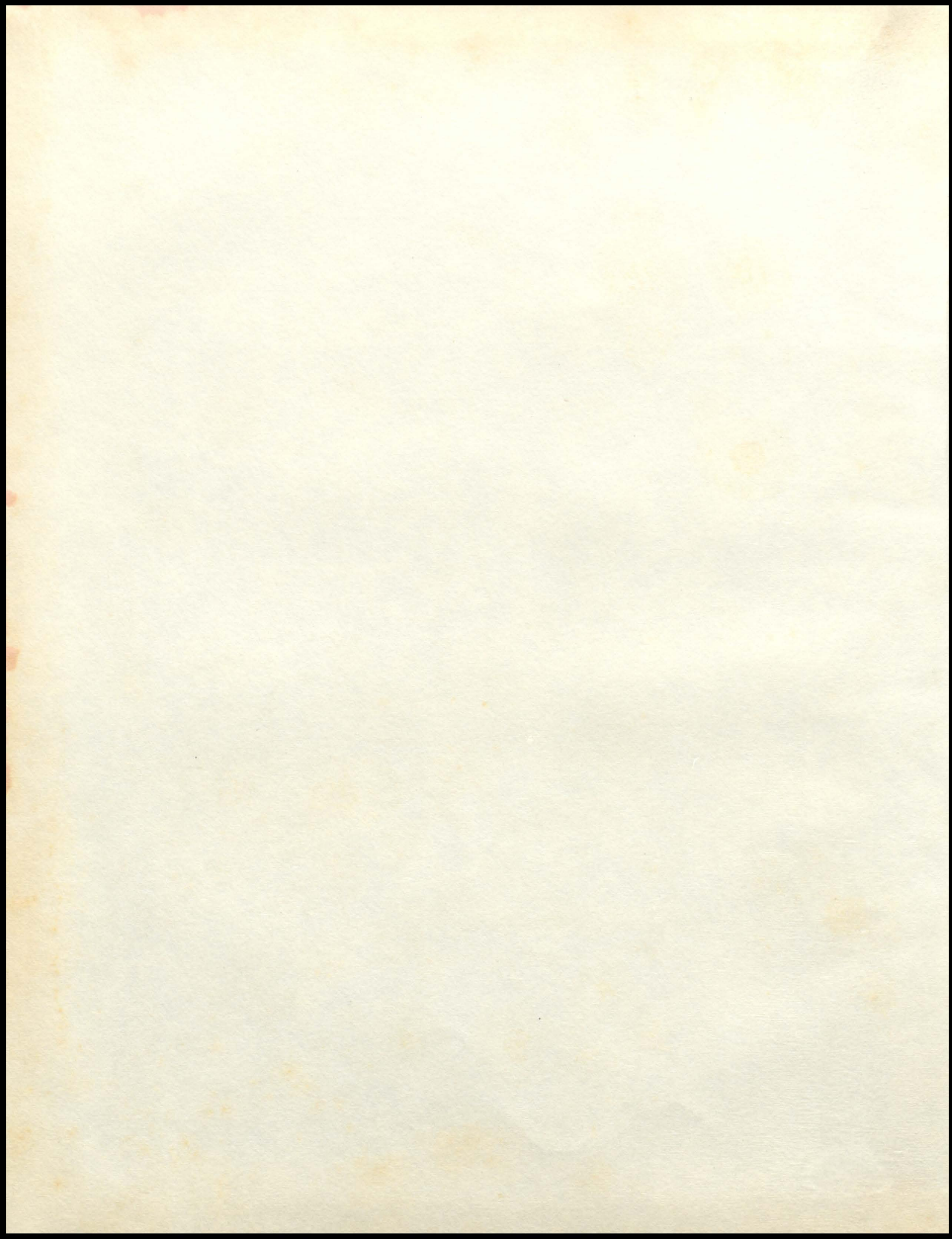
THE LION

1 9 5 9









The Senior Class
of
Langston University
Proudly Presents



Langston University

Langston University, situated on a beautiful hill overlooking a vast expansion of open prairie, was established March 12, 1897, by Act of Territorial Council and House. The College, as well as the all-Negro town on the edge of which it is located, was named for the famous Negro leader, John Mercer Langston, who died in 1897.

Classes began in the fall of 1898 under the supervision of Dr. Inman E. Page, the university's first president and a faculty of seven.

Although officially named the Colored Agricultural and Normal University, the institution has been popularly known as Langston University since it was founded. However, the name was not officially changed until 1941 at which time the legislature (at the request of Dr. G. L. Harrison, President) passed a bill changing the name to Langston University.

During his life time John M. Langston was a symbol of the highest type of educational leadership. He attended Oberlin College and for many years practiced law in the city

of Oberlin. He served for eleven years as member of the board of education in this famous Ohio city and was twice elected to its governing council. His deep interest in the education of his race is evidenced by the many positions of leadership he accepted in connection with it.

Presidents of the University: Inman E. Page, 1898—1915; Issac B. McCutcheon, 1915—1916; John M. Marquess, 1916—1923; I. W. Young, 1923—1927; Z. T. Hubert, 1927—1931; I. W. Young, 1931—1935; J. W. Sanford, 1935—1939; A. L. Turner, 1939; G. L. Harrison, 1939—

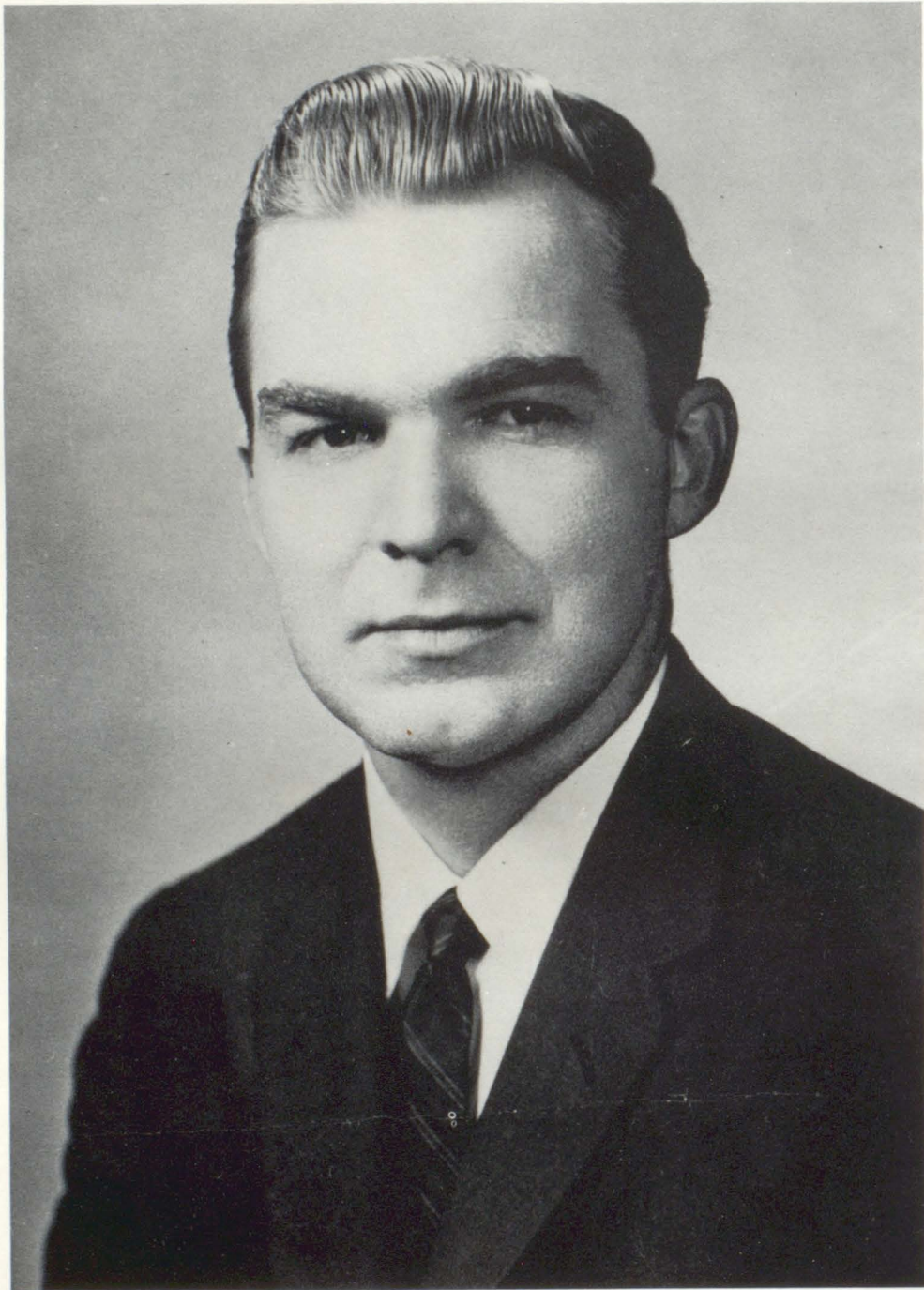
Since May 1954, Langston University, along with all other state supported colleges, is open to qualified students of all races.

Langston University's continuous progress is the largest and most influential reminder of the life and achievements of these worthy men.

*This Yearbook is....
Dedicated*



Oklahoma



J. HOWARD EDMONDSON
Governor, State of Oklahoma

OKLAHOMA STATE REGENTS
FOR HIGHER EDUCATION

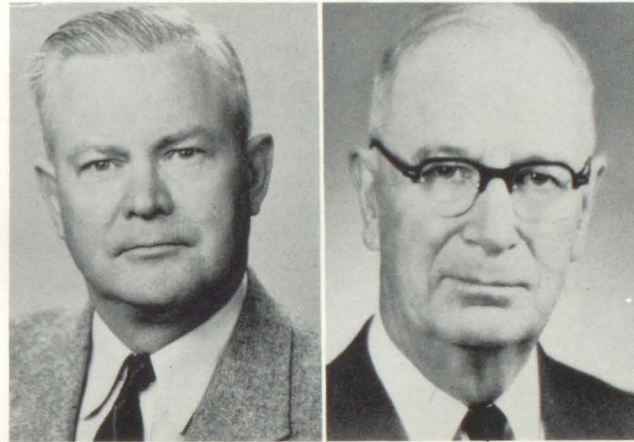
John Rogers, Chairman
Tulsa

Clee O. Doggett, Vice Chairman
Cherokee



Wharton Mathies, Secretary
Clayton

S. A. Bryant
Assistant Secretary
Cushing



William D. Little
Ada

Guy Harris
Ardmore

Robert F. Allee
Hammon



Julius H. Johnson
Lawton

Claude Chambers
Seminole

ADMINISTRATIVE OFFICERS (not pictured)

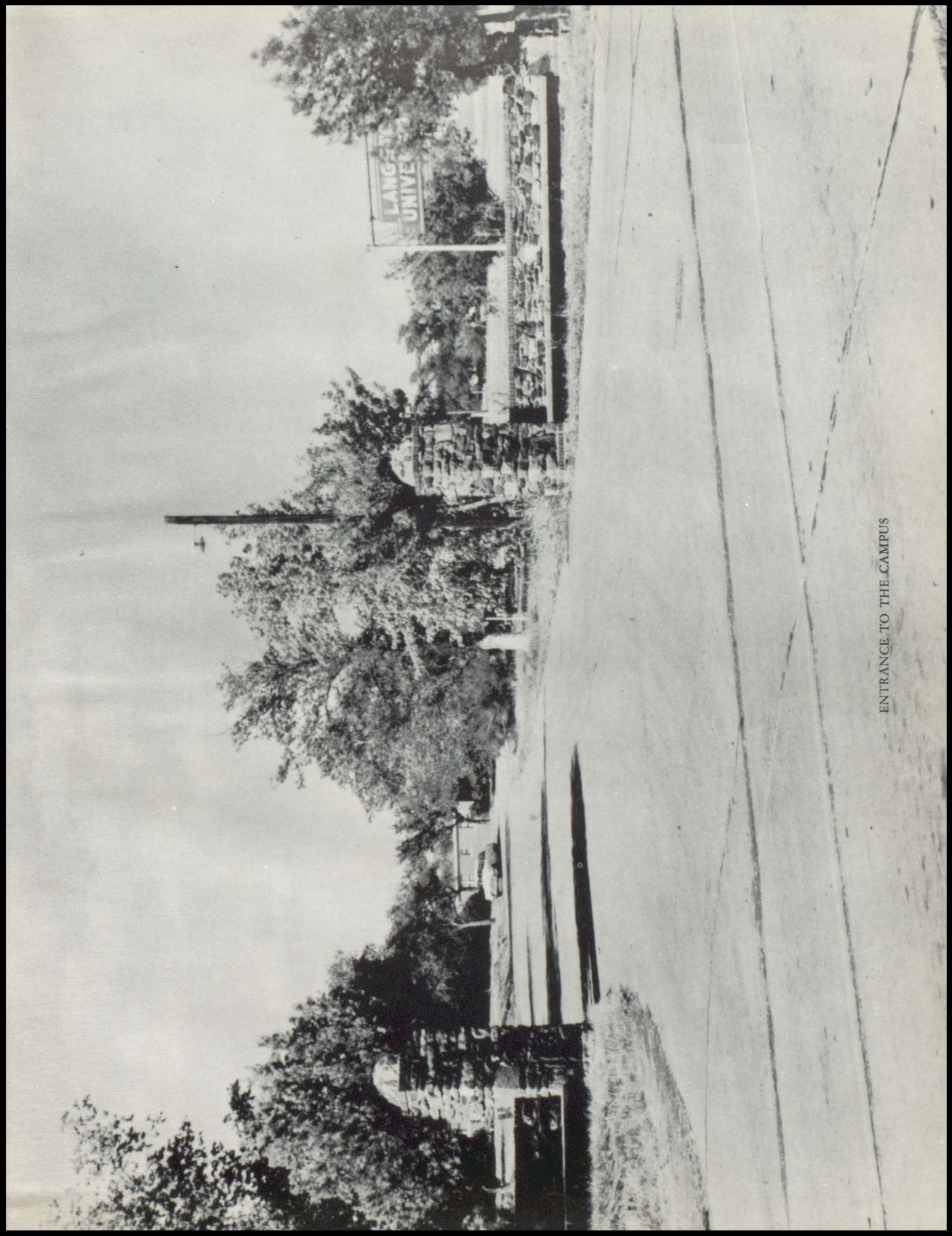
M. A. Nash, Chancellor, State Capitol
Oklahoma City

T. G. Sexton, Administrative Assistant
Oklahoma City

Board of Regents For Oklahoma A & M Colleges



Seated: Left to right, O. L. Lackey, Chairman; W. R. Williams, Vice Chairman; P. E. Harrill, Secretary; and Elmer Harber. STANDING: Fred G. Drummond; Harold Hutton; Roy T. Nell; Earl Russell; Forest McIntire, Administrative Assistant. Not present—R. T. Stuart.



ENTRANCE TO THE CAMPUS

Editor's Message



The Lion Staff is happy to present the 1959 edition of "The Lion." We have striven to capture the many ideas and memories that will remain in the lives of all Langstonites, for many years.

As you turn the pages of "The Lion," you will see a cross-section of how students of Langston University have lived and learned.

To the parents of the Seniors, to whom this book is dedicated, I, along with the Lion Staff, wish to thank you for your untiring efforts, because we know that without your support and sacrifices our achievements would not have been possible.

On behalf of the Lion Staff and myself, I wish to thank all persons who have contributed in making this "Year-book" a success. May it be a SYMBOL of the spirit of Langston, in our minds and hearts, for years to come.

Sincerely yours,

A handwritten signature in cursive script that reads "Herman L. McKinney". The signature is written in dark ink and is positioned above the printed name.

Herman Lloyd McKinney
Editor-in-chief

Administration



The President's Message

TO THE STUDENTS, FACULTY, ALUMNI AND
FRIENDS OF LANGSTON UNIVERSITY

I wish to take this opportunity to extend greetings and best wishes to the faculty and staff, the alumni, the students and the many friends of Langston University.

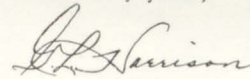
I wish also to take this means of expressing my sincere thanks to the staff of the Langston Yearbook for 1959. These young people, along with the sponsor and co-sponsor, should be commended for their untiring efforts in working out such a fine publication.

Langston University, a Land-Grant Institution, exists for the purpose of promoting through instruction the practical applications of knowledge to specific life situations. The objectives are: 1. To provide instruction and experience for improved cultural background, health, balanced personality, and normal social adjustment. 2. The preparation of teachers for those branches of service which meets the common demands of the state. 3. To develop definite skills which enable those taught to attain greater economic freedom. 4. To provide preprofessional backgrounds. 5. To promote research directed toward solving individual and group problems.


The success of an institution must depend largely upon the competency of its faculty, the loyalty of its alumni, the alertness of its students, and the cooperativeness of its friends. The Administration should like to suggest that each of the above mentioned groups make a self-analysis to determine whether or not they meet the qualifications.

Again I want to wish the utmost success for the senior class of 1959, as each member becomes a staunch and faithful alumnus of Langston University.


Sincerely yours,



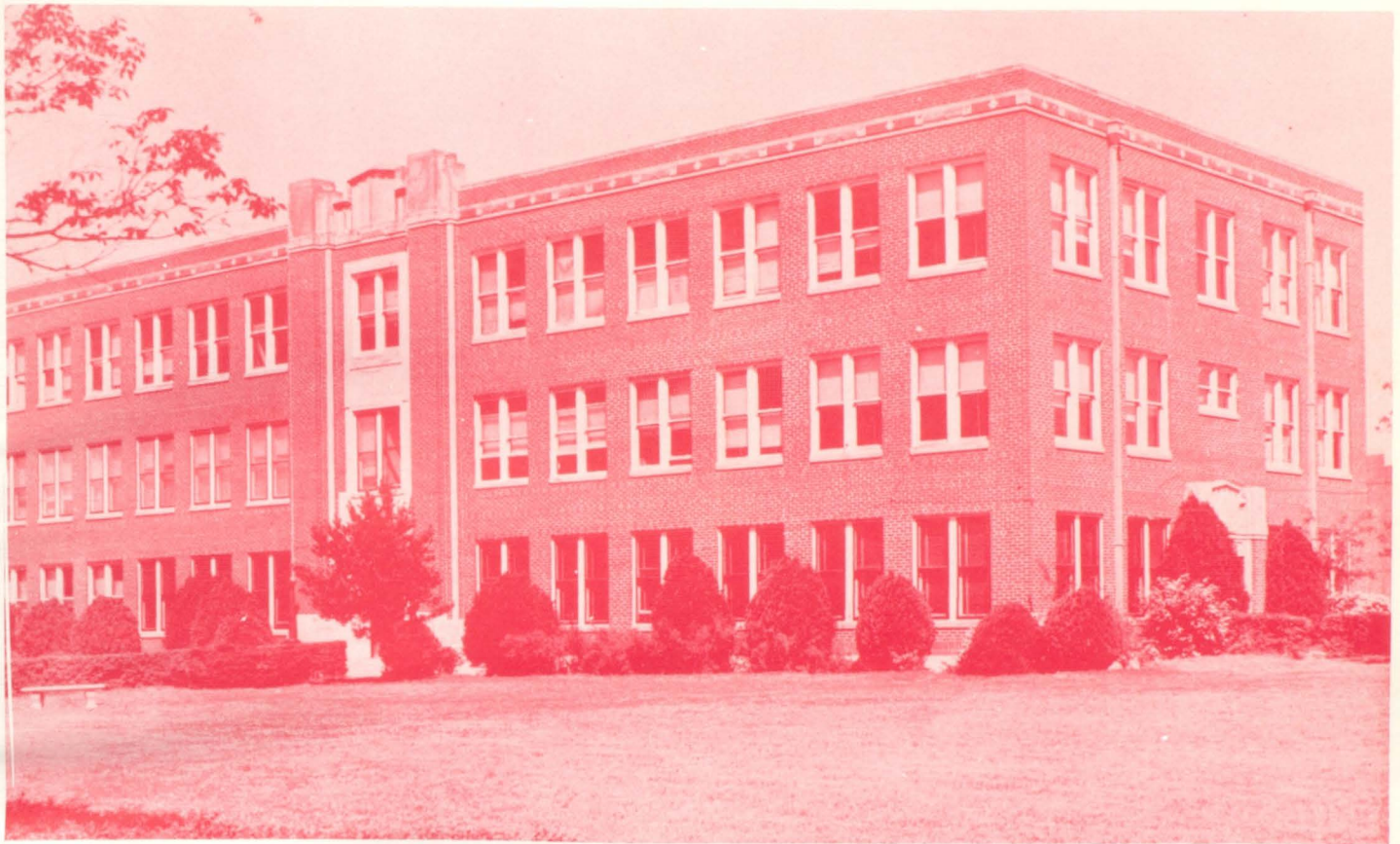
G. L. Harrison
President



G. L. HARRISON
President, Langston University



G. LAMAR HARRISON LIBRARY

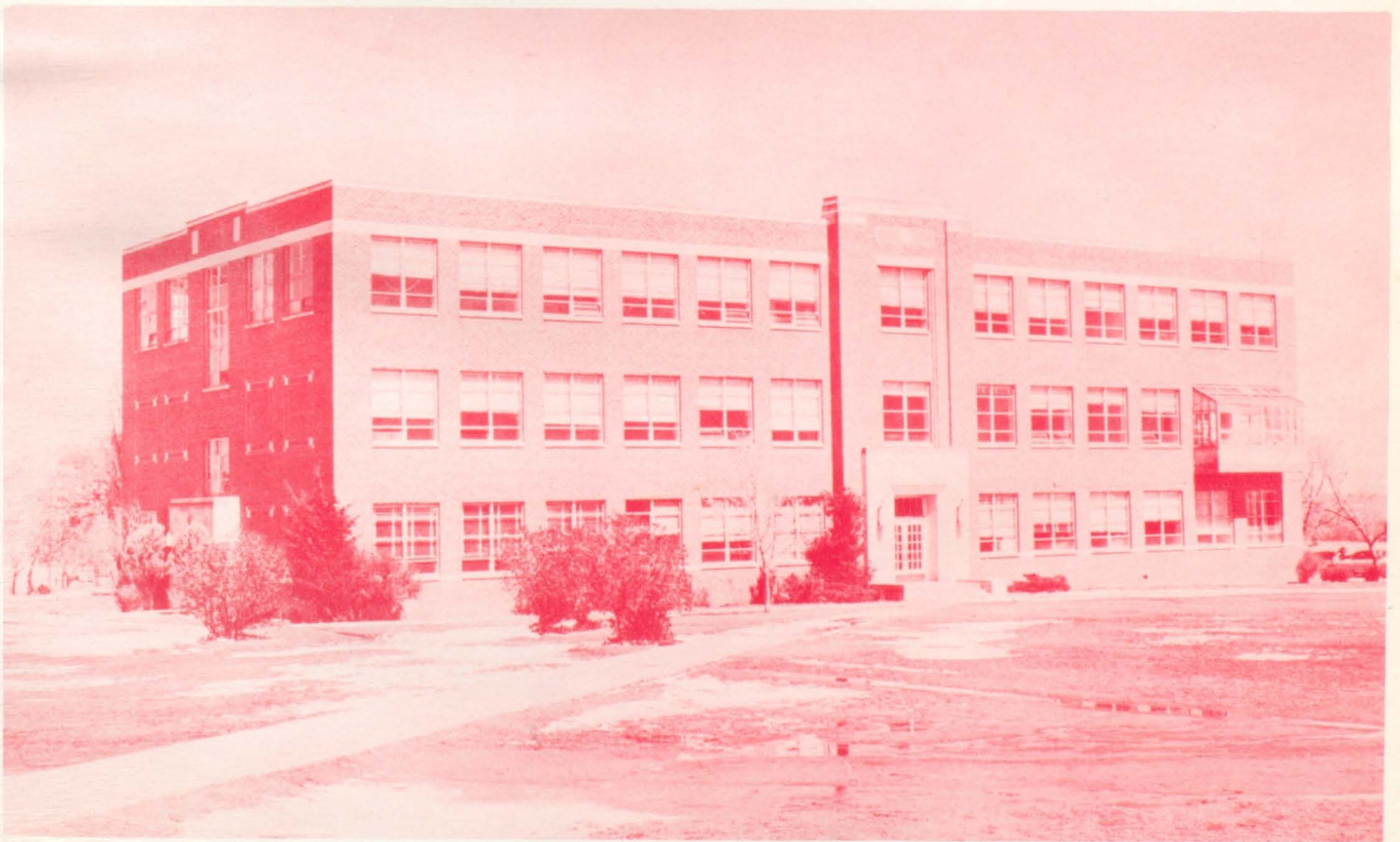


ADMINISTRATION BUILDING

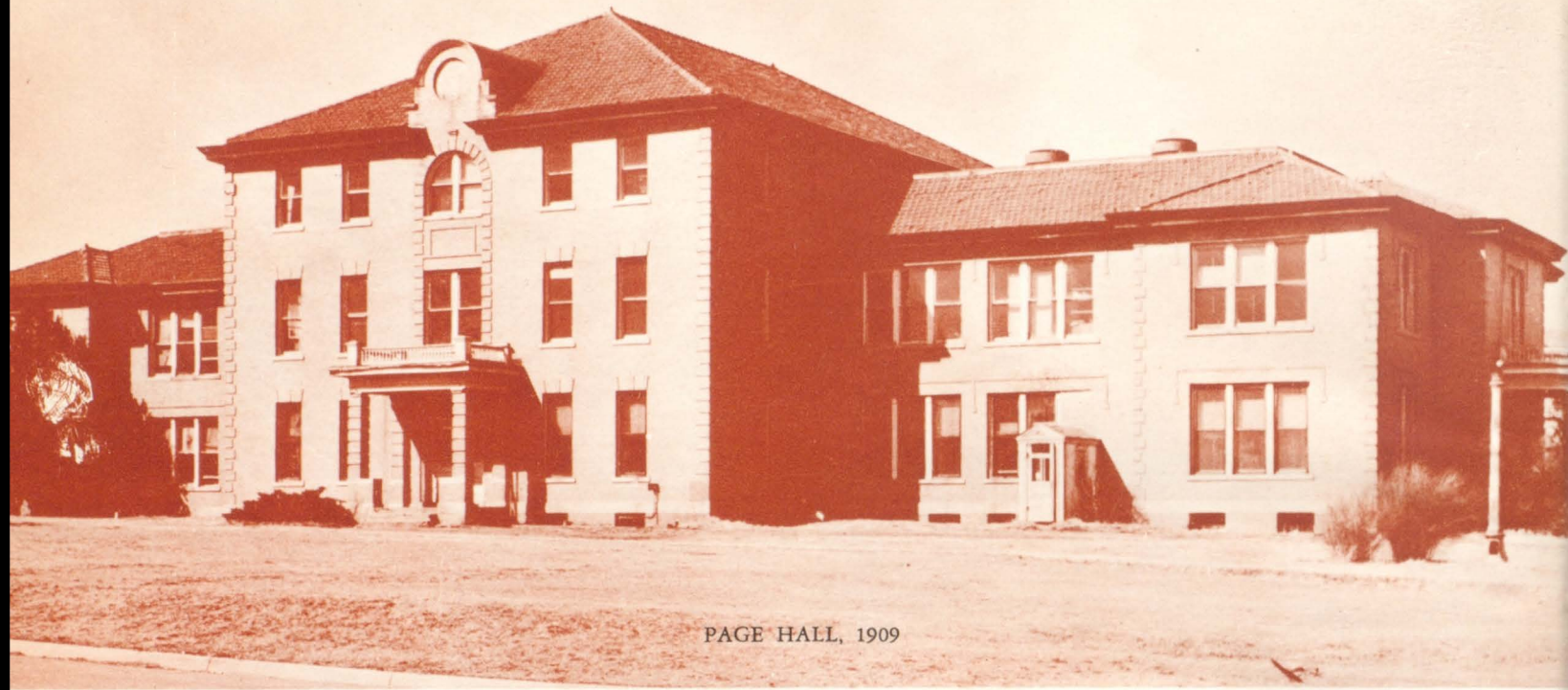
Division of Agriculture
Division of Arts and Sciences

Division of Education
Division of Home Economics

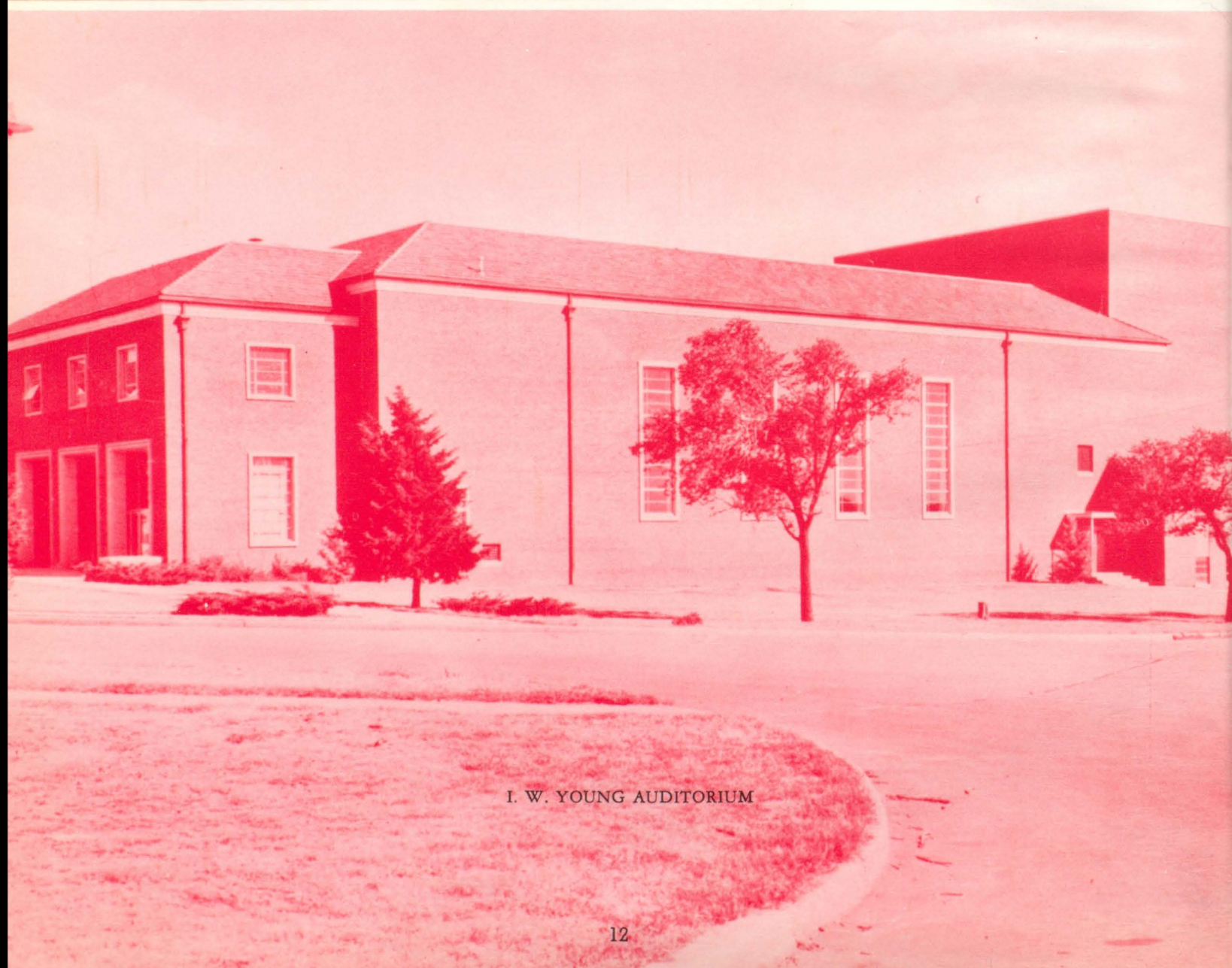
Division of Mechanic Arts



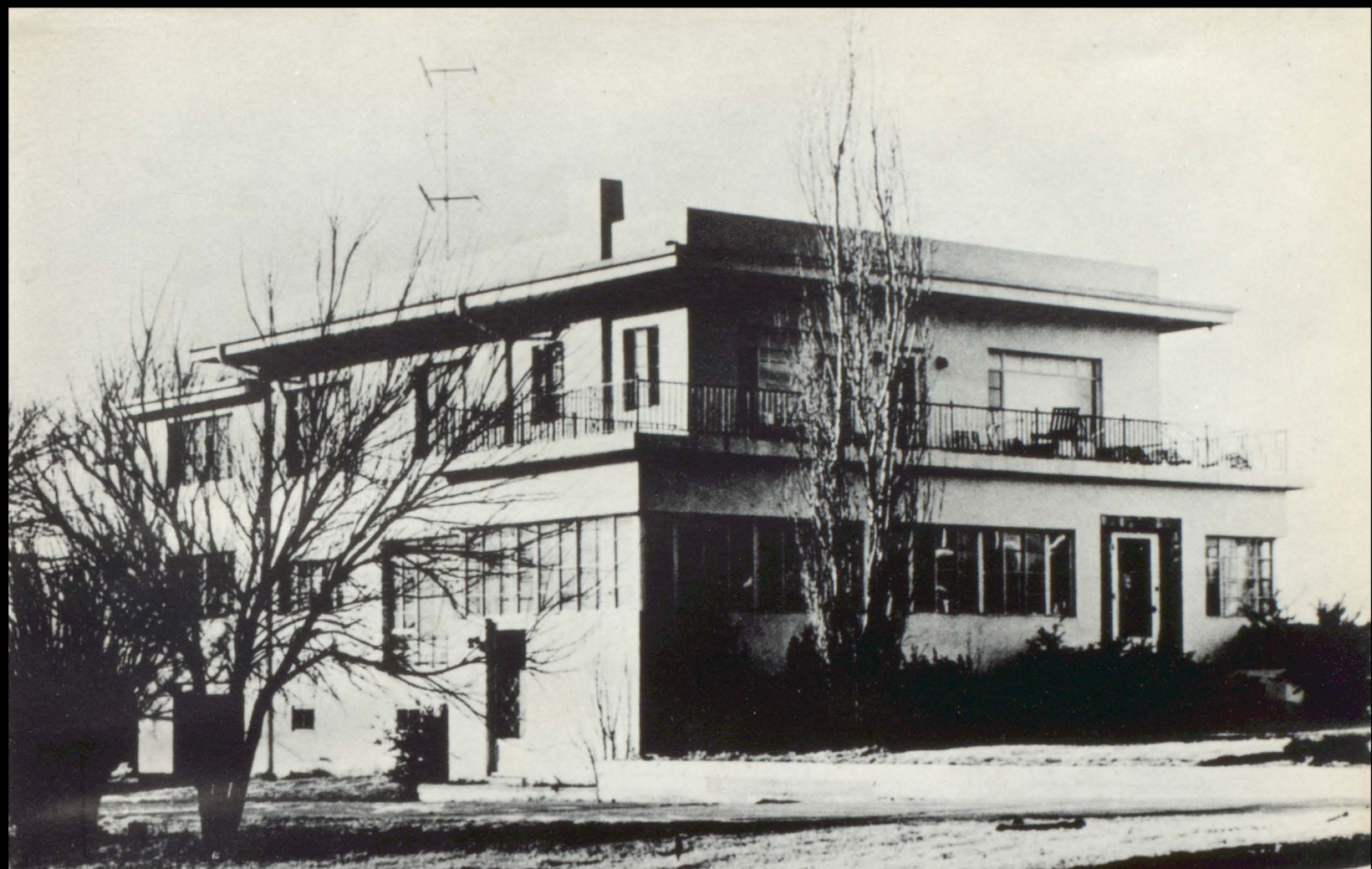
SCIENCE AND AGRICULTURE BUILDING



PAGE HALL, 1909



I. W. YOUNG AUDITORIUM

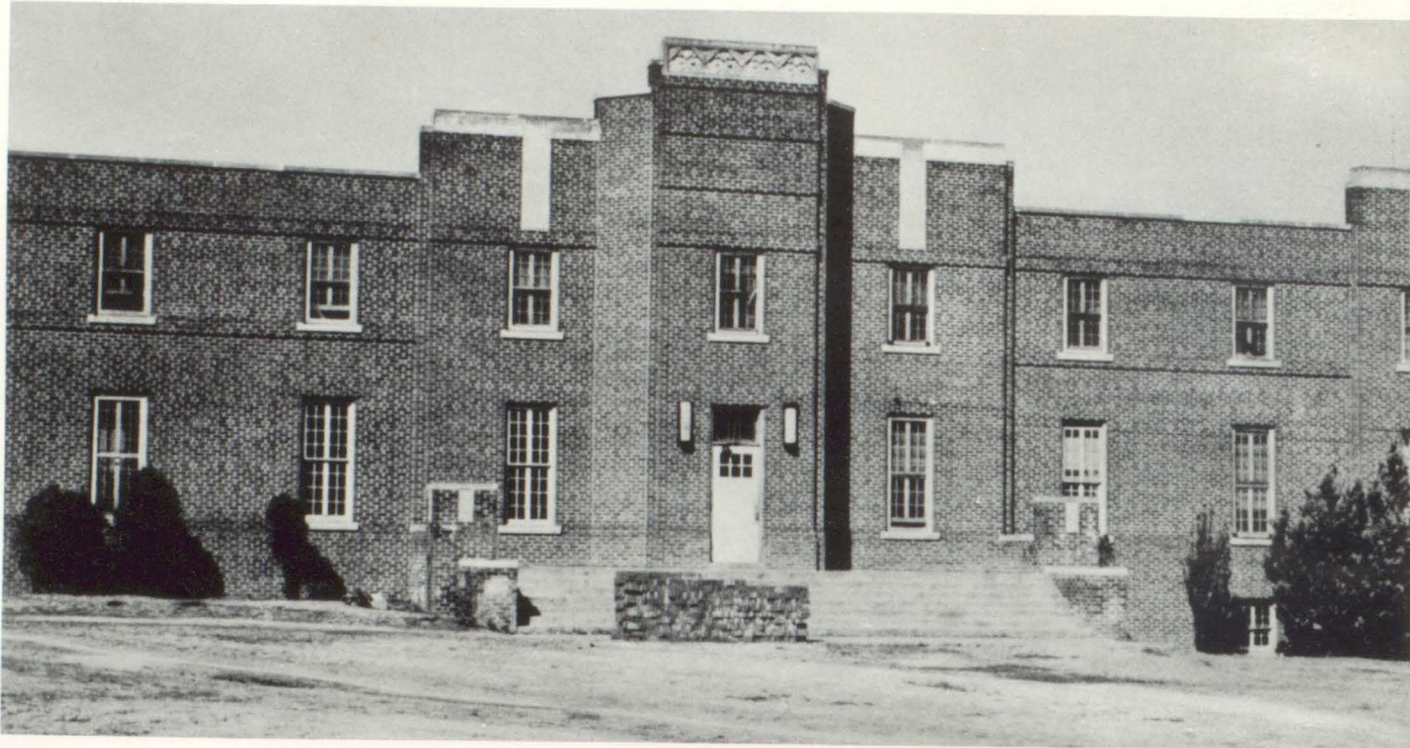


HOME OF THE PRESIDENT OF LANGSTON UNIVERSITY



Our beloved "First Lady"—
Mrs. Dorothy P. Harrison
Past National Grand President
Delta Sigma Theta Sorority

A RESIDENCE FOR MEN



A RESIDENCE FOR WOMEN



ARVELENE SUTTON



FRANCES REED

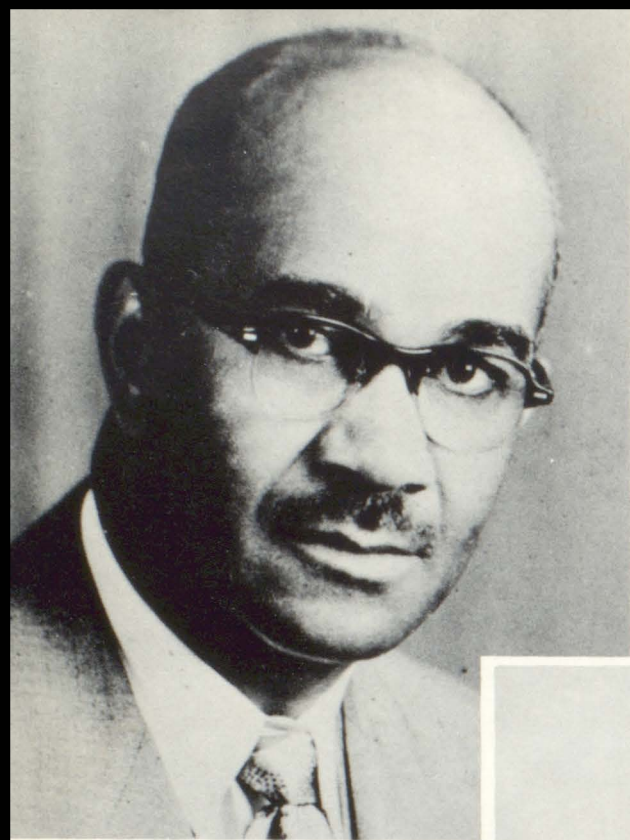


WILLIE BAKER



RAYMOND McKINNEY

RUFUS BLACK



LEORY G. MOORE
Dean of Instruction and Director,
Division of Arts and Sciences
Director of the Summer School

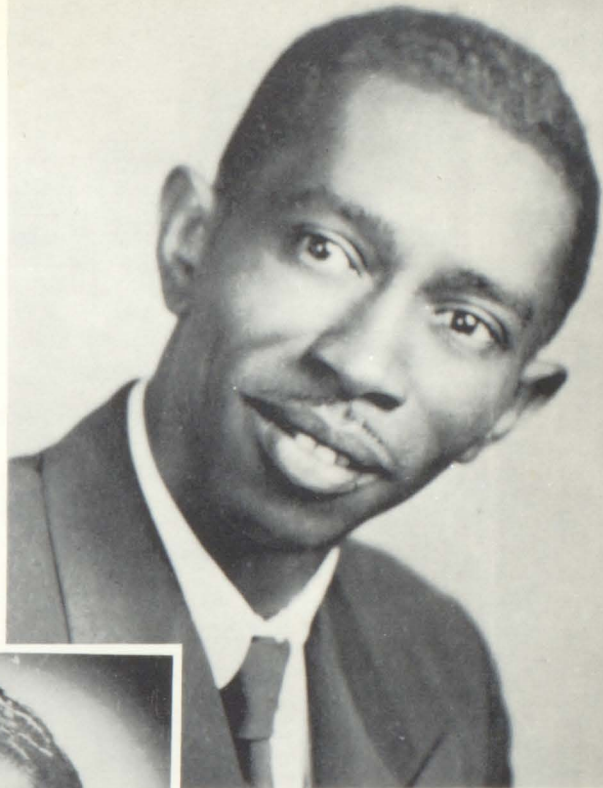


C. DEWEY BATCHLOR
Registrar



INMAN A. BREAUX
Vice-President and
Dean of Administration

HUEY J. BATTLE
Ph.D.
Director
Division of Agriculture



ARTHUR C. SHROPSHIRE
Ph.D.
Director
Division of Education



E. A. MILLER
M. S., Professor and Director
Division of Mechanic Arts



SADIE G. WASHINGTON
M.A.
Director, Division of Home Economics

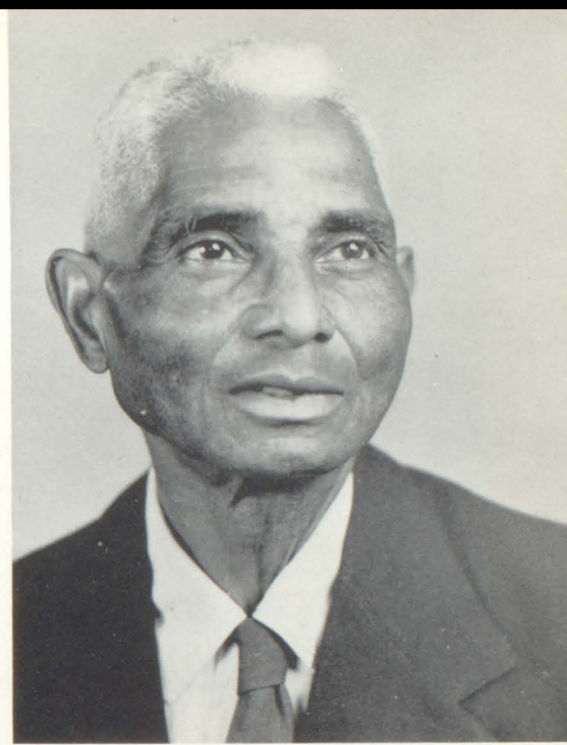


ELMYRA R. DAVIS
M.S.
Librarian



MARJORIE L. PIERCE
M. S.
Dean of Women

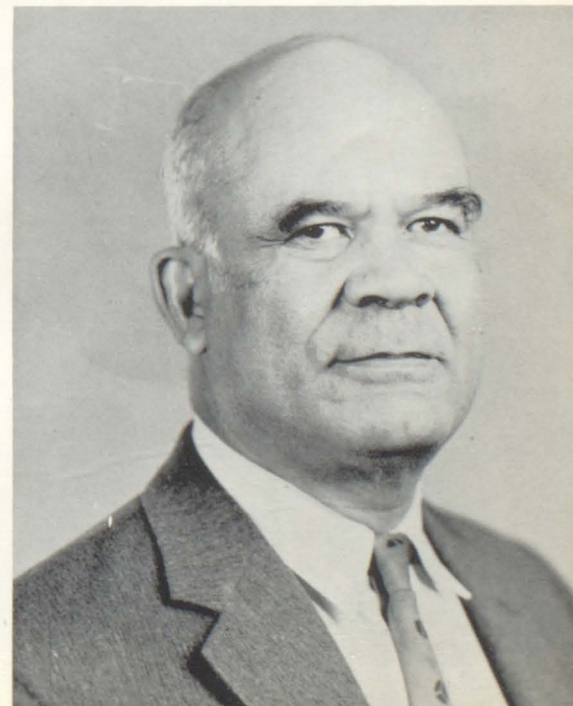
EUGENE J. BROWN
A.B., Head, Department
of Art



MIZURA C. ALLEN
M.A., C. P. A., Head
Department of B.A. and B.E.



G. H. HENDRICKS
M. S., Head, Department of Mathematics





THELMA ARTERBERY
M.S., Instructor,
Cosmetology

CAROLYN A. BANNER
M.S., Instructor,
Education

JIMMIE BATTLE
M.S., Instructor,
Education

THELMA BROWN
M.S., Assistant
Professor, Education



HENRY R. COLBERT
Instructor of
Brickmasonry

JOHN W. COLEMAN
Ph.D., Director of
Religious Activities and
Instructor, Social Science



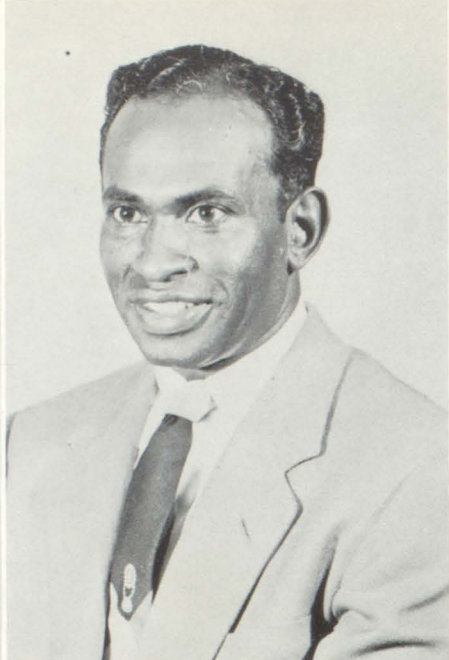
LENOULIAH GANDY
M.S., Associate Professor
of Home Economics and
Itinerant Teacher Trainer



GOMEZ, C. HAMILTON
M.S., Assistant Professor,
Biology



NELLIE B. DILLON
M.E., Assistant Professor
and Supervisor, Trades
and Industrial Education



BERNARD CROWELL
B.S., Instructor of Physical
Education

T. M. CRISP
Associate Professor History

DORIS DUCKWORTH
B.S., Instructor of Physical
Education

ADA LOIS S. FISHER
L.L.D., Director of Public Relations
and Instructor, Social Science



A. C. HEBERT
B.S., Assistant Professor

JULIUS H. HUGHES
M.S., Professor, Education
(On Leave)

RAYMOND C. JOHNSON
M.S., Instructor, Mechanic Arts

EDDIE JORDAN
M.A., Instructor, Art Department



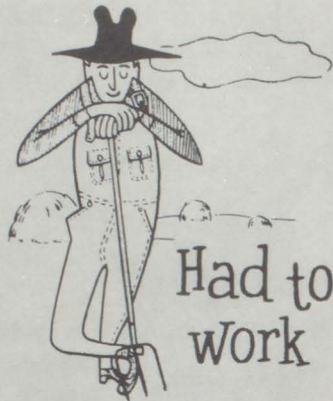
D. C. JONES
M.S.
Associate Professor
Agriculture

MOXYE W. KING
M.S., Instructor, English
(On Leave)

THERESIA B. MOORE
M.S., Instructor of Education

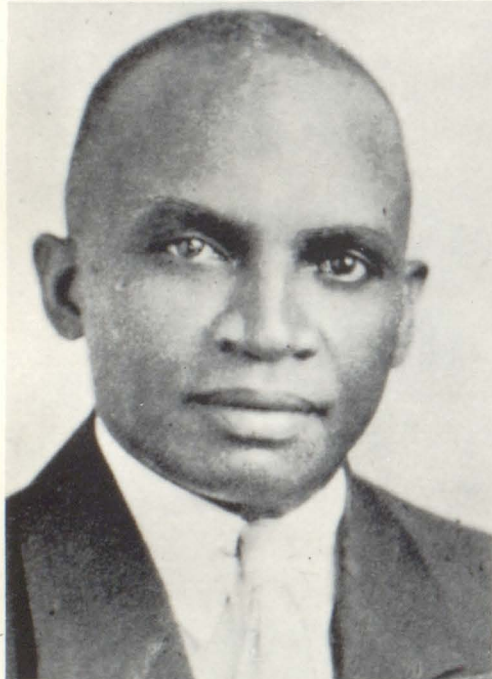
ALMEDA C. PARKER
M.S., Instructor, Business Education





LILLIE S. SEWARD
B.S., Instructor of Mathematics

W. E. SIMS
B.A., Assistant Professor of Music



W. E. SIMMS
M.S.
Assistant Professor
Agriculture

LOUISE C. STEPHENS
D.E.D., Associate Professor
of Education



AMELIA R. TAYLOR
M.M.E., Instructor, Music

ALBERT M. THOMPSON
M.S., Instructor of Mechanic Arts

MELVIN B. TOLSON
A.M., Professor of Creative
Literature and Director,
Dust Bowl Theater

JIMMIE WHITE
M.S.
Instructor
Agriculture



CLARENCE CLARK
B.S., Claim Clerk

JOHN W. GAFFNEY
B.S., Comptroller



CARL JONES
B.S., Accountant

ELOISE HEMPHILL
B.S., Cashier, Finance Office





ALINE JOHNSON
B.S., Secretary to President
G. L. Harrison

BERNICE THOMPSON
B.A., Secretary, Administrative Dean



EDITH MALOY
B.S., Secretary, Agriculture

MAEDEAN WYATT
B.S., Statistical Clerk,
Office of the Registrar

RACHEL ANN MAST
B.S., Assistant Librarian

ELLA PARKER
B.S., Assistant Librarian



MARIAN PATMON
B.S., Catalog Librarian

MARJORIE TAYLOR
B.S., Assistant



T. J. ANDERSON
Ph.D., Head of the Department of
Music

CHESTER W. HARRELL
M.A., Instructor in the Biology
Department



K. C. MILLER
Ph.D., Head of the Department of
Modern Languages

JAMES A. SIMPSON
B.S., Instructor of Chemistry



S. C. THOMPSON
M.D., University Physician and
Health Director

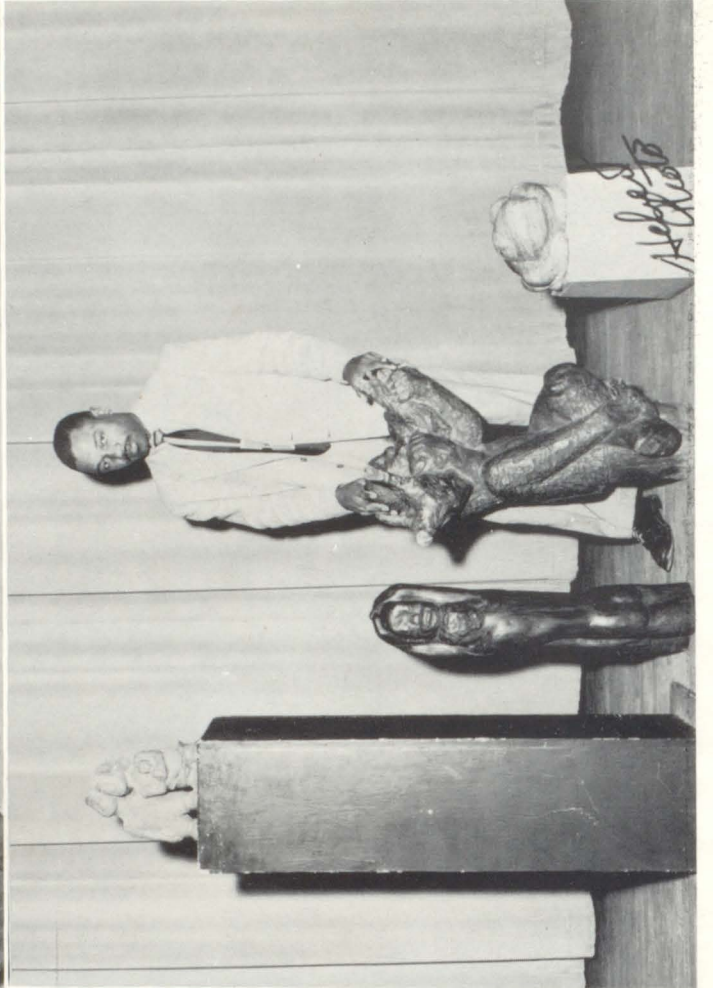
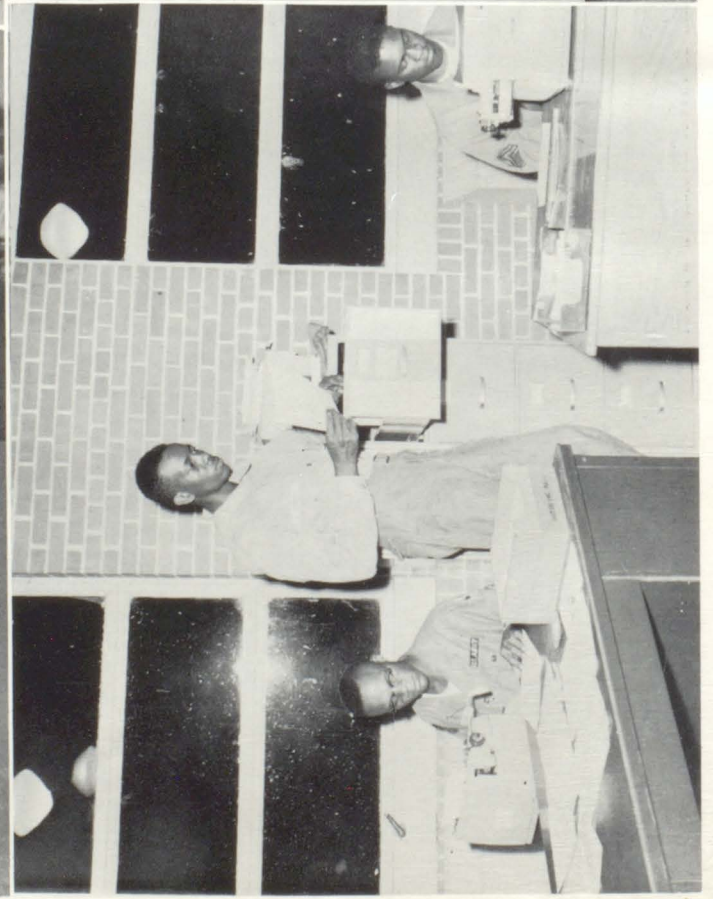
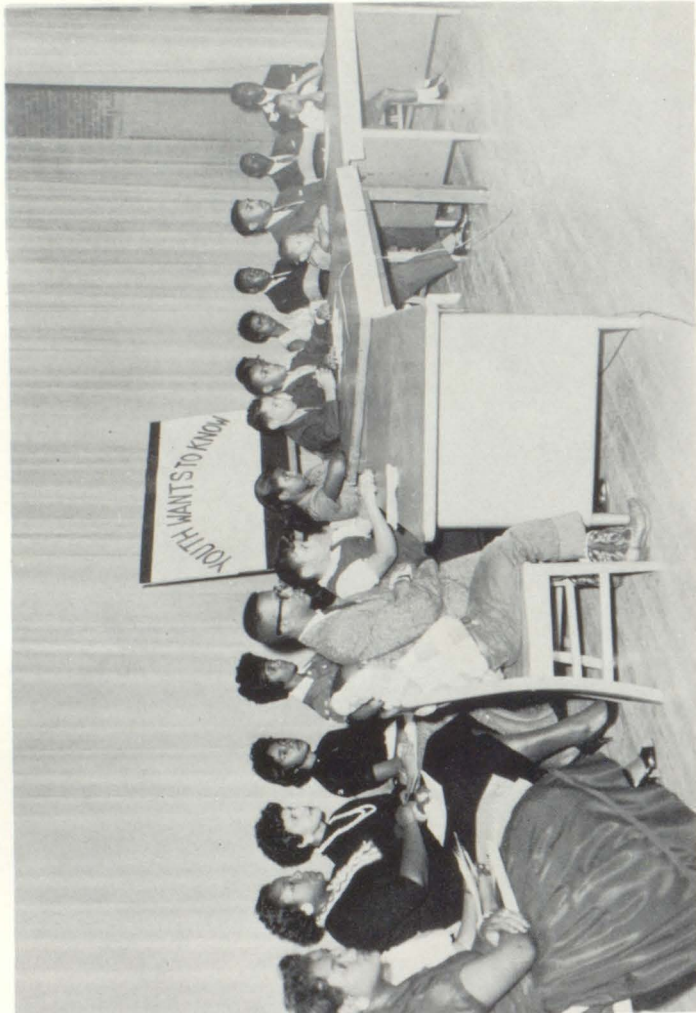
ROSA L. JENKINS
B.S., Dormitory Director



RUTH BLAKE
Dormitory Director

ERNESTYNE A. WILLIAMS
Supervisor of Dining Hall

CAMPUS ACTIVITIES



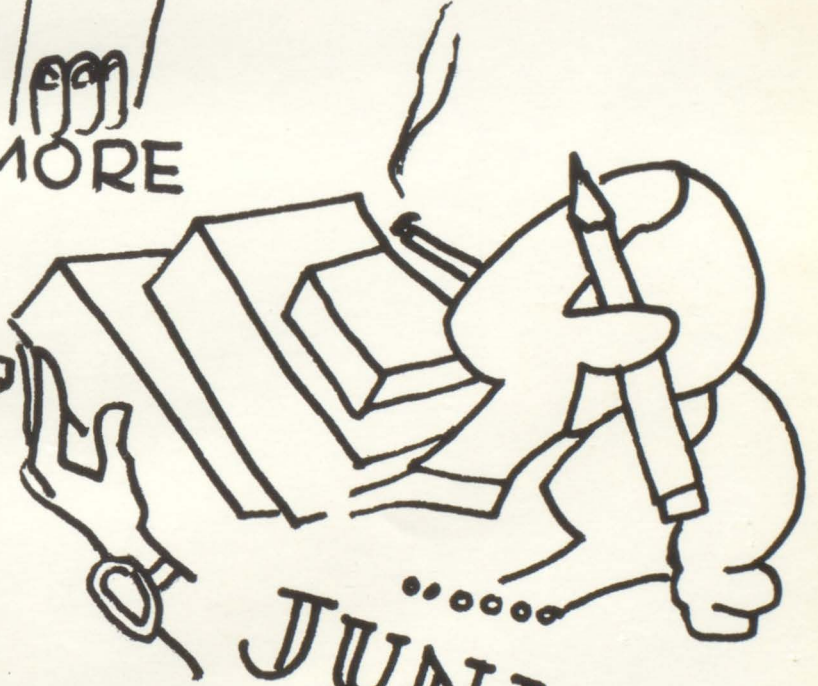
Classes



Freshman



SOPHOMORE



JUNIOR

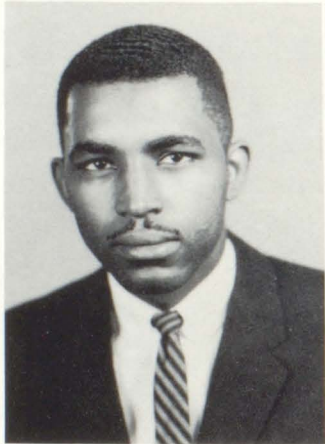


Senior

Senior Class Officers



Perry, Earl Jennings
President
Springs, Alexander
Vice President



Dillard, G. Henry
Treasurer
Tilford, Geraldine
Assistant Secretary

Hairrington, R. Bernard
Parliamentarian
Hopkins, Odie Mae
Secretary



Washington, Harold G.
Student Council Representative
Parker, Almeda C.
Sponsor

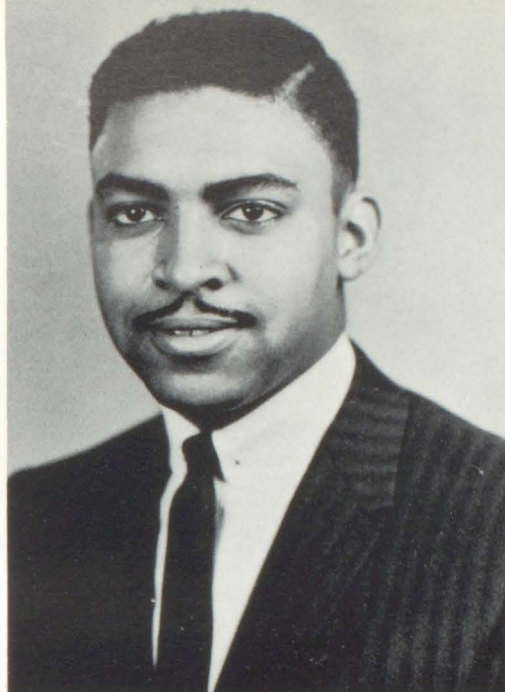


ABRAM, JAMES B.

Ardmore, Oklahoma
Biology
Alpha Kappa Mu
Student Council
Kappa Delta Pi
Gazette Staff, Annual Staff
Kappa Alpha Psi Fraternity

ADAIR, CLARENCE D.

Elk City, Oklahoma
Mathematic
Kappa Alpha Psi Fraternity
Dust Bowl Player
S.C.A.
Men Dormitory Council



ALDRIDGE, MARY FRANCES

Paris, Texas
Elem. Education
Usher Board, N.S.E.A.

ALDRIDGE, WILLIAM

Paris, Texas
Biology
Kappa Alpha Psi Fraternity
Usher Board



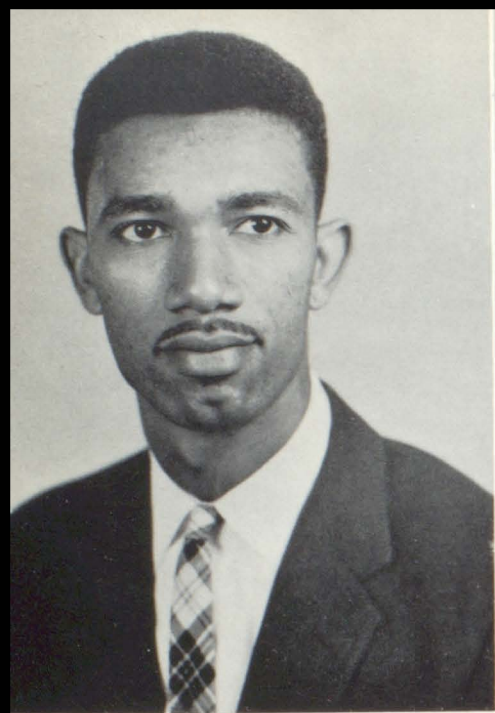
ALEXANDER, FLOYD

Nowata, Oklahoma
Biology
Letterman's Club
Kappa Alpha Psi Fraternity

ASFAW, TEODROS

Addis Abeba Ethiopio
Agriculture
YMCA, International Student
Union
Agricultural Club
Ethiopian Student
Union in U.S.A.





ATKINSON, MORRIS J.

Langston, Oklahoma
Sociology
Phi Beta Sigma Fraternity
A Cappella Choir
Social Science Club



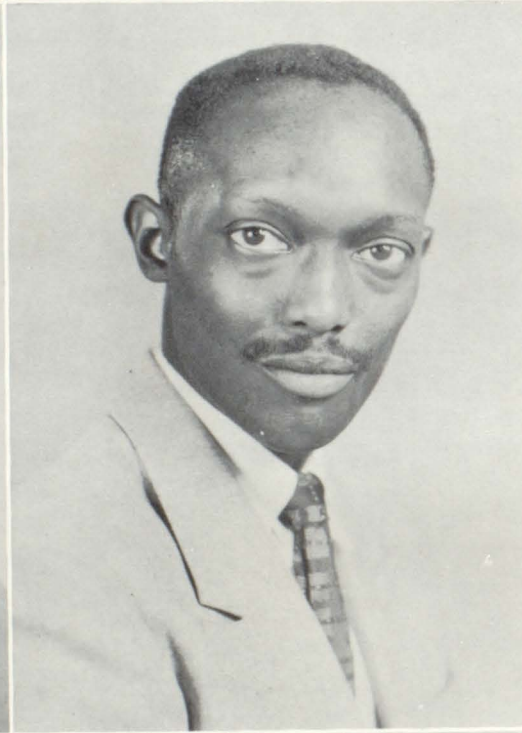
BALLARD, NORMA RUTH

Tulsa, Oklahoma
Business Administration
Gazette Staff
FBLA
Annual Staff



BOWLER, EUNETA J.

Boley, Oklahoma
Business Education
FBLA
Gazette Staff
Annual Staff



BRACKEEN, THOMAS A.

Muskogee, Oklahoma
Agriculture
S.C.A.
Aggie Club



COLBERT, GLADYS

Tulsa, Oklahoma
Business Adm.
Pyramid Club
F.B.L.A.
Gazette Staff
Accounting Lab. Assistant



COMBS, OPAL

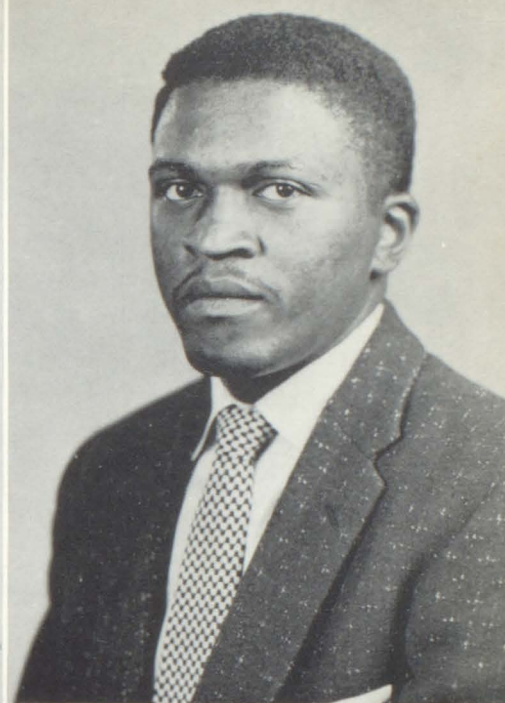
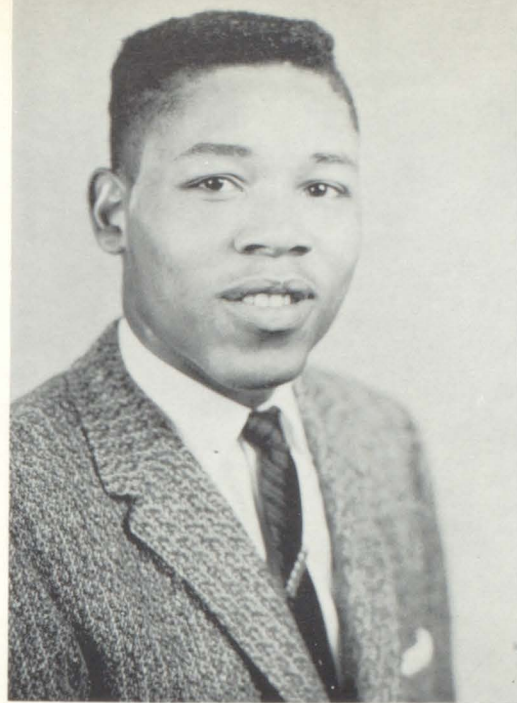
Clearview, Oklahoma
Bus. Adm.
AKA Sorority, F.B.L.A.
Who's Who
Alpha Kappa Mu
Annual Staff

CRENSHAW, CALVIN

Slick, Oklahoma
Technical Agriculture
Aggie Club
Letterman's Club

DANSBY, WALTER

Mounds, Oklahoma
Agriculture
Kappa Delta Pi
Aggie Club
Who's Who's
Omega Psi Phi Fraternity

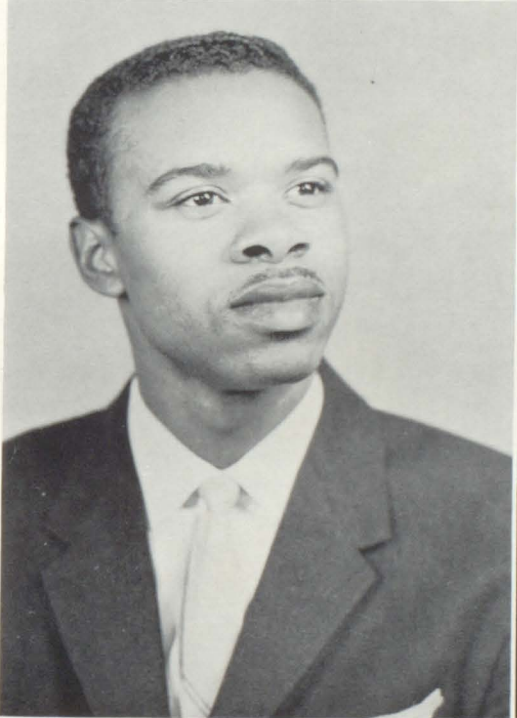


DECKARD, GEORGE

Oklahoma City, Oklahoma
Biology
Alpha Phi Alpha Fraternity
Gazette Staff

DILLARD, GEORGE HENRY

Lawton, Oklahoma
Sociology
Social Science Club
A Cappella Choir
S.C.A. Usher Board
Sphinx Club



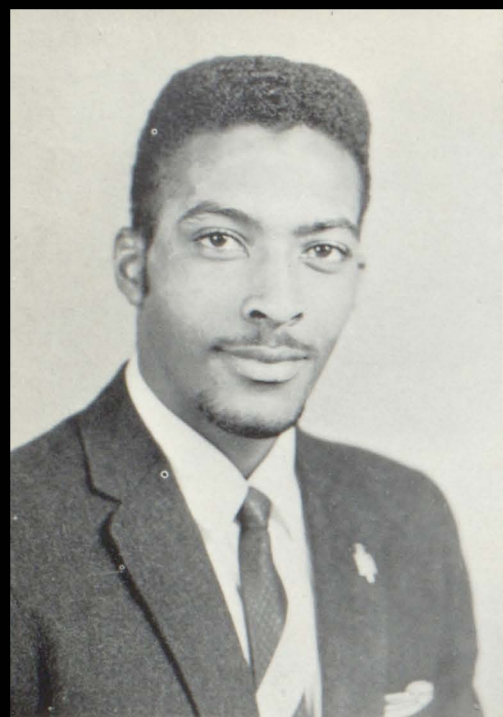
FISHER, FLOYD

Boswell, Oklahoma
Technical Agriculture
Aggie Club
Omega Psi Phi Fraternity

HAGLER, HERBERT JR.

Lawton, Oklahoma
Music Education
N.S.E.A. — M.E.N.C.
Lampados Club
A Cappella Choir





HARRINGTON, RAYFORD
BERNARD

Muskogee, Oklahoma
Technical Agriculture
Aggie Club, S.C.A.
Alpha Kappa Mu Honor
Society
Dairy Club



HALL, PHOEBE

Muskogee, Oklahoma
Mathematics
Zeta Phi Beta Sorority



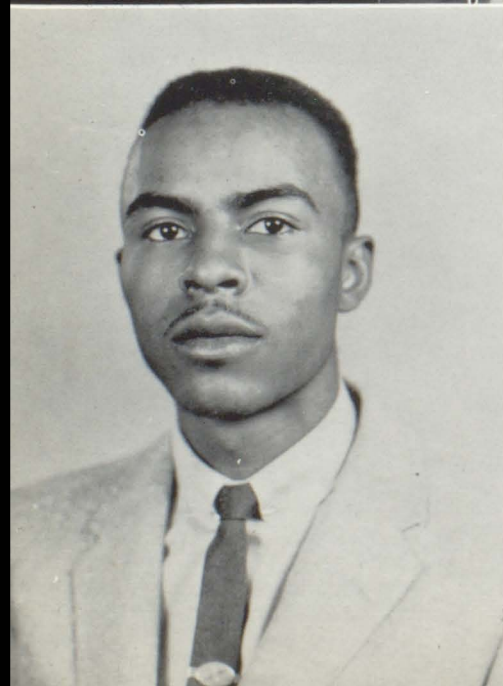
HARMON, NORMA JEAN

Oklahoma City, Oklahoma
Business Education
Kappa Delta Phi Honor
Society
Alpha Kappa Alpha Sorority
Gazette Staff
F.B.L.A.



HAYNES, JEAN ESTHER

Langston, Oklahoma
Business Education
Philorati Social Club
F.B.L.A.



HILLMON, JOE W.

Frederick, Oklahoma
Music
University Band



HOLLAWAY, MABLE MARIE

Boley, Oklahoma
Business Education
Alpha Kappa Alpha Sorority
F.B.L.A.
Pan-Hellenic Council

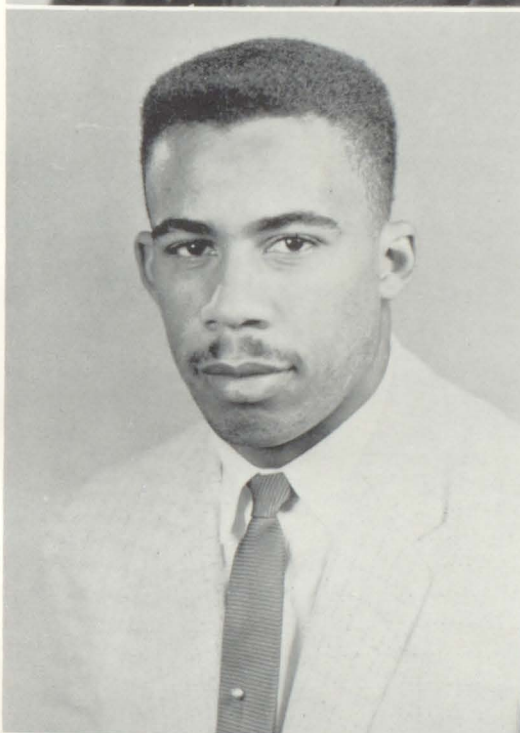
HOPKINS, ANDREW JACOB

Sapulpa, Oklahoma
Physical Education
Usher Board
Baseball Team
S.C.A.



HOPKINS, ODIE MAE

Oklahoma City, Oklahoma
Business Education
Alpha Kappa Alpha Sorority
Junior Counselor
Gazette Staff

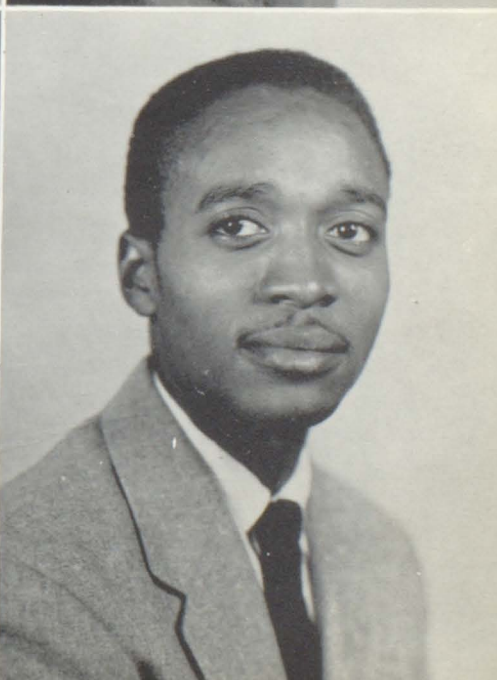


HOPSON, LEO

Tulsa, Oklahoma
Elem. Ed.
Scroller Club — N.S.E.A.
S.C.A., Usher Board
Letterman's Club

JACKSON, DORISCELLA

Tulsa, Oklahoma
Music Education
Philorati Club, M.E.N.C.
F.T.A., A Cappella Choir



JACKSON, LAVERIA

Sand Springs, Oklahoma
Business Education
F.B.L.A.
Zeta Phi Beta Sorority

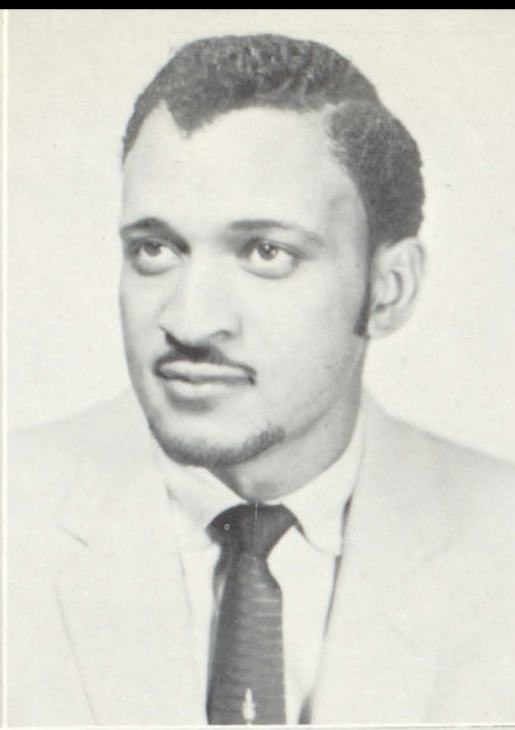
JACKSON, MAURICE E.

Boley, Oklahoma
Music
Sphinx Club



JEFFERSON, THELMA

Tulsa, Oklahoma
Bus. Ed.
F.B.L.A.



JIMMERSON, ROY

Checotah, Oklahoma
Biology



JOHNSON, AUDREA MEDICI

Ardmore, Oklahoma
Biology
Who's Who
Kappa Delta Pi Honor Society
Alpha Kappa Alpha Sorority
S.C.A.
Pan-Hellenic Council
N.S.E.A.



KENNEDY, WADSWORTH

Waukomis, Oklahoma
Biology



LAWSON, CASSELL AVON

Little Rock, Arkansas
Social Science, N.S.E.A.
Letterman's Club
Social Science Club
Usher Board
Basketball Team, Annual Staff
Gazette Staff
Kappa Alpha Psi Fraternity



LEE, ELROY

Pampano Beach, Florida
Biology, Football
Alpha Phi Alpha Fraternity

LONG, VERLIN

Ada, Oklahoma
Business Administration
F.B.L.A.
Alpha Phi Alpha Fraternity



McKINNEY, HERMAN

Chickasha, Oklahoma
Business Administration
F.B.L.A.
Omega Psi Phi Fraternity
Alpha Kappa Mu, Who's Who
Annual Staff, Gazette Staff
Univ. Band, Pan-Hellenic
Council

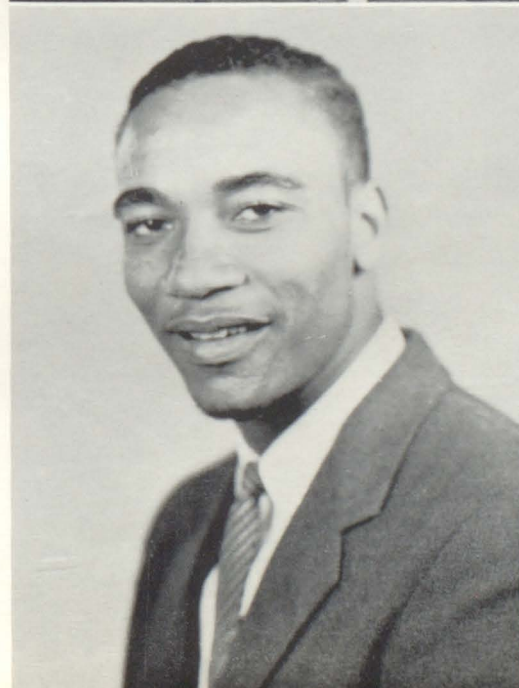


McKINNEY, LAYFAYETTE

Chickasha, Oklahoma
Business Administration
Omega Psi Phi Fraternity
University Band
Alpha Kappa Mu
Who's Who, F.B.L.A., S.C.A.
R.O.T.C.
Annual Staff, Gazette Staff
Student Council

MACK, JOSEPH

Guthrie, Oklahoma
Elementary Education
N.S.E.A.

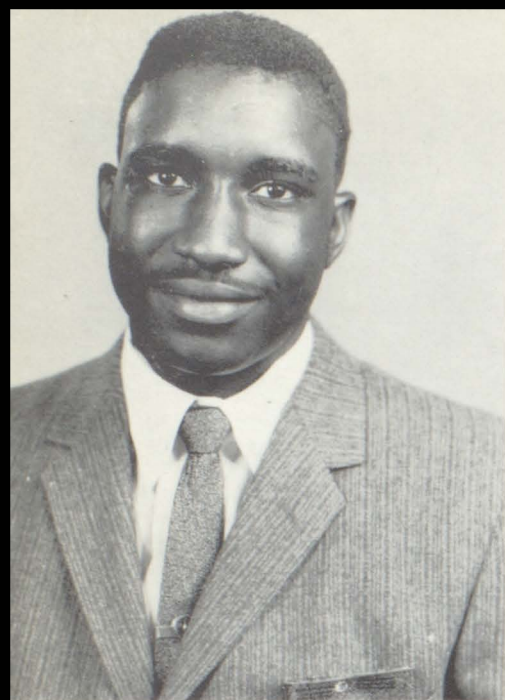


McCRAY, OTIS

Tulsa, Oklahoma
Sociology
Kappa Alpha Psi Fraternity
Social Science Club
Letterman's Club
Football
Basketball

McMULLEN, CARL

Okmulgee, Oklahoma
Biology

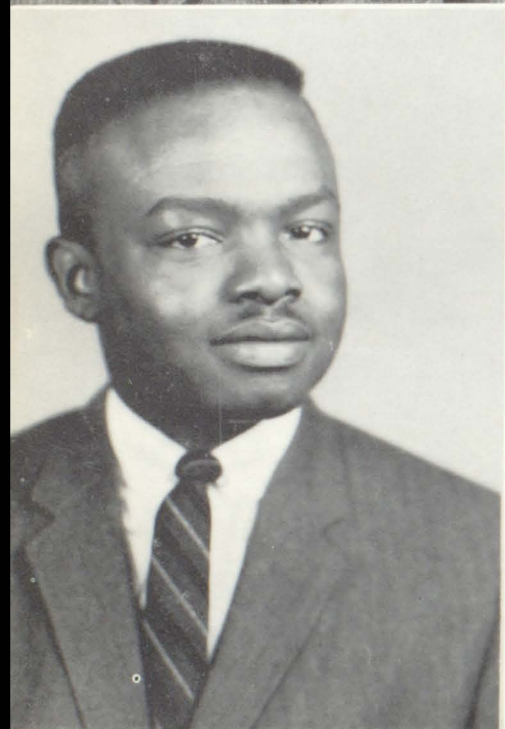


MILES, WELDON

Boswell, Oklahoma
Agriculture
Aggie Club
S.C.A.
Sunday School
Phi Beta Sigma Fraternity
Annual Staff

MOSLEY, JAMES

Ponca City, Oklahoma
Mathematics
Basketball
Letterman's Club
Kappa Alpha Psi Fraternity
Mathematics Club



NEALY, RICHARD

Oklahoma City, Oklahoma
Mathematics
University Band
Phi Beta Sigma Fraternity
N.S.E.A.

OWENS, SHIRLEY McBEE

Tulsa, Oklahoma
Music Education
Delta Sigma Theta Sorority
Philorati Club
L.U. Marching Concert Band
M.E.N.C., Kappa Delta Pi
Alpha Kappa Mu, N.S.E.A.
Who's Who



OWENS, WALLACE

Muskogee, Oklahoma
Art
Alpha Rho Tau

PERRY, EARL

Oklahoma City, Oklahoma
Mathematics
Student Council
Mens Dormitory Council
A Cappella Choir
Omega Psi Phi Fraternity
R.O.T.C.

PETIT, MARGARET JO

Preston, Oklahoma
Business Education
F.B.L.A., Gazette Staff
N.S.E.A.



PRICE, MATTIE LOU

Eufaula, Oklahoma
Business Education
Philorati Club
F.B.L.A.
Annual Staff



RICHARDSON, SHIRLEY

Oklahoma City, Oklahoma
English
Ivy Leaf Club
Band
Philorati Club

RICHARDSON, WILLIAM R.

Oklahoma City, Oklahoma
Business Administration

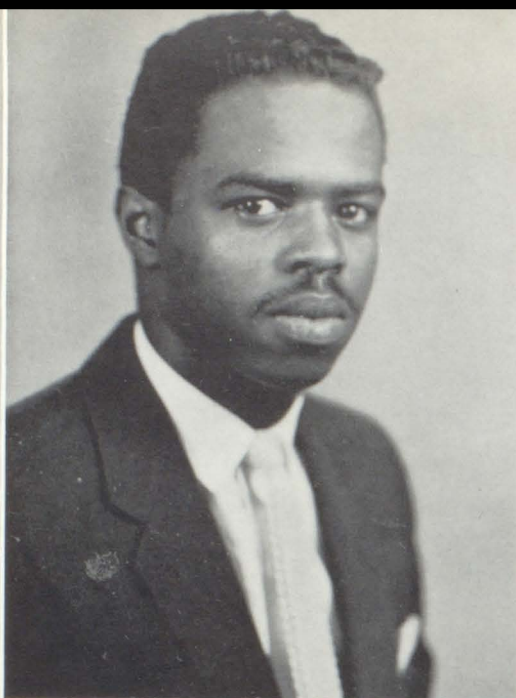
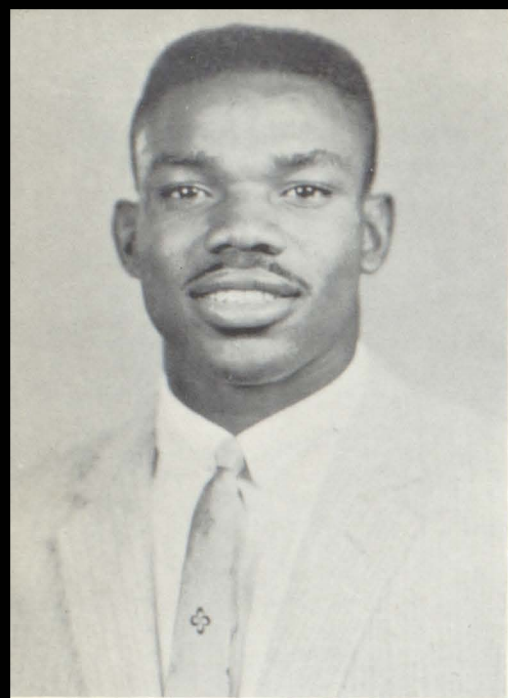


ROSS, ALFRED

Okmulgee, Oklahoma
Agriculture

SEWARD, JULIA

Oklahoma City, Oklahoma
Social Studies
Pyramid Club
N.S.E.A., S.C.A.
Philorati Club
Social Science Club
A Cappella Choir

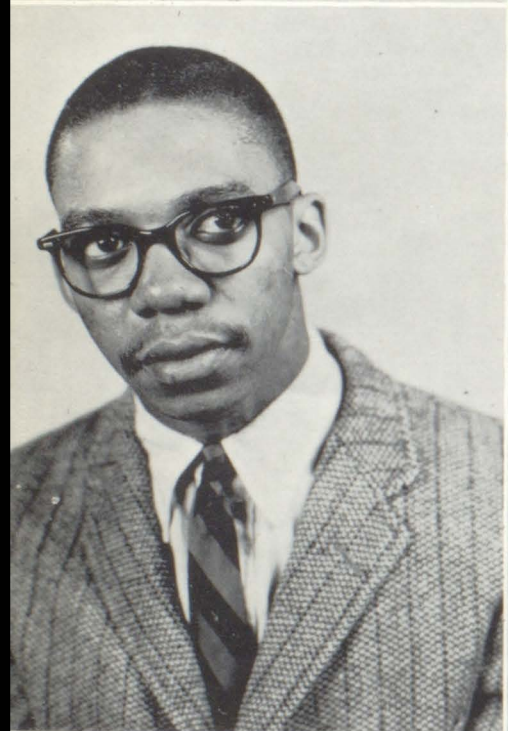


SMITH, CHARLES

Oklahoma City, Oklahoma
Physical Education
Football
Letterman's Club, Tumbling
Team, Pan-Hellenic Council
Kappa Alpha Psi Fraternity

SNEED, ODNEY

Oklahoma City, Oklahoma
Biology
Chemistry Club
S.C.A., Alpha Phi Alpha
Fraternity



SPEARS, MAURICE

Oklahoma City, Oklahoma
Music Education
University Band
Dance Orchestra, M.E.N.C.
Kappa Alpha Psi Fraternity
Pan-Hellenic Council

STEVENSON, WINONA

Ardmore, Oklahoma
Business Education
Delta Sigma Theta Sorority
N.S.E.A., Pan-Hellenic Council
Usher Board, F.B.L.A., S.C.A.
Annual Staff



SPRINGS, ALEXANDER

Tulsa, Oklahoma
History
Social Science Club
Letterman's Club, Kappa Alpha
Psi, Basketball Team

STOKES, URETTA

Tulsa, Oklahoma
Business Education
F.B.L.A.

TERRY, INEZ

Spencer, Oklahoma
Sociology
S.C.A., Social Science Club

TILFORD, GERALD

McAlester, Oklahoma
Music Education
Band, Kappa Kappa Psi
Alpha Kappa Mu
Kappa Delta Pi
Who's Who

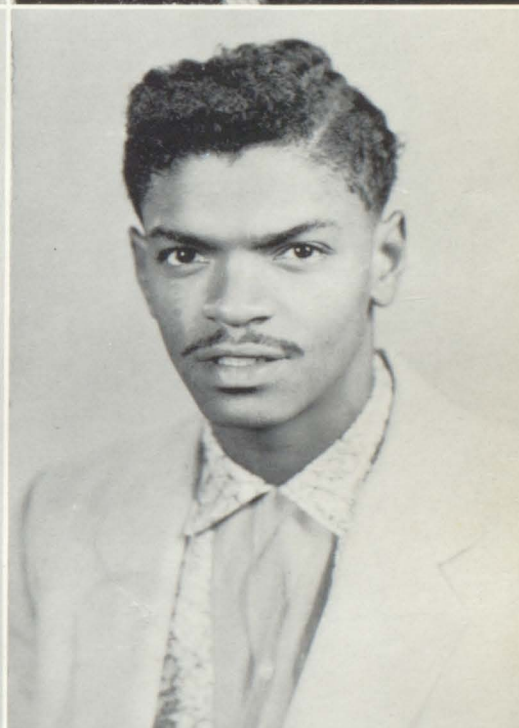


TILFORD, GERALDINE

McAlester, Oklahoma
Social Science
N.S.E.A., S.C.A.
Social Science Club

TOLIVER, HAROLD

Checotah, Oklahoma
Biology
Alpha Phi Alpha Fraternity
Kappa Delta Pi

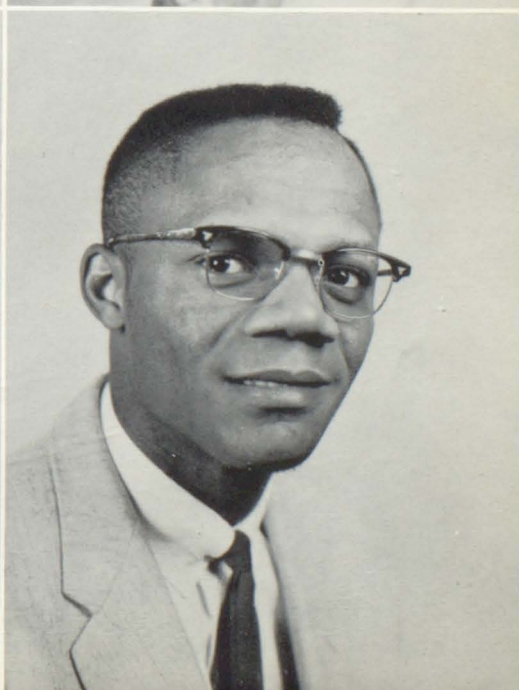


TOMLIN, RUDOLPH

Boley, Oklahoma
Agriculture
Lampados Club
Aggie Club

TOWNSELL, LEO

Red Bird, Oklahoma
Industrial Arts
Phi Beta Sigma
Pan-Hellenic Council





TROUTT, BERTHA

Langston, Oklahoma
Elementary Education
Zeta Phi Beta Sorority
N.S.E.A.



TRYON, IRMA

Boley, Oklahoma
Business Education
Philorati Club
Gazette Staff, F.B.L.A.



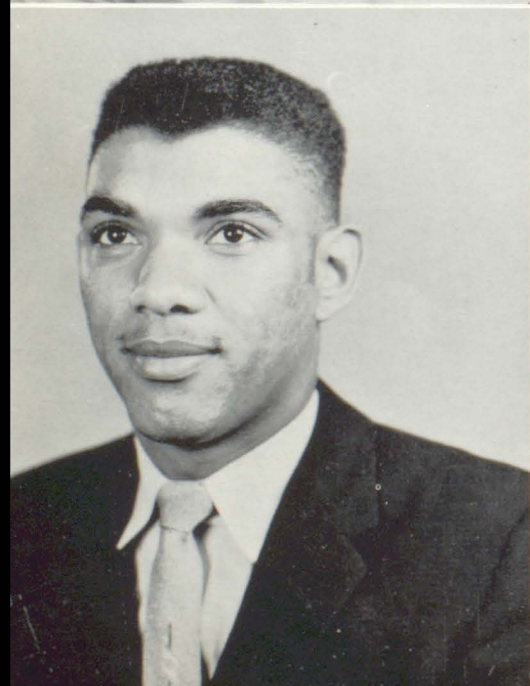
VARNER, ROSE

Tatums, Oklahoma
Business Education
Delta Sigma Theta Sorority
N.S.E.A., F.B.L.A., S.C.A.
Pan-Hellenic Council
Usher Board, Annual Staff



WALKER, TOMYCINE

Oklahoma City, Oklahoma
Business Education
Business Club, Gazette Staff
N.S.E.A.



WALLACE, CLIFFORD DAVID

Okmulgee, Oklahoma
Biology
Alpha Phi Alpha Fraternity
Kappa Kappa Psi, Band
S.C.A., R.O.T.C., Sunday
School



WARE, VENORA

Meridian, Oklahoma
English
Kappa Delta Pi
Alpha Kappa Mu, S.C.A.
Gazette Staff
Delta Sigma Theta Sorority
Junior Counselor

THOMPSON, VERSADELL

Oklahoma City, Oklahoma
F.B.L.A., Gazette Staff
Delta Sigma Theta Sorority
Business Education
Annual Staff



COTTON, JUANITA IRABELL

Langston, Oklahoma
Art
S.C.A., Delta Sigma Theta
Sorority, Alpha Rho Tau Art
Club

PIERSON, JUANITA L.

Tulsa, Oklahoma
Music Education
Delta Sigma Theta Sorority
M.E.N.C.
A Cappella Choir

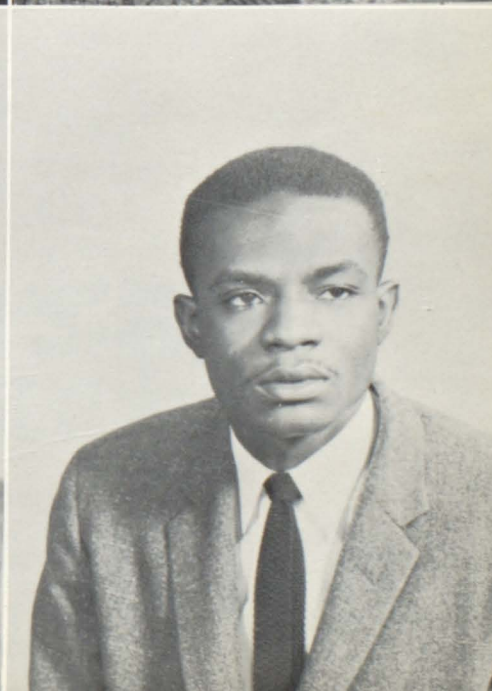


WASHINGTON, HAROLD G.

Wichita Falls, Texas
Kappa Alpha Psi Fraternity
Social Science
Alpha Kappa Mu
Social Science Club
Annual Staff
Class Representative
Kappa Delta Pi

WILEY, BILLY EARL

Tulsa, Oklahoma
Music
Band, R.O.T.C.
Alpha Phi Alpha Fraternity
A Cappella Choir



JACKSON, EMMETT JR.

Oklahoma City, Oklahoma
Business Administration
Alpha Phi Alpha

Juniors



Baker, Willie G.
Biology
Chickasha, Oklahoma

Beatty, Joyce Ann
Elem. Education
Oklahoma City, Oklahoma



Blakely, David W.
Biolygy
St. Joseph, Missouri

Brewer, Howard A.
Mathematics
Oklahoma City, Oklahoma

Brown, Barbara Inez
Business Education
Tulsa; Oklahoma

Brown, Bobbie Jean
Business Education
Tecumsech, Oklahoma



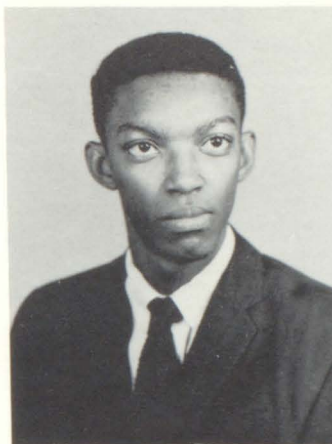
Brown, William D.
Music
Luther, Oklahoma

Burton, Sallye Lucile
Music
Chickasha, Oklahoma



Chapman, George W.
Business Administration
San Antonio, Texas

Clark, Elizabeth Ann
Business Education
Boley, Oklahoma



Clayton, Aurelius
Sociology
McAlester, Oklahoma

Coleman, Harwell
Physical Education
Atlanta, Texas



Coleman, Lester
Mathematics
Atlanta, Texas

Daniels, Billy Jo
Business Education
Oklahoma City, Oklahoma



Foust, Nellie Jeanne
Sociology
Tulsa, Oklahoma

Garrett, Elmer D.
Physical Education
Belton, Texas



Gilyard, Orvil
Music Education
Sand Springs, Oklahoma

Greene, John Charles
Physical Education
Ft. Gibson, Oklahoma



Greene, Wilbur Adolph
Music
Wilmington, North
Carolina

Hall, Jacqueline
Biology
Langston, Oklahoma

Hanley, Edward
Business Administration
Pawhuska, Oklahoma

Harris, Patricia
Sociology
McAlester, Oklahoma



Hawkins, Loretta
Business Education
Okmulgee, Oklahoma

Hawley, Carrie
Education
Dallas, Texas



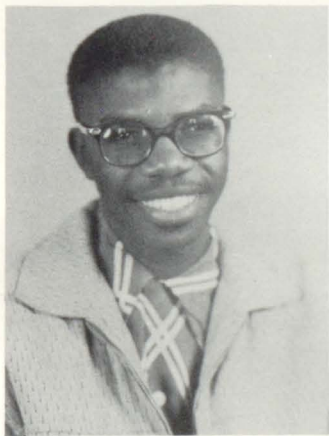
Hayden, Willard
Physical Education
Chickasha, Oklahoma

House, Teolar
Business Education
Lawton, Oklahoma



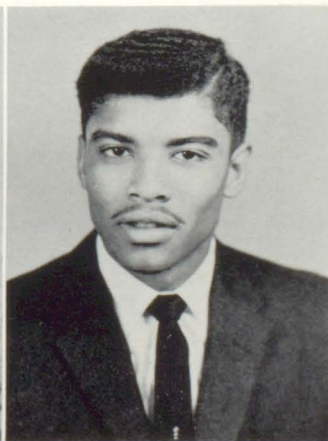
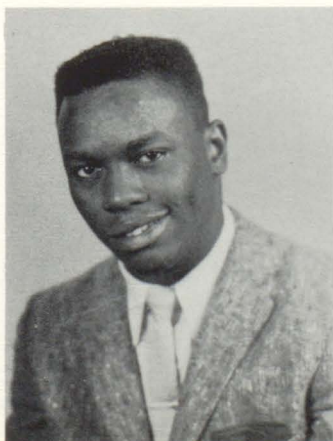
Johnson, Mildred
Home Economics
Newalla, Oklahoma

Johnson, Willie Mae
Business Education
Okmulgee, Oklahoma



Jones, Ray Alfred
Business Administration
Tulsa, Oklahoma

Jones, Virginia
Sociology
Oklahoma City, Oklahoma



Keith, Willard A.
Technical Agriculture
Boswell, Oklahoma

Lamey, William C.
Mathematics
Duncan, Oklahoma



Lawson, Retta M.
Home Economics
Spencer, Oklahoma

McGill, Dezo J.
Biology
Muskogee, Oklahoma



McKinney, Raymond
Industrial Arts
Chickasha, Oklahoma

Malone, Elbert
Music
Lubbock, Texas



Martin, Hosea L.
Music
Tulsa, Oklahoma

Parker, Raymond
Mathematics
Lawton, Oklahoma



Patmon, Ola Lee
Business Administration
Lawton, Oklahoma

Perry, James
Mathematics
Wewoka, Oklahoma

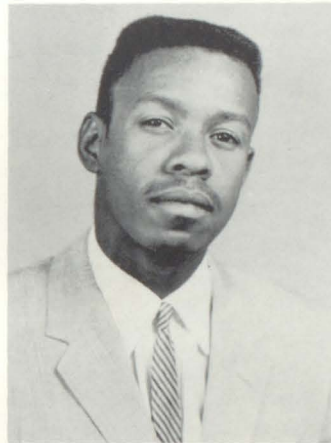
Porter, LaVerne
Business Education
Muskogee, Oklahoma

Quarles, Arnold E.
Music
Clarksville, Tennessee



Reed, Dexter
Industrial Arts
Ponca City, Oklahoma

Reed, Frances H.
Music
Los Angeles, California



Rogers, Maxine
Business Education
Oklahoma City, Oklahoma

Smith, Nezzie
Elementary Education
Wetumka, Oklahoma



Starr, Marva Jo
Business Education
Tahlequah, Oklahoma

Sutton, Arvelene
Business Education
Oklahoma City, Oklahoma



Thrower, Evelyn Gibbs
Art
Tatums, Oklahoma

Tolbert, Bernadine
Chemistry
Porter, Oklahoma



Tomlin, Minda
Sociology
Okemah, Oklahoma

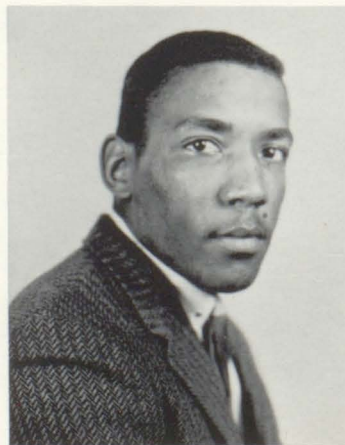
Wallace, Arthur
Agriculture
Muskogee, Oklahoma

Ward, Eddie Faye
Home Economics
Boswell, Oklahoma

Whitaker, Celester
Biology
Langston, Oklahoma

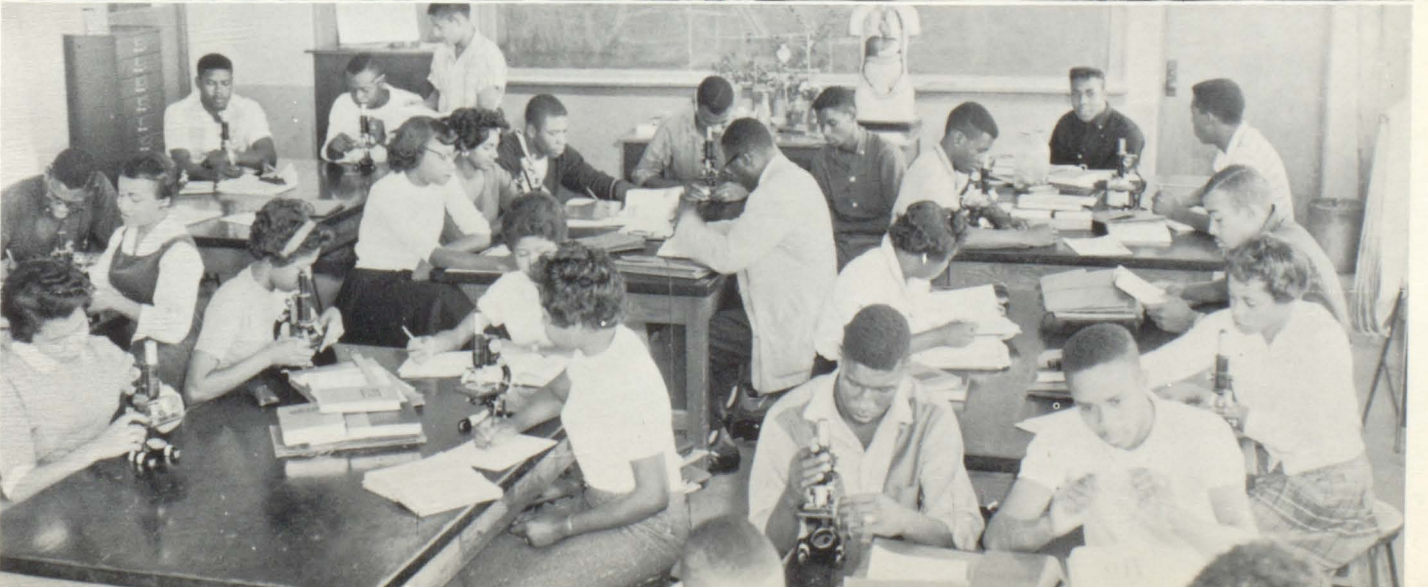
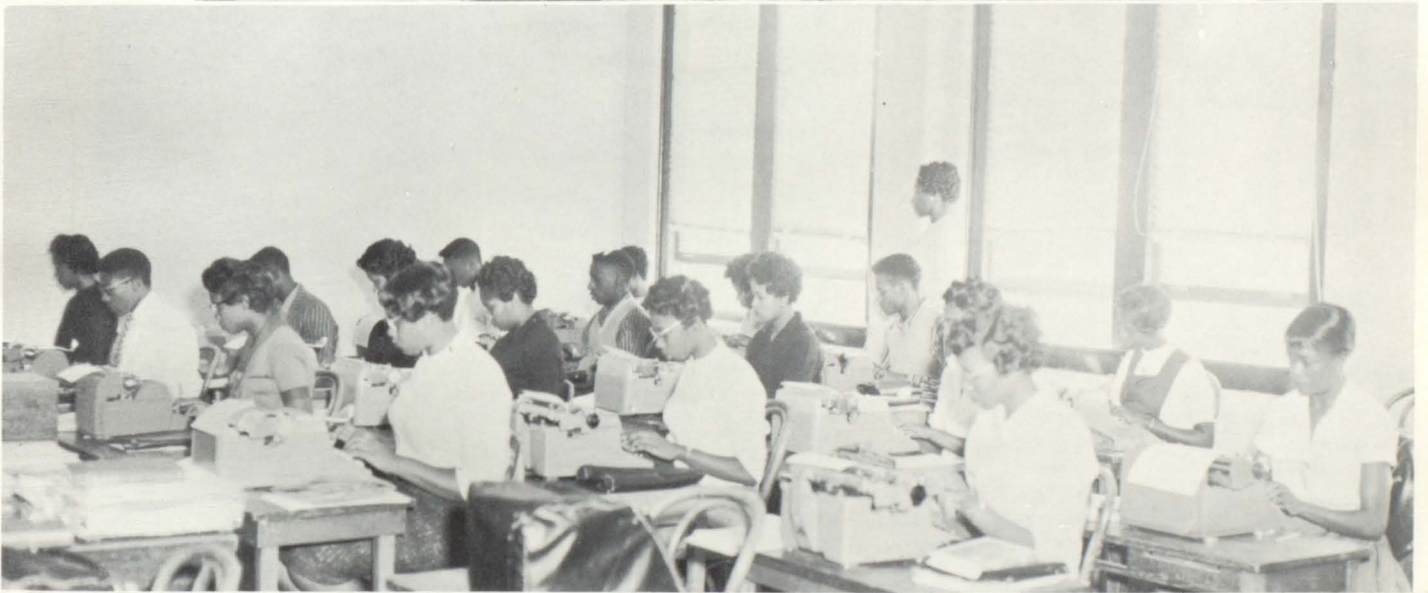


Yates, John
Physical Education
Kansas City, Kansas





*Classroom
Activities*



Sophomores



Alford, Frankie
Wewoka, Oklahoma

Anderson, Barbara
Choctow, Oklahoma

Anderson, Delois
Choctow, Oklahoma



Anderson, Rufus R.
Jackson, Miss.

Anderson, Verlean
Guthrie, Oklahoma

Austin, Neal
Romulus, Mich.

Black, Rufus
Duncan, Oklahoma

Bradley, Wanda J.
Oklahoma City, Oklahoma

Branch, Irma L.
Watonga, Oklahoma



Brown, Maetta J.
McAlester, Oklahoma

Buckner, Robert
Oklahoma City, Oklahoma

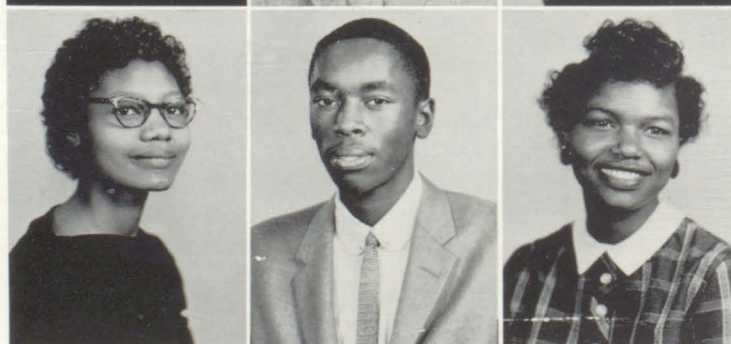
Burks, Veverlene
Spencer, Oklahoma



Butler, Mildred B.
Hugo, Oklahoma

Caver, Howard G.
Chickasha, Oklahoma

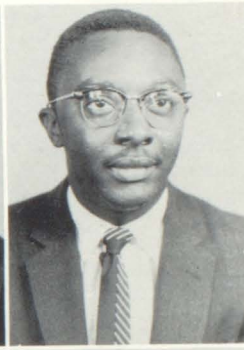
Clark, Marchita J.
Coyle, Oklahoma



Collins, Charlesett
Tulsa, Oklahoma

Combs, Jeanetta G.
Clearview, Oklahoma

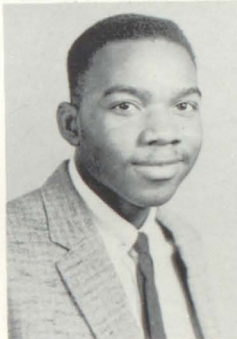
Cooper, Lincoln
Monimia, Liberia



Craven, Sherman L.
Geary, Oklahoma

Crisp, Doris J.
Porter, Oklahoma

Daniels, Don
Lubbock, Texas



Davis, Charles E.
Boley, Oklahoma

Dickson, Robert E.
Amarillo, Texas

Dinwiddie, Gwendolyn
Spencer, Oklahoma



Doolin, R. A.
Guthrie, Oklahoma

Doster, Jaunicezetta
Boley, Oklahoma

Drain, Sim Jr.
Tatum, Oklahoma



Dupins, Carl A.
Little Rock, Ark.

Easley, John
N. W. Roanoke, Virginia

Ellis, John W.
Roanoke, Virginia



Finney, Bettye J.
Webber Falls, Oklahoma

Fisher, Patricia
Nowater, Oklahoma

Fowler, Lessie L.
McAlester, Oklahoma



Giddings, Embry
Oklahoma City, Oklahoma

Grant, Ray
Sand Springs, Oklahoma

Gunn, Bessie Lee
Oklahoma City, Oklahoma

Gunter, Odell
Lawton, Oklahoma

Harper, Samuel
Eufaula, Oklahoma

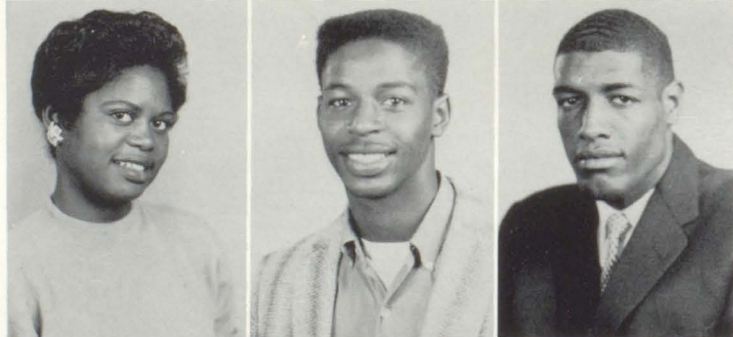
Hayden, Johnetta
Chickasha, Oklahoma



Henderson, Mary Jo
Lubbock, Texas

Higgins, Robert
Oklahoma City, Oklahoma

Hill, Warnie, Jr.
Dallas, Texas



Horn, Lawrence C.
Abilene, Texas

Jefferson, Ralph W.
Oklahoma City, Oklahoma

Johnson, Henry
Oklahoma City, Oklahoma



Johnson, James
Dover, Oklahoma

Jones, Earnest B.
Arcadia, Oklahoma

Lambeth, Della F.
Oklahoma City, Oklahoma



Lamar, Donald
Amarillo, Texas

Lang, Corlandus
Lubbock, Texas

Lewis, Rosemary
Los Angeles, Calif.



Lightfoot, Harold
Ft. Worth, Texas

Littlejohn, Donnie L.
Hugo, Oklahoma

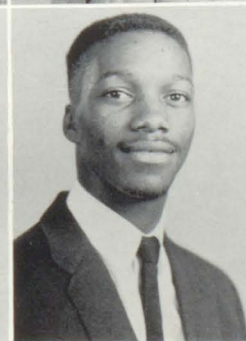
Luster, Ceola
Hugo, Oklahoma



Luster, Maurice
Choctaw, Oklahoma

McCarty, Gloria J.
Grant, Oklahoma

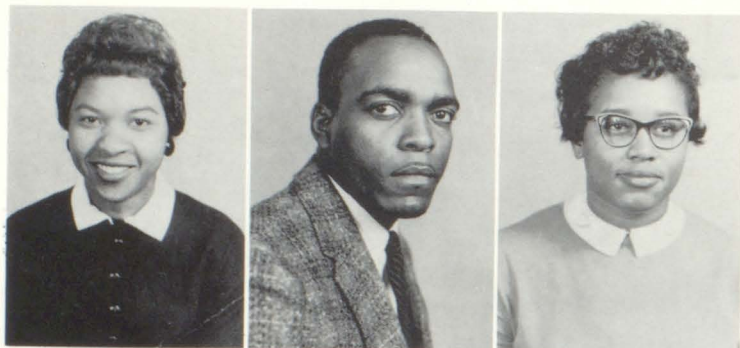
McCarty, Lottie
Grant, Oklahoma



McCain, Alice V.
Duncan, Oklahoma

McIntyre, James D.
Hattiesburg, Miss.

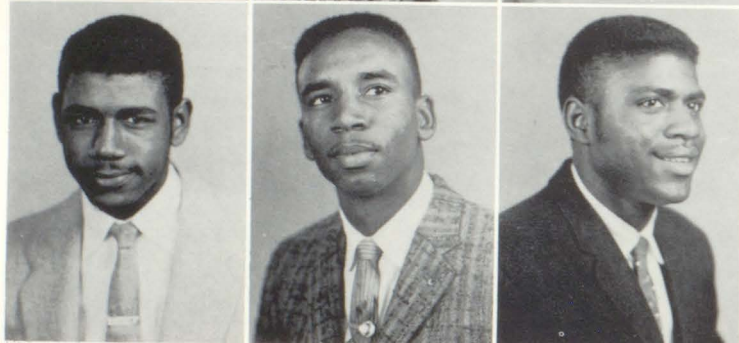
McPhail, James E.
Marshall, Texas



Maloy, LaRuth
Boley, Oklahoma

Masters, Ralph E.
Atoka, Oklahoma

Mayberry, Carleen S.
Taft, Oklahoma



Miles, Cecil
Boswell, Oklahoma

Montague, Jackie
Amarillo, Texas

Moore, Charles
Meridian, Oklahoma

Moore, Lloyd A.
Hugo, Oklahoma

Morrow, Ray
Kaufman, Texas

Nolan, Thomas James III
Little Rock, Arkansas



Owens, Phillip
Enid, Oklahoma

Paschal, Josephine C.
Krebs, Oklahoma

Peery, James
Roanoke, Va.



Perry, Marthann
Oklahoma City, Oklahoma

Perry, Shirley J.
Oklahoma City, Oklahoma

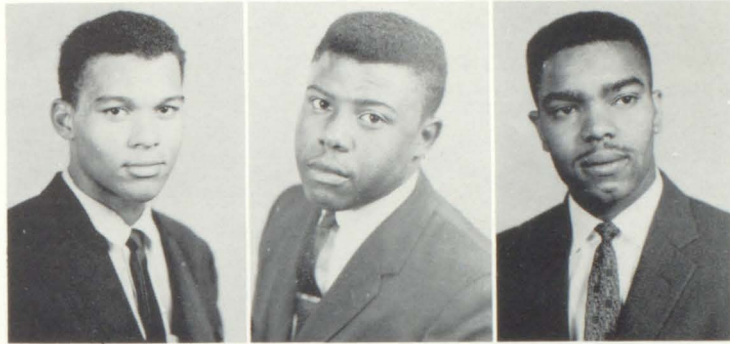
Petty, Vernetta
Tulsa, Oklahoma



Prewitt, Albert
Langston, Oklahoma

Randolph, Johnnie
Sapulpa, Oklahoma

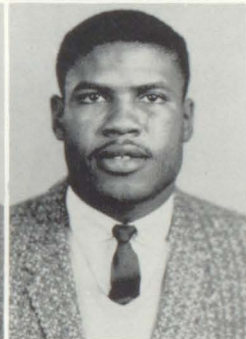
Richmond, Welborne L.
Wewoka, Oklahoma



Robinson, Horace
Little Rock, Ark.

Rogers, George
Wilmendesny, Pennsylvania

Ruff, Floyd
Okmulgee, Oklahoma



Russell, Beverly Marie
Okmulgee, Oklahoma

Shaw, Charles W.
Frederick, Oklahoma

Shipp, Howard
Muskogee, Oklahoma



Smith, Mary K.
Choctaw, Oklahoma

Sullivan, Amanda D.
Cushing, Oklahoma

Tampkins, Gilbert
Choctaw, Oklahoma



Taylor, Carl
Grayson, Oklahoma

Taylor, Shirley V.
Bristow, Oklahoma

Thomas, Rassie R.
St. Petersburg, Florida



Tilford, Willis
McAlester, Oklahoma

Todd, Fredrick
Stroud, Oklahoma

Turner, Dizzy
Amarillo, Texas



Vann, Mary L.
Sapulpa, Oklahoma

Walker, Louise M.
Boley, Oklahoma

White, Wilmer J.
McAlester, Oklahoma

Wiley, Floyd
Tulsa, Oklahoma

Williams, Herman
Oklahoma City, Oklahoma

Williams, Robert
McAlester, Oklahoma



Williams, Shirley J.
Abilene, Texas

Wilson, Leon
Jackson, Miss.

Wilson, Norma J.
Spencer, Oklahoma



Winkler, Kathryne
Tulsa, Oklahoma

Winslett, Hughzetta
Duncan, Oklahoma

Winston, Alonzo L.
Langston, Oklahoma



Wright, O. W.
Lubbock, Texas

Young, Marion
Oklahoma City

Younger, Ruth
Guthrie, Oklahoma

Cook, L. C.
Redbird, Oklahoma



Freshman Class



Abram, Nancy Carolyn
Ardmore, Oklahoma

Allen, Patricia
Oklahoma City, Oklahoma

Amos, Roy Clifton
Oklahoma City, Oklahoma

Anderson, Dewitt C.
Hattiesburg, Mississippi

Anderson, Emma Lee
Tulsa, Oklahoma

Anderson, William Edward
Muskogee, Oklahoma

Andrews, Orvan
Crescent, Oklahoma

Baker, Alice Marie
Tulsa, Oklahoma

Bostic, Lee
Hugo, Oklahoma

Bell, Thomas J.
Oklahoma City, Okla.

Bolden Edward
Grayson, Oklahoma

Bradley, Roselma
Oklahoma City, Okla.

Bradley, Wilma
Oklahoma City, Okla.

Brown, Charles
Guthrie, Oklahoma

Brown, Joe R.
Abilene, Texas

Bagley, Glennon
Oklahoma City, Okla.

Bush, Glendale
Clearview, Oklahoma

Butler, Joe
Lawton, Oklahoma

Byrd, Lloyd
Tulsa, Oklahoma

Cannady, Betty
Muskogee, Oklahoma

Carsey, Kenneth
Abilene, Texas

Clark, Thelma
Hugo, Oklahoma

Cole, Larry
Memphis, Tennessee

Cole, Merline
Idabel, Oklahoma



Collins, Burton A.
Birmingham, Ala.

Combs, Delois A.
Wetumka, Okla.

Combs, Dymple
Clearview, Okla.

Crawford, Mayme
Sand Springs, Okla.

Crenshaw, Patricia
Slick, Oklahoma

Cutliff, Eddie Lee
Shreveport, Louisiana

Daniel, Cora
Wewoka, Oklahoma

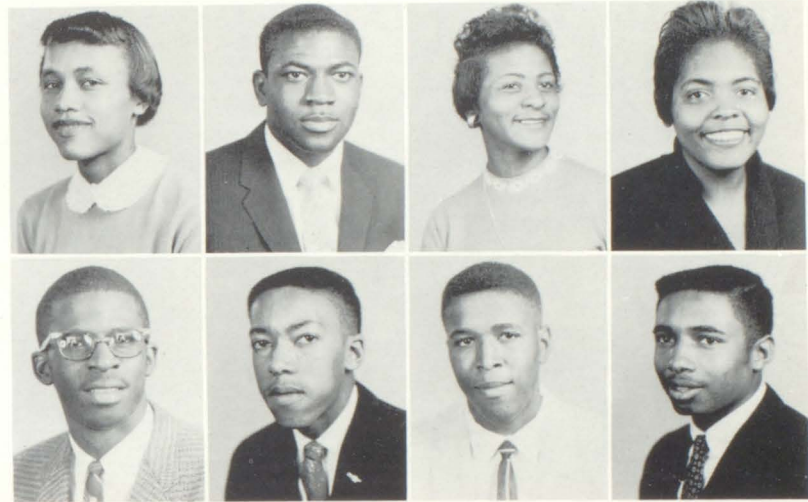
Daniel, Marilyn
Kansas City, Missouri

Day, Earl Edward
Lubbock, Texas

Dennie, Milton
Memphis, Tennessee

Doolittle, Charles E.
Guthrie, Oklahoma

Douglas, Alcardio
Ardmore, Oklahoma



Durant, Birdie Ruth
Slick, Oklahoma

Edwards, Rosetta
Wewoka, Oklahoma

Else, Charles
Terrell, Texas

English, Minnie
Tulsa, Oklahoma

Ford, Lurlene
Camden, Arkansas

Forrest, Bonita Faye
Oklahoma City, Okla.

Foster, Barbara
Kansas City, Mo.

Franks, Thesis
Ardmore, Oklahoma

Frazier, Queen Ethel
Spencer, Oklahoma

Fuhr, Sandra Loise
Okmulgee, Oklahoma

Gaffney, Willie
Amarillo, Texas

Gailey, Louis
Memphis, Tennessee

Gaskin, Albert
Memphis, Tennessee

Gigger, Marcell
Duncan, Oklahoma

Gilmore, Charles
Abilene, Texas

Goodlow, Arquillo
Idabel, Oklahoma

Green, Fred
Memphis, Tennessee



Hampton, Ruth E.
Sawyer, Okla.

Harrington, Edison D.
Muskogee, Okla.

Harris, Archie
Houston, Texas



Harris, Phil
Fort Worth, Texas

Hathorn, Evelyn
Guthrie, Oklahoma

Hathorne, Howard Lee
Guthrie, Oklahoma

Herd, William
Beloyt, Wisconsin

Hickerson, Vernon Ray
Muskogee, Oklahoma

Holloway, Solonia
Boley Oklahoma

Hopkins, Betty Jean
Idabel, Oklahoma

Houston, Juanita Veniece
Boley, Oklahoma

Hudson, Eugene Allen
East St. Louis, Illinois

Hughlon, Thelma
Sapulpa, Oklahoma

Hunter, Bobby
Memphis, Tennessee

Hunter, Carl
Washington, D. C.

Hurte, Willie
Ardmore, Oklahoma

Hyman, Mable Lee
Muldrow, Oklahoma

Jackson, Lorene
Oklahoma City, Okla.

Jacobs, Howard Earl
Fort Worth, Texas

Jefferson, Elwood T.
Oklahoma City Okla.

Johnson, Edna Faye
Taft, Oklahoma

Johnson, L. C.
Ardmore, Oklahoma

Jones, Judy Kaye
Crescent, Oklahoma

Lang, Mareta
Lubbock, Texas

Law, Wilbur
Oklahoma City, Okla.

Lawson, Faye
Spencer, Oklahoma

Leaner, Billy
Chicago, Illinois



Lewis, Maxine
Broken Bow, Okla.

Lignons, Chester
Grayson, Okla.

Loftis, Roye
Ardmore, Okla.

Lott, Eli
Memphis, Tenn.

Lowe, Gladys
Eufaula, Oklahoma

McBride, Raymond Edward
Tulsa, Oklahoma

McCuin, Johnny
Tulsa, Oklahoma

McCollum, Carrie
Fort Worth, Texas

McCowen, Hazel
Camden, Arkansas

McKinnie, George
Memphis, Tennessee

McRae, Shirley Faye
St. Louis, Missouri

Martin, Bobbye Jewel
Eufaula, Oklahoma



Marzett, Virginia
Boley, Oklahoma

Massey, Willie
Memphis, Tennessee

Mitchell, David
Memphis, Tennessee

Mitchison, Leon
Houston, Texas

Moore, Elbert
Okmulgee, Oklahoma

Moore, Floyd
Newkirk, Oklahoma

Moore, Henry
Fort Lauderdale, Fla.

Moore, Loyce
Hugo, Oklahoma

Morris, Frank
Chicago, Illinois

Murdock, Eva Mae
Anadarko, Oklahoma

Nathaniel, Odell
Memphis, Tennessee

Nesbitt, Myrl
Oklahoma City, Okla.

Nivens, Roosevelt
Muskogee, Oklahoma

Overton, Walter Mack
Lawton, Oklahoma

Palmer, Daniel Adolph
Tulhassee, Oklahoma

Parker, Yvonne
Hugo, Oklahoma

Parker, Patricia
Okla. City, Okla.

Parker, Leonard
Lawton, Oklahoma

Parker, Earnest
Okmulee, Oklahoma

Palmer, Elmer
Dover, Oklahoma



Patrick, Verdalee B.
Tulsa, Oklahoma

Perry, Robert
Memphis, Tennessee

Phillips, Robert L.
Wewoka, Oklahoma

Poole, Lonzetta
Luther, Oklahoma

Pratt, J. C.
Eufaula, Oklahoma

Pugh, Jimmy
Memphis, Tennessee

Qualls, Edward
Gibbsland, Louisiana

Randle, Charles
Ft. Worth, Texas

Randolph, Edd
Sapulpa, Oklahoma

Ransom, James
Memphis, Tennessee

Reece, Walter T.
Muskogee, Oklahoma

Robinson, John
Oklahoma City, Oklahoma

Roquemore, Mattyella
Oklmulgee, Oklahoma

Rose, Mildred
Lawton, Oklahoma

Scody, Billy
Lubbock, Texas

Shead, Roosevelt
Abilene, Texas

Shegog, Bonnie Kate
Lawton, Oklahoma

Shelton, Thornton
Kansas City, Missouri

Shipp, Betty Lue
Muskogee, Oklahoma

Simpson, Willie
Memphis, Tennessee

Singer, Warren
Guthrie, Oklahoma

Smith, Donald Lee
Ardmore, Oklahoma

Smith, Lynn Etta
Meridian, Oklahoma

Smith, Omar
Choctaw, Oklahoma

Smith, Samuel G.
Stockton, California



Snoddy, Billy Joe
Claremore, Oklahoma

Snoddy, William
Claremore, Oklahoma



Smith, Levi Thomas
Tulsa, Oklahoma

Steger, Ralph James
Guthrie, Oklahoma

Stephens, Kermit
Washington, D. C.

Stevens, James Jr.
Boley, Oklahoma

Summers, Charles D.
Oklahoma City, Oklahoma

Taylor, Annetta
Oklahoma City, Oklahoma

Thomas, Charles
McAlester, Oklahoma

Tilly, Joe Louis
Oklahoma City, Oklahoma



Toliver, Betty Lou
Enid, Oklahoma

Tunley, Clarence
Okmulgee, Oklahoma

Vann, Ray Eugene
Chouteau, Oklahoma

Yarborough, Alexander
Washington, D. C.

Young, Eva
Boley, Oklahoma

Wade Marcellus
Guthrie, Oklahoma

Wagoner, Odessa Louise
Wynnewood, Oklahoma

Walker, Marie
Clearview, Oklahoma

Walters, Harry Tony
Hugo, Oklahoma

Walton, Emily Anne
Bartlesville, Oklahoma

Ware, Joyce Ann
Meridian, Oklahoma

Watson, Arnold Dean
Ardmore, Oklahoma

Webster, Edgar L.
Idabel, Oklahoma

West, Eddie
Lawton, Oklahoma

White, Geraldine
St. Louis, Missouri

White, Isaac
Las Vegas, Nevada

White, Willie
Amarillo, Texas

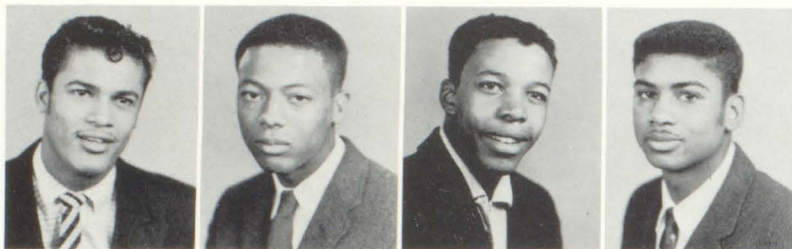
Whitmore, Donald
Amarillo, Texas

Wigley, Steve
Memphis, Tennessee

Williams, George
Grant, Okla.

Williams, Jimmy
Abilene, Texas

Williams, Van
Fort Worth, Texas



Wilson, Charles
Venice, Calif.

Wilson, Elwood
Okmulgee, Okla.



Class in Biology

Two freshmen
enjoying the snow





OFFICE OF THE PRESIDENT
(Aline Johnson, Secretary, Dr. D. L. Harrison, and Jeanetta Combs, student)

OFFICE OF THE ADMINISTRATIVE DEAN
(I. A. Breaux and Bernice Thompson, Secretary)





OFFICE OF THE REGISTRAR

OFFICE OF THE DEAN OF INSTRUCTION

OFFICE OF PUBLIC RELATIONS



THE BUSINESS OFFICE



Dr. Louise Stephens interviewing a student-teacher.



Mrs. E. R. Davis, Librarian





Personnel Department of Reserve Unit and Classroom activities



A Class in Cosmetology



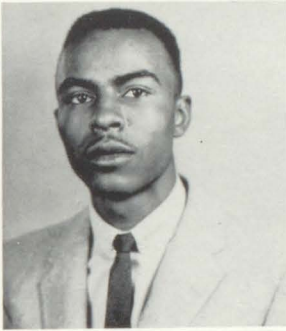
Mrs. N. B. Dillon and student-typist, Evelyn Hathorn

Juniors And Seniors



Edwards, Viann
Senior

Foust, Nellie Jean
Senior



Harris, Joe Glenn
Junior

Hillmon, Joe W.
Senior



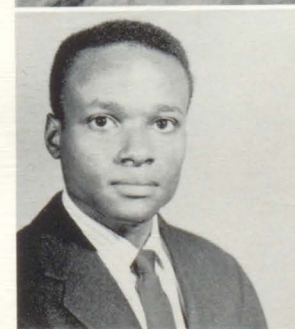
Love, Harold
Junior

Patmon, Frederick
Junior



Reed, Frances
Senior

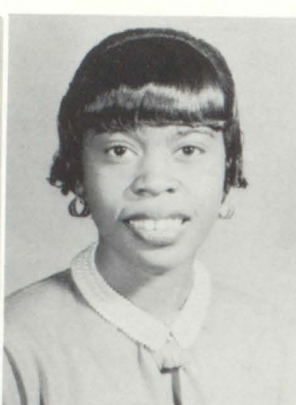
Smith, Luther Edward
Senior



Warren, Elijah
Senior

Williams, Ned
Junior

Freshmen And Sophomores



Cunningham, Eugene
Freshman

Derrick, George
Sophomore

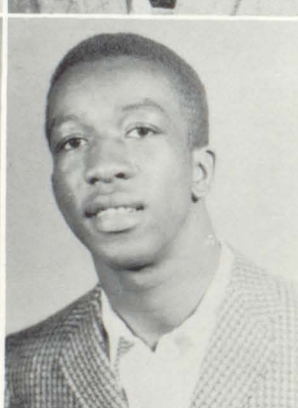
Gist, Willia Etta
Freshman



Hilbert, Gloria Dean
Sophomore

Meadows, Marilyn
Sophomore

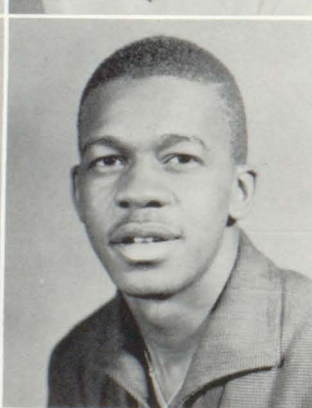
Nash, Edward L.
Freshman



Randolph, Ed
Freshman

Richardson, Maxine
Freshman

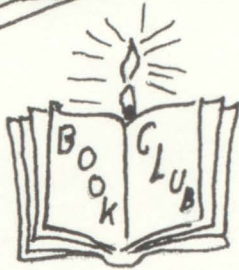
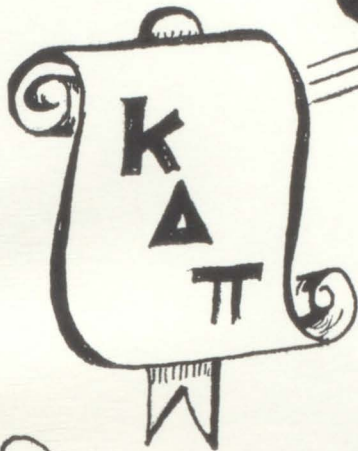
Roundtree, Elliott
Freshman



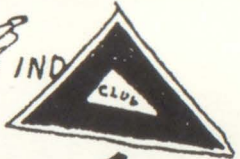
Whitmore, Arnold P.
Freshman

Williams, Theopolis
Sophomore

Organizations



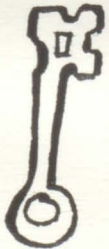
SPHINX



FASHIONETTA



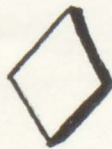
LAMPS



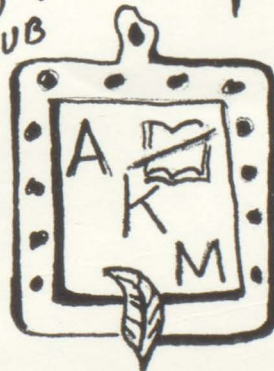
CHURCH
S.C.A.



DEB-BALL



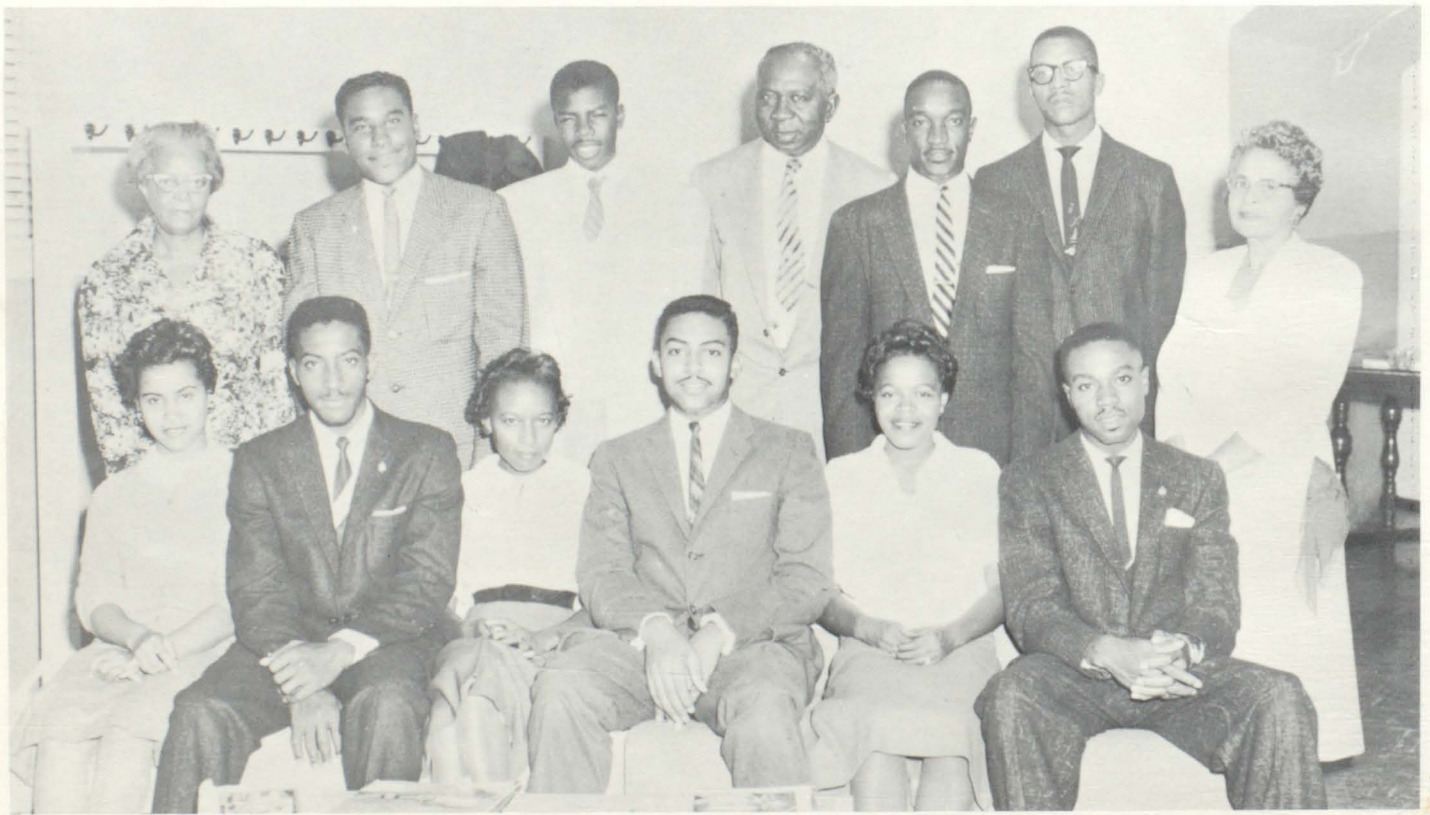
SCROLLERS



I.J. COTTON



Kappa Delta Pi Holds Initiation



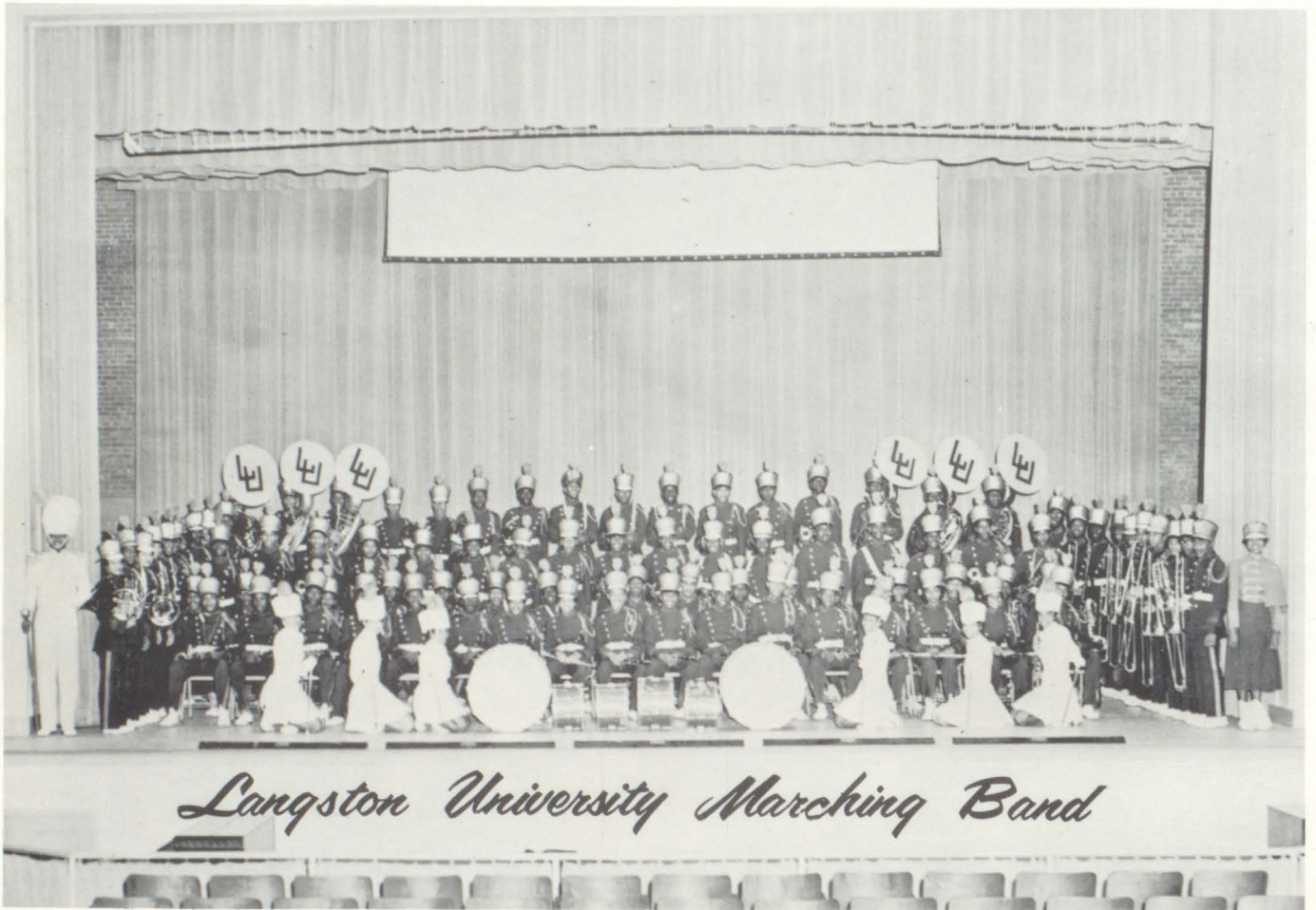
Alpha Kappa Mu



Mathematics Club



Future Teachers Of America





Langston Collegians

KAPPA KAPPA PSI BAND FRATERNITY

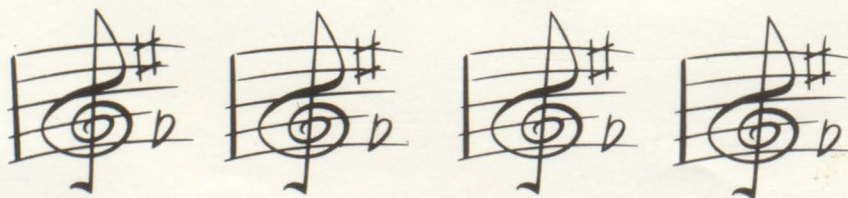


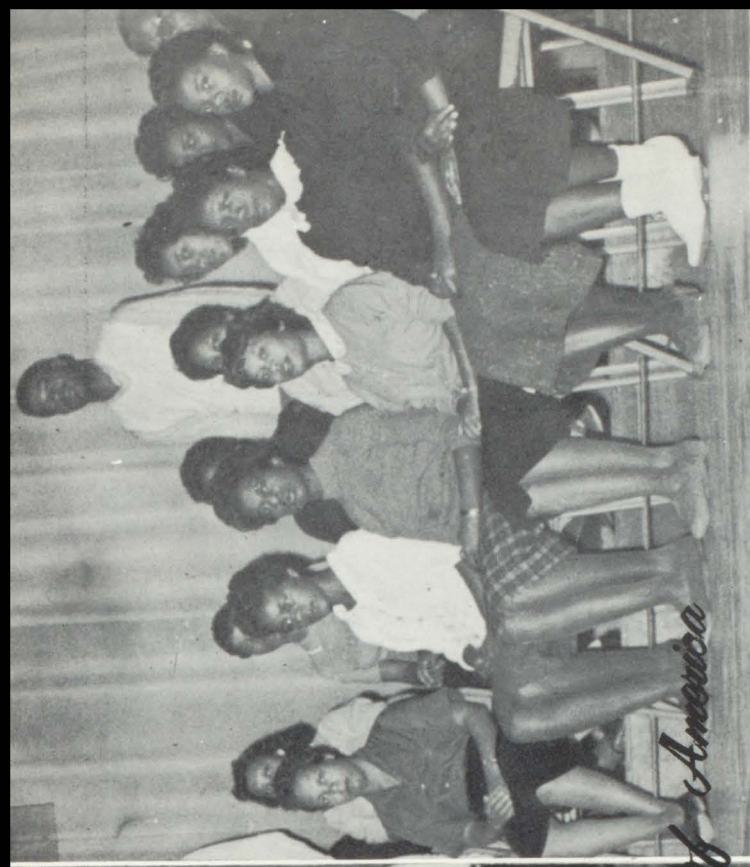
Delta Alpha Chapter

Langston University A Capella Singers



First Row—Left to Right: Christine Coleman, Frances Reed, Junita Pierson, Doriscella Jackson, Ann Walton, Maxine Richardson, Gloria McCarty, Bonnie Shegog, Mayme Crawford, Faye Lawson, Maetta Brown, Lucille Burton, Lonzette Poole, and Lessie Flower. Second Row—Left to Right: Henry Dillard, Thomas Boll, Thomas Smith, Charles Thomas, James Ransom, Billy Scody, Robert Brazelton, Edward Qualls, Earl Day, Albert Gaskin, Edd Randolph, William Brown, Floyd Wiley, Hebert Hagler, Ellittott Roundtree, Leon Mitchison, and Morris Atkinson.

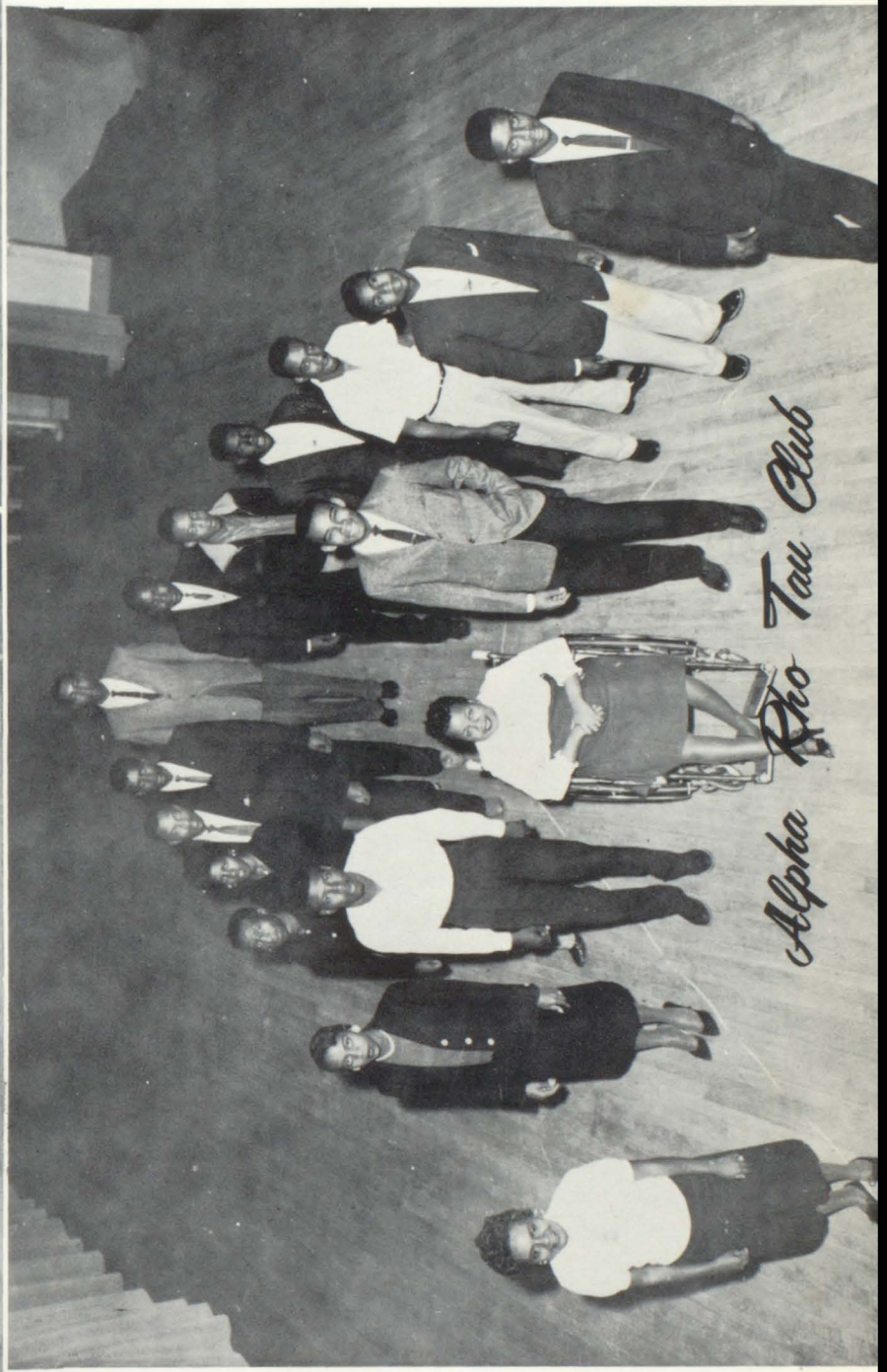




Future Business Leaders of America



Future Business Leaders of America



Alpha Rho Tau Club



The "Aggie Club" of 1958-59

Agricultural majors look with confidence to careers in Agricultural Business and Animal Production. The programs have been revised to these ends.



Calvin Crenshaw



Dr. H. J. Battle and Mrs. E. Maloy, Sec.

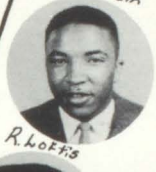
BIG



J. Abram



N. Abram



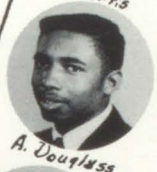
R. Loeffs



H. Johnson



Sandra Fuhr



A. Douglass



W. Stevenson



L. C. Johnson



A. Johnson



A. Watson



D. Smith



B. Hurte



R. Varner



T. Franko



E. Thrower



S. Drwin



H. Winslett



T. M. Cripe



J. Jordan



G. Johnson



R. Johnson

CLUB



Pan-Hellenic Council

REPRESENTATIVES

LEFT TO RIGHT: Seated: Laveria Jackson, Zeta Phi Beta Sorority, Rose Varner, Delta Sigma Theta Sorority, Winona Stevenson, Delta Sigma Theta Sorority, Phoebe Hall, Zeta Phi Beta Sorority, Andrea Johnson Freeman, Alpha Kappa Alpha Sorority, Patricia Harris, Delta Sigma Theta Sorority, Odie Mae Hopkins, Alpha Kappa Alpha Sorority. Standing: Maurice Spears, Kappa Alpha Psi Fraternity, Aurelius Clayton, Alpha Phi Alpha Fraternity, David Blakeley, Kappa Alpha Psi Fraternity, Weldon Miles, Phi Beta Sigma Fraternity, Howard Brewer, Omega Psi Phi Fraternity, Richard Nealy, Phi Beta Sigma Fraternity, Arthur Wallace, Alpha Phi Alpha Fraternity, George Deckard, Alpha Phi Alpha Fraternity, James Abram, Kappa Alpha Psi Fraternity, Arnold Quarles, Omega Psi Phi Fraternity.



Pyramids of Delta Sigma Theta Sorority



Crescents of Phi Beta Sigma Fraternity



Sphinx of Apha Phi Alpha Fraternity



Scrollers of Kappa Alpha Psi Fraternity



Lamps of Omega Phi Psi Fraternity



Archonians of Zeta Phi Beta Sorority



Ivy Leaf Club of Alpha Kappa Alpha Sorority



Donald
Lamar



Embry
Giddings



Weldon
Miles



R. A.
Doolin



Willard
Keith



(no picture)

Rayfield
Sanders

S
P
O
N
S
O
R



Paul O. Brooks

84



*Phi Beta
Sigma*

P
R
E
S
I
D
E
N
T



Leo Townsell

TREASURER



Richard
Nealy

SECRETARY



Morris
Atkinson

Jackie
Montague



Dizzy
Turner



James
McIntyre



Leon
Winston



Sim
Drains



Cecil
Miles



Zeta Phi Beta Sorority



LAMBDA ALPHA CHAPTER

Zeta Phi Beta Sorority was founded at Howard University, January, 1920
Lambda Alpha Chapter was founded at Langston University, 1937



Archonian Club

Omega Psi Phi Fraternity

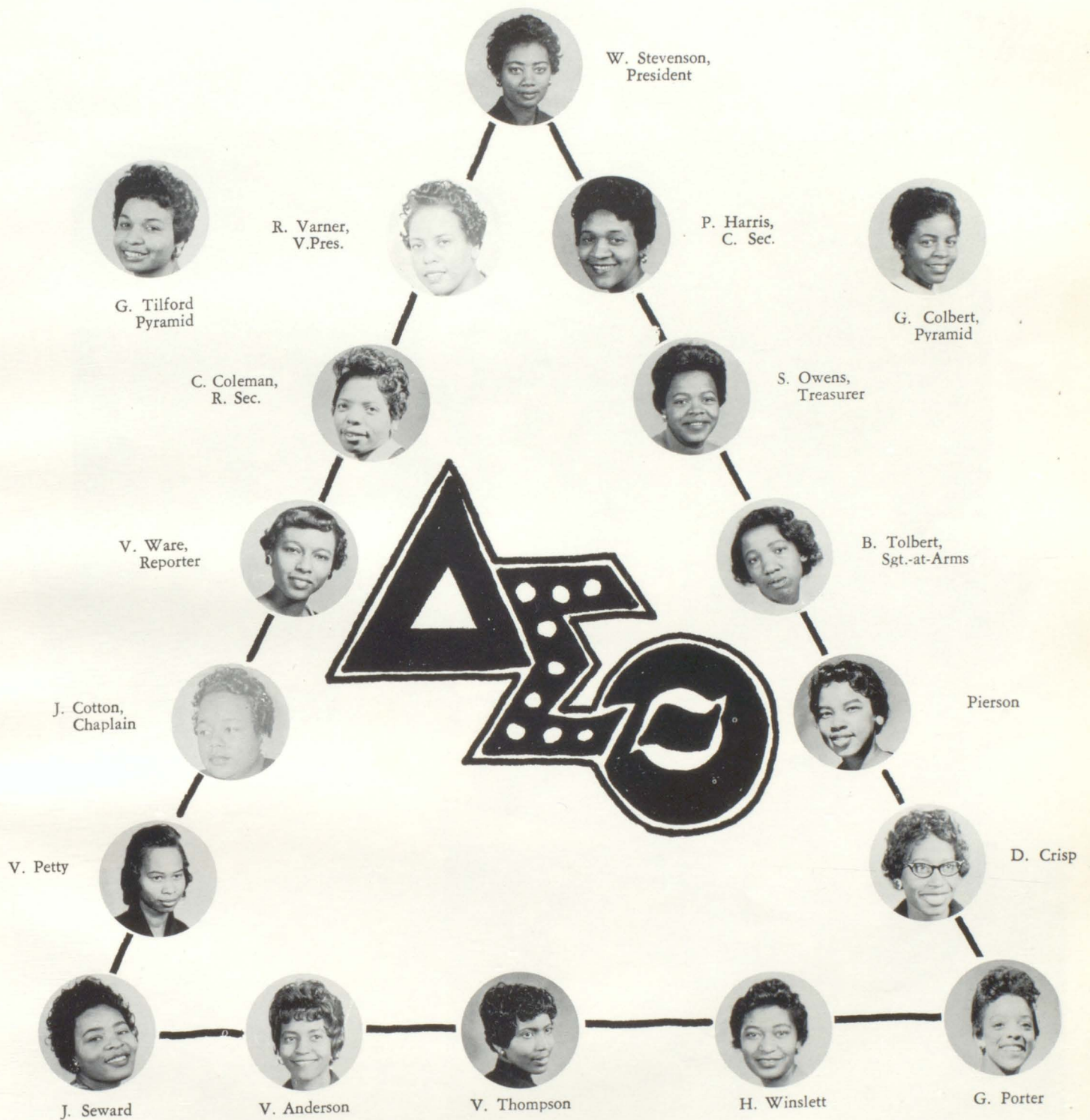
Phi Psi Chapter



OFFICERS

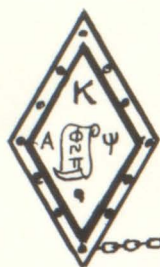
Herman McKinney, Basileus; William Lamey, Vice-Basileus; Lafayette McKinney, Keeper of Records; Howard Brewer, Keeper of Finance; Arnold Quarles, Second Vice District Representative of Ninth District

Delta Sigma Theta Sorority



Beta Upsilon Chapter

I. J. COTTON



ΑΠ

Alpha Pi Chapter
Kappa Alpha Psi Fraternity



READING CLOCKWISE: James Abram, John Yates, Maurice Spears, Harold Washington, Cassell A. Lawson, William Aldridge, Alexander Springs, James Mosley, Otis McCray, Willis Tilford, C. Felton Gayles (Adviser), Marquess Alexander, Adolphe Greene, Maurice Luster, Charles Smith, A. Harold Love, Gilbert Tampkins, Elmer Garrett, and David Blakley.



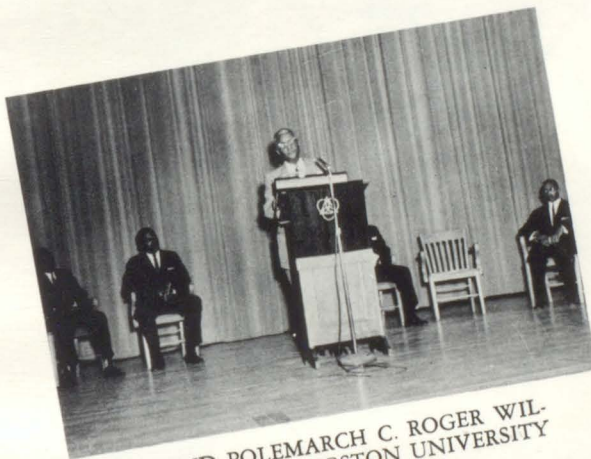
OFFICERS

| | |
|-------------------------------|--------------------|
| Polemarch | James Abram |
| Vice-Polemarch | James Mosley |
| Keeper of Records | Maurice Spears |
| Keeper of the Exchequer | A. Harold Love |
| Strategus | John W. Yates |
| Lt. Strategus | Otis McCray |
| Dean of Pledges | Alexander Springs |
| Historian | Marquess Alexander |
| Adviser | C. Felton Gayles |

Scroller Club



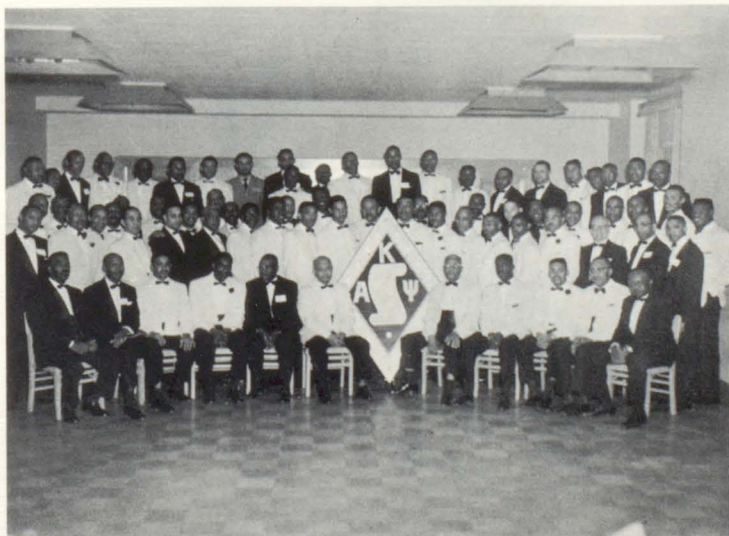
Front row l to r: Thornton E. Shelton, Robert Buckner, Odell Gunter, Carl Dupins, Howard Shipp.
Second row: Sherman Craven, Henry Johnson, Herman Williams, and Al Bert Prewitt, Jr.



GRAND POLEMARCH C. ROGER WILSON VISITS LANGSTON UNIVERSITY



A KAPPA BANQUET



Kappa at 25th Anniversary of Alpha Pi Chapter



Six New Kappas

Alpha Kappa Alpha Sorority



Norma Harmon



Andrea Johnson



Mable Holloway



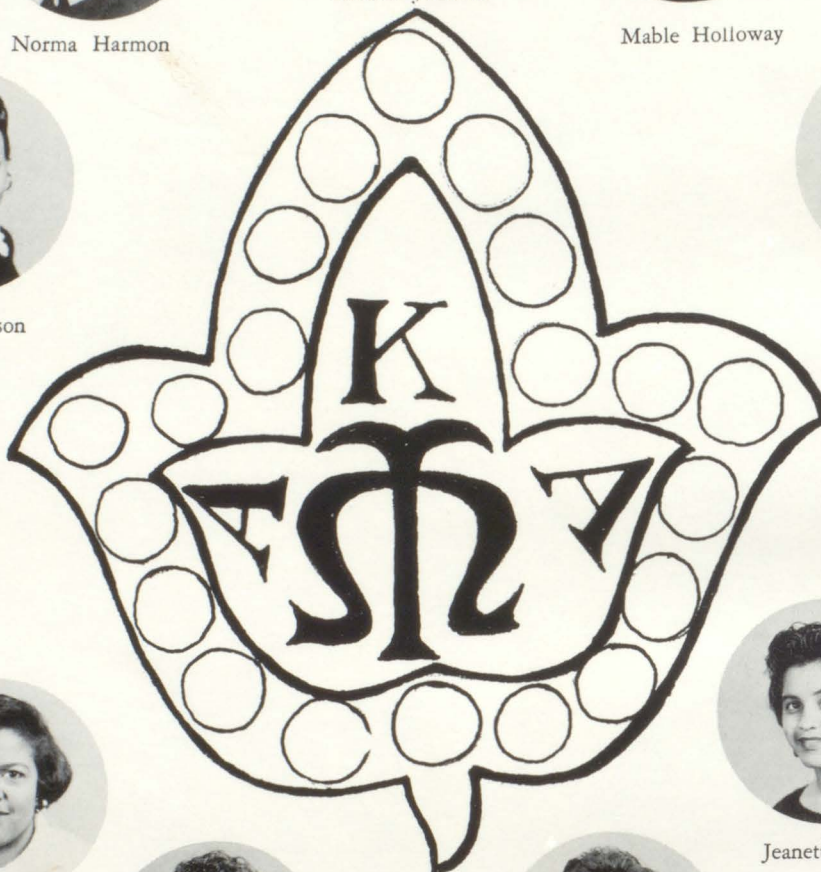
Retta Lawson



Opa! Combs



Gloria McCarty



Minda Tomlin



Ola Patmon



Jeanetta Combs



Viann Edwards



Marion Young



Miss Lenouliah Gandy
Sponsor



Odie Mae Hopkins
Basileus



Maurice Jackson



Harold Lightfoot



Elijah Warren



Corlandus Lang



Elroy Lee



Edward L. Hanley



G. Deckard



O. Sneed



D. Cooksey



Elbert Malone



Henry Dillard



A. Wallace



Thomas Nolan III



Aurelius Clayton



A. Stevens



Luther Smith



C. Wallace



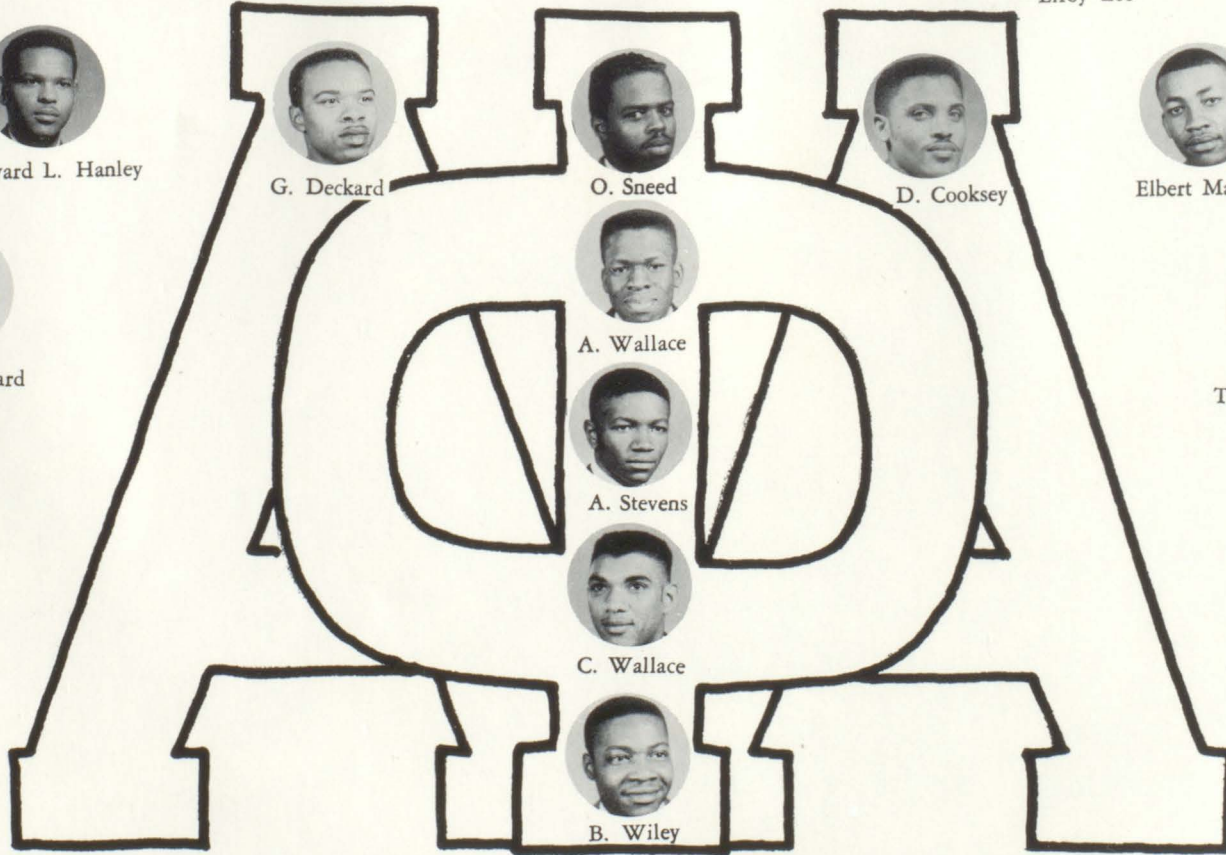
Harold Toliver



Willie Baker



B. Wiley



*Beta Kappa Chapter
Alpha Phi Alpha Fraternity Inc.*

March 12, 1932

I. J. COTTON



The Pyramid Club

Philorati Club



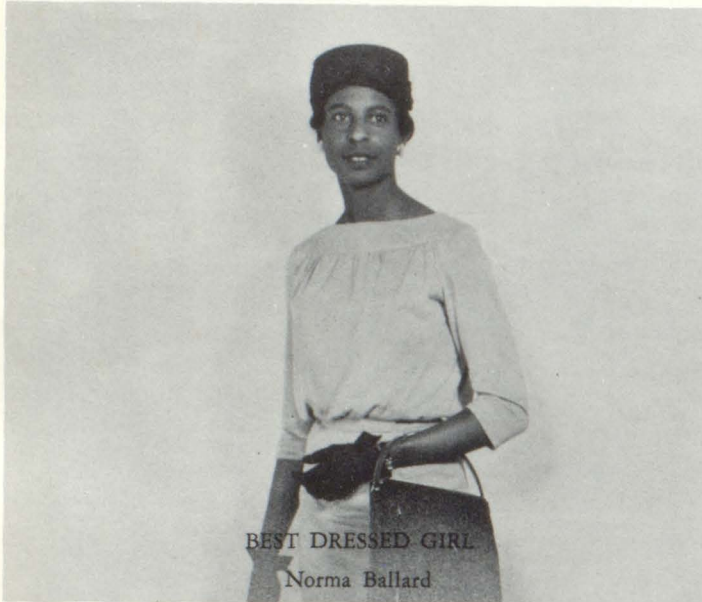
LEFT TO RIGHT: Irma Tryon, Wilmer White, Frankie Alford, Billie Daniels, Doriscella Jackson, Jean Esther Haynes, Shirley McBee Owens, Nellie Foust, Mattie Price, Virginia Jones, and Shirley Washington.
PICTURES NOT SHOWN: Julia Seward, Sandra Parker, Nezzie Smith, and Lucille Burton.

Key Club



LEFT TO RIGHT: Shirley Williams, Beverly Russel, Josephine Paschal, Mary Jo Henderson, Irma Branch, and Ruth Younger.

Who's Who In The Senior Class



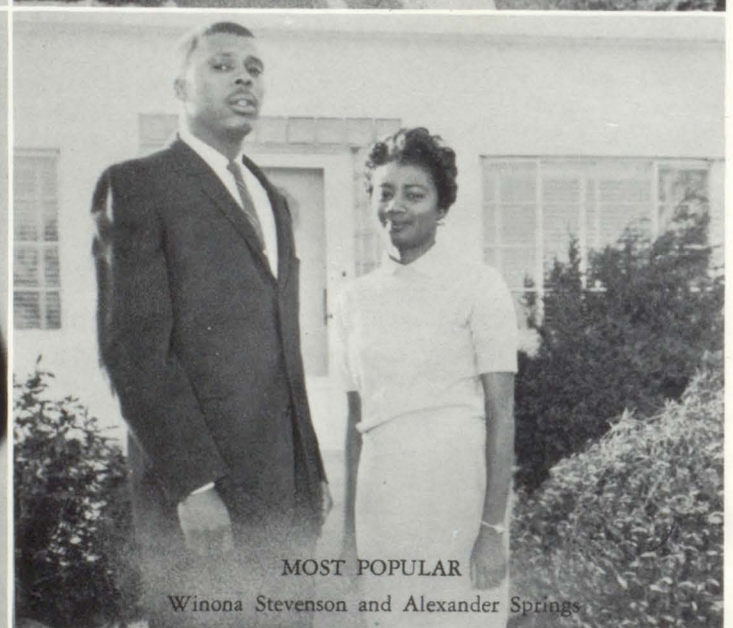
BEST DRESSED GIRL
Norma Ballard



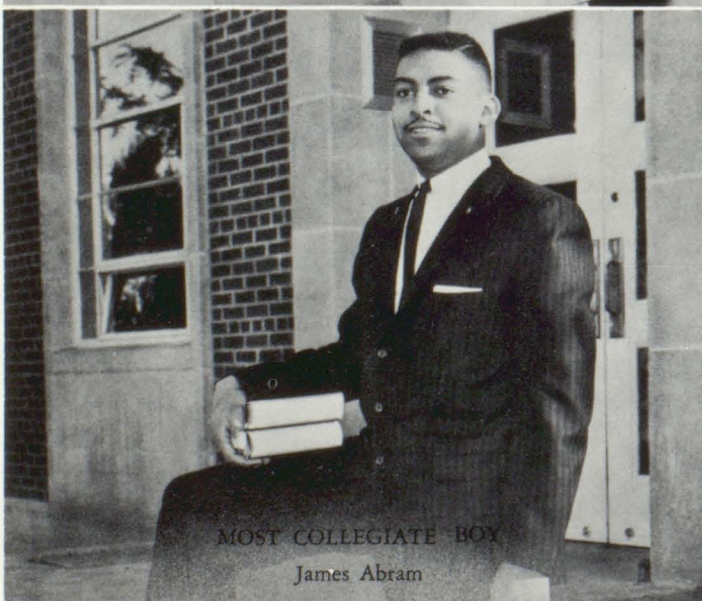
BEST DRESSED BOY
James Mosley



BEST DANCERS
Gladys Colbert and Andrew Hopkins



MOST POPULAR
Winona Stevenson and Alexander Springs



MOST COLLEGIATE BOY
James Abram



MOST COLLEGIATE GIRL
Andrea Johnson



BEST PERSONALITIES
Geraldine Tilford and Rayford Harrington



MOST BRILLIANT GIRL

Shirley McBee Owens



MOST TALENTED
Shirley McBee Owens and Gerald Tilford

MOST BEAUTIFUL GIRL
Versadell Thompson



MOST BRILLIANT BOY



Rayford B. Harrington



Football Queen

Donnie Littlejohn



Miss Homecoming

Norma Ballard



Sigma Sweetheart

Ann Walton



Alpha Sweetheart

Jeanetta G. Combs



Kappa Sweetheart

Arvelene Sutton

Omega Sweetheart

Verlean Anderson



The Annual Staff Sweethearts



Opal Combs



Rose Marie Varner

Langston University Gazette

Juanita Cotton

Coetta Berry Gets Boston U. Grant

The Boston University School of Social Work announces that Coetta Lou Berry has been given a United States Public Health Traineeship for graduate training in Psychiatric Social work in the amount of \$1,800 for first-year level and \$2,000 for second-year level. This traineeship is not subject to federal income tax and is awarded through recommendation of the school.

Langston Looks Ready for Bowl Clash Saturday

PRAIRIE VIEW—(Sp)—Coa Felton (Zip) Gayles' Langston Lions ended their heavy contact drills at Blackshear Field here Tuesday in preparation of their Jan 1 clash with the Prairie View Panthers in the 31st Prairie View Bowl.

L. U. Lions, 68 Bethany Sweded, 63

The Langston Lions won the 2nd game of the season Thursday, December 18, by outlasting the Bethany Sweded 68-63 in a squeaker at Langston.

Nine L. U. Students Selected for Who's Who

Nine students of Langston University have been selected by a committee to represent the institution in *Who's Who Among Students in American Universities and Colleges for the Academic Year, 1958-59.*

Tree Dedicated To G. L. Harrison

One of 256 trees planted in a major land conservation program at the Thor Research Center for Better Farm living near Marengo, Illinois, has been dedicated to G. L. Harrison, President, Langston University, Langston, Oklahoma.

Langston, competing in the state playoffs for the first time after finishing its first year of campaigning in the Collegiate conference, owns the best offensive mark of any playoff entrant. Southeastern, where coach Bloomer Sullivan teaches how to defend first and how to shoot second, yielded an average of only 50.4 points in conference play.

Here's the offensive-defensive table on the four competing teams:

National Defense Committee Appointed

Dr. G. L. Harrison has appointed Dr. A. C. Shropshire, Director, Division of Education to serve as chairman of the committee on the National Defense Counseling and Guidance Training Institute Program.

Amelia R. Taylor Receives Award

Mrs. Amelia R. Taylor, assistant professor in the Department of Music, was honored as outstanding alumnus of the year by Langston University Club of Los Angeles.

Ardmore Principal Banquet Speaker

The University Cafeteria was the setting for the Annual Football Banquet held December 2, 1958, honoring the Langston Lions Squad.

After the meal, Mr. Batchelor presented the speaker for the evening, Mr. H. F. V. Wilson, Supervising Principal of the Ardmore Schools, was the speaker of the hour.

Student-Artist Wins Placement

Miss Juanita Irabell Cotton, a senior student in art at Langston University won the unique student distinction of having three pieces accepted by the 40th Annual Exhibition of the Association of Oklahoma Artists. They were "Cimarron Washout," oil; "Hand Dish," ceramic; and "Vase," ceramic.

Harlem Magicians Trounce Boston Shamrocks

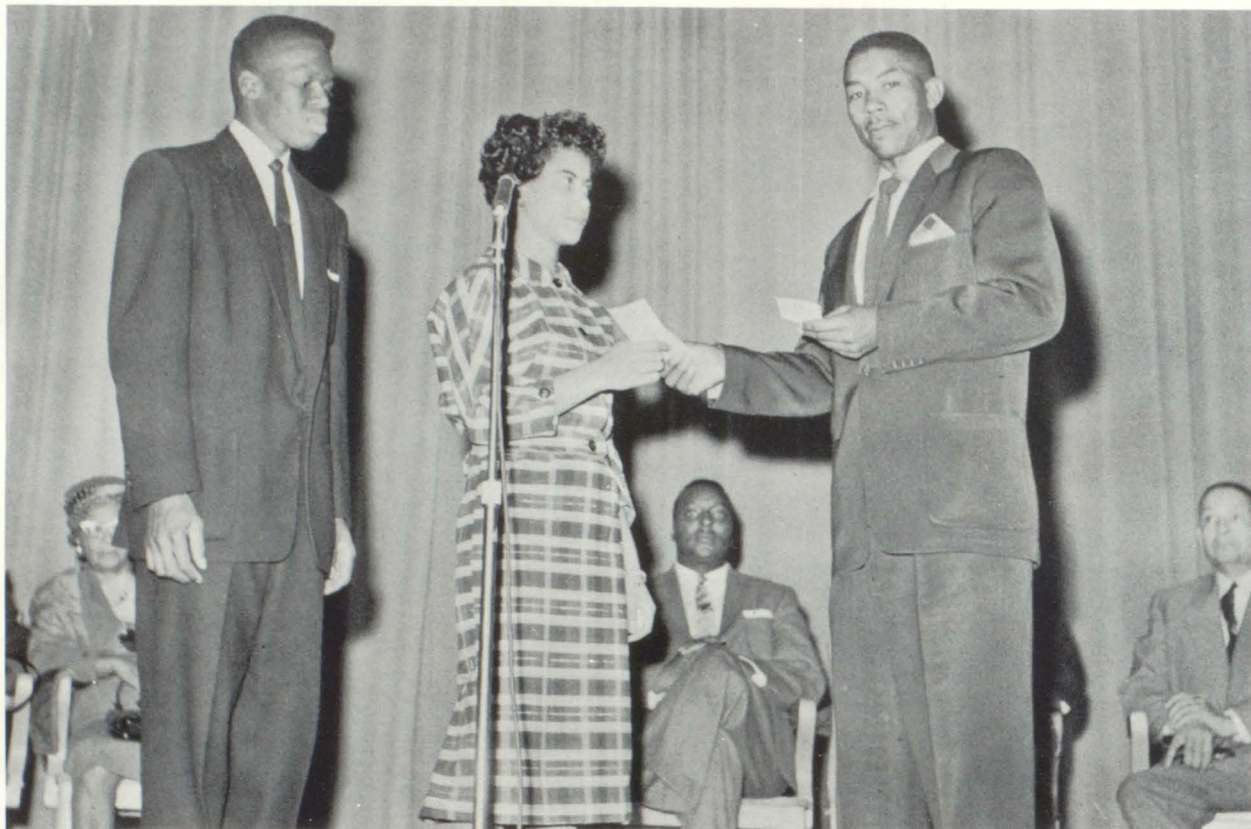
The Harlem Magicians of Marquess Haynes, an illustrious graduate of Langston University from Sand Springs, Oklahoma, brought his aggregation to Langston on December 3 to perform against the Boston Shamrocks, which the Harlem Magicians, led by Haynes came out victorious 82-74.

Langston's live reading scores are James Mosley, third with 275 points; James Johnson, 10th with 222; Bennie Lewis, 15th with 196; Calvin Crenshaw, 18th with 183; and Adolphie Greene, 19th with 181.

Cheerleaders



Scholarship Winners



Arthur Wallace, Junior; Opal Combs, Senior; James Roy Johnson, making the presentation of the Langston University Alumni Association Scholarship award.



M. C. Allen presenting the Alpha Kappa Alpha Sorority award to Verlean Anderson.

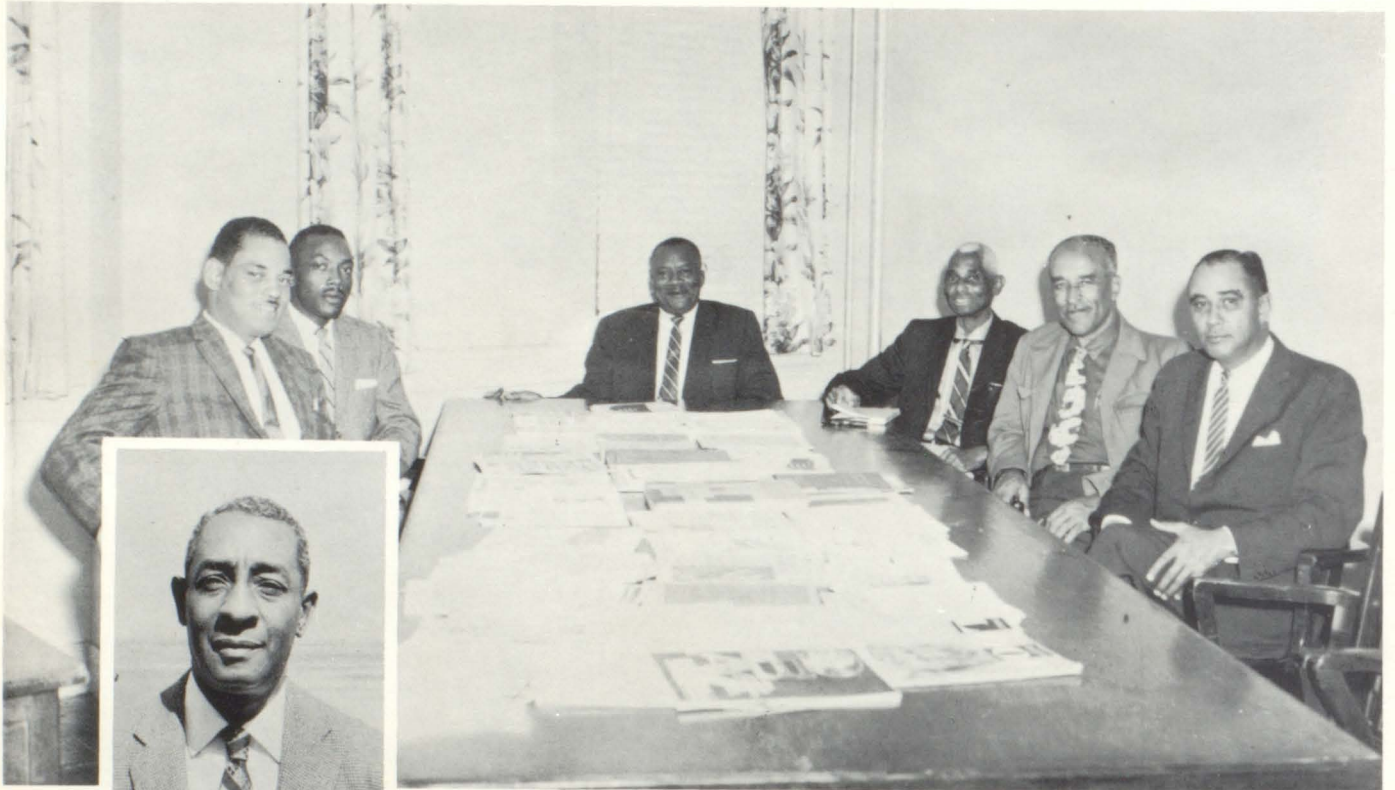


Evelyn Hathorn, winner of the Local Chapter, Langston University Alumni Scholarship award.



A.J. Cotton

Athletic Council



C. Felton "Zip" Gayles
Director of Athletics



T. M. Crisp,
Coach



Bernard Crowell,
Assistant Coach

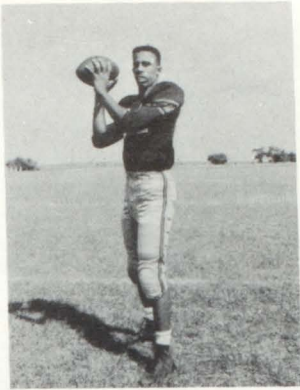


Raymond C. Johnson
Assistant Coach

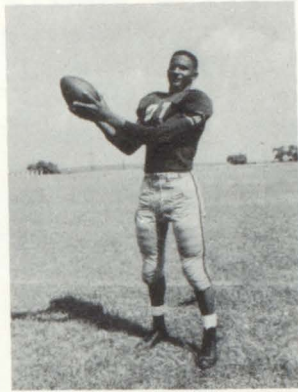
Football Team



Football Players



Leo Hopson



Horace Robinson



Ray Morrow



Howard Shipp



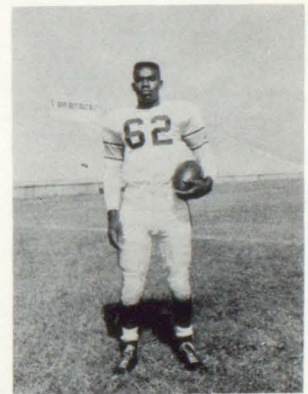
Carl Dupins



Donald Smith



Otis McCray

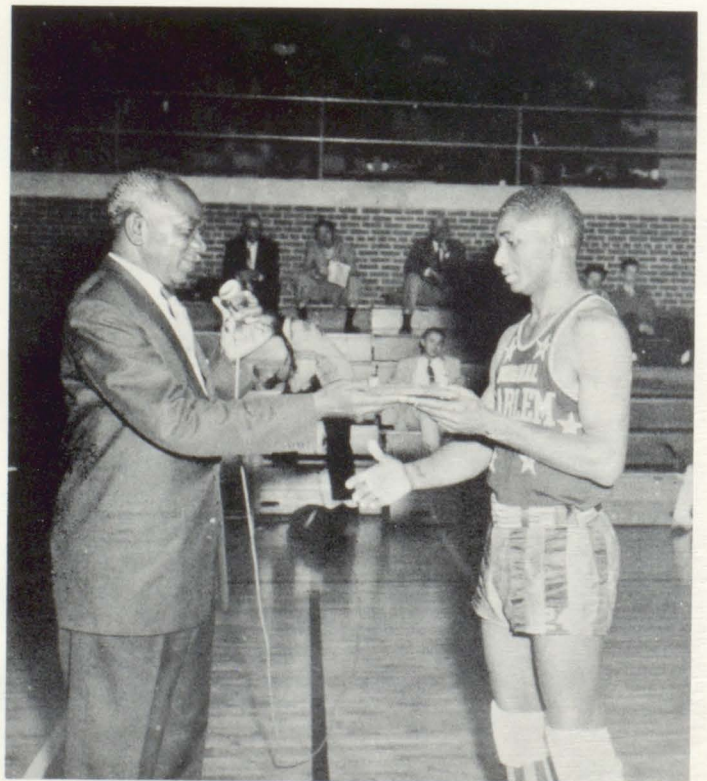


Charles Smith
(captain)

Basketball Team



1st Row: Left to right, Avon Lawson, Marquess Alexander, Otis McCray, James Mosley, Calvin Crenshaw, Adolph Greene, Alexander Springs. 2nd Row: Bennie Lewis, Henry Johnson, Sherman Cravens, Robert Dickson, Robert Johnson, Robert Buckner. 3rd Row: Britt Booker, Warnie Hill, Billy Leaner, George Rogers, Elmer Palmer. 4th Row: Jimmie Pugh, Frank Morris, Omar Smith, Charles Wilson.



President G. L. Harrison presenting award to Marquess Haynes

Baseball



Track



Campus Scenes



Compliments of

KENNARD'S RED BUD FOOD CENTER

1640 N. Bryan

Oklahoma City

PEYTON GLASS & SON

Quality Apparel

for more than 30 years

Stillwater



KATZ

DEPARTMENT STORE

Stillwater's

Oldest and Greatest Store

We give "G. & H." Green Stamps

Campus Scenes

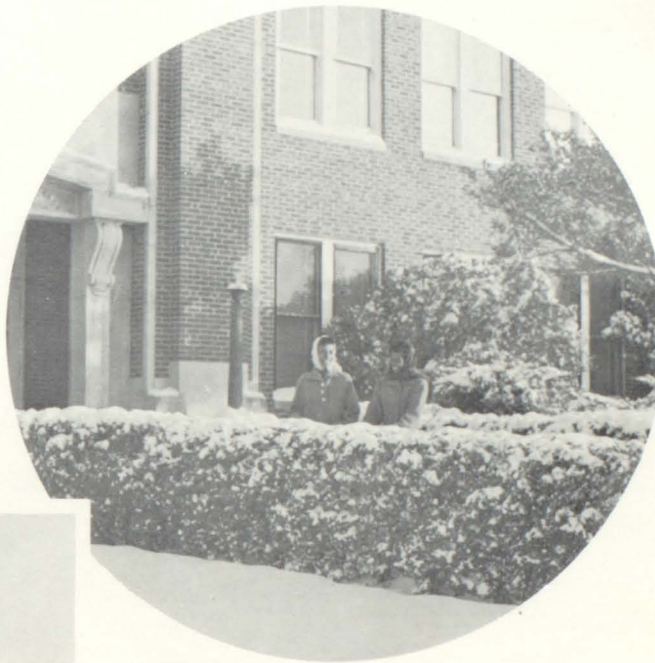
Anytime Treat!

FAIRMONT

Ice Cream

Milk

Cottage Cheese



G & T CLEANERS

Cleaning — Repairing — Alterations
We Clean on Time — Rain or Shine

Pho. HO 6-2511

Langston, Oklahoma



CONGRATULATIONS

Seniors

**OKLAHOMA NATURAL GAS
COMPANY**



Campus Scenes

Congratulations

From

FURROW AND COMPANY
Flowers For Every Occasion

Phone BU 2-2730

Guthrie, Okla.

McCORMICK'S

CAFE & SERVICE STATION

Mr. & Mrs. T. R. McCormick
Owners

P. O. Box 595

Boley 2, Okla.



AUSTIN CHEVROLET CO.

101-103 E. Harrison Avenue

Phone BUtler 2-0181



GUTHRIE, OKLAHOMA

Sales & Service

Sincere Congratulations

To The

FACULTY AND STUDENT BODY

From

Mr. & Mrs. Dean May

DEAN'S CLEANING

Guthrie, Oklahoma



Campus Scenes

Shop Safeway and Save

We give Gunn Brothers Stamps

SAFeway STORE

Guthrie, Oklahoma

Dave Flowers Manager

C. J. NELSON MOTOR COMPANY

Featuring Oldsmobile

Dynamic 88—

Nations Largest Seller in 1958

Dependable Service and Parts



HARLEY THOMAS

601 Main

FR 2-7144

Stillwater, Oklahoma

Your Friendly Ford Dealer in Stillwater

FIRST STATE BANK

Friendly Banking

Service Since 1902

Guthrie, Oklahoma

Campus Scenes

THE FIRST NATIONAL BANK

Guthrie

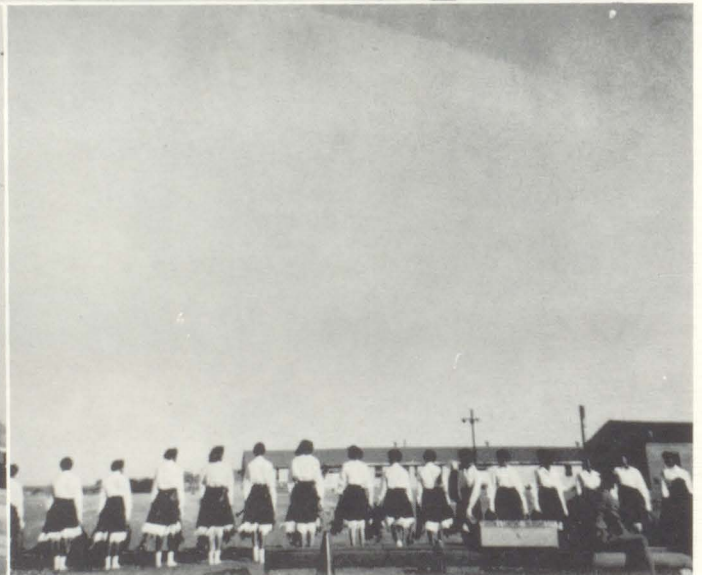
OLDEST IN OKLAHOMA

HAYNES SUNDRY

L. A. Haynes

COYLE, OKLAHOMA

HO 6-2274



ED'S



SERVICE

LUBRICATION — ROAD SERVICE

Batteries — Auto Parts — Tires

Brake Service

Wholesale — Retail — Jobber

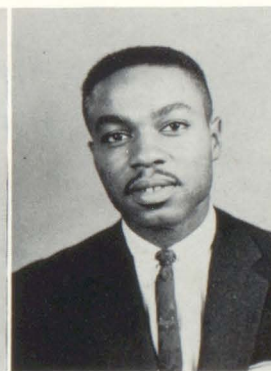
Coyle, Oklahoma

ED LESTER OWNER

LONGA'S CORNER GROCER



Coyle, Oklahoma



Lion Staff

Herman McKinney Editor
 James Abram Associate Editor
 Harold Washington Senior Editor
 Opal Combs Class Editor
 Lafayette McKinney Business Manager
 Weldon Miles Advertising Manager
 Cassell Lawson Circulating Manager
 Rose Varner Secretary
 Almeda C. Parker Faculty Advisor
 Carl Jones Co-Sponsor

Langston University Song

DEAR LANGSTON

High on a throne with royal mien,
Our Hope and our Mother stand;
All gaze with pride upon the scene
High o'er the Silv'ry Strand;
All gaze with pride upon the scene
Where our Hope and our Mother stand.

If ever man should dare bring low
Thy blazed banner high,
We'll battle with the vicious foe
And for thy honor die.
We'll strive to overcome the foe
Or for thy honor die.

CHORUS

Dear Langston, dear Langston
Thy sons and daughters brave
Will strive on with courage
Their honored shrine to save
With a "sis! boom! bah" and a "hip hurrah!"
With a "hip, hur—rah!"
We rally to Langston, dear Langston to Thee

The Lion

1959

Index

| | Page |
|-------------------------------------|------|
| Administration | 9 |
| Advertising | 110 |
| Athletics | 105 |
| Classes | 29 |
| Faculty | 16 |
| History—Langston University | 2 |
| Message, Editor's | 8 |
| Oklahoma, Governor, State of | 4 |
| Regents, for Higher Education | 5 |
| Regents, for A & M Colleges | 6 |

